

UPPER EAST SIDE
UNIONVILLE

GROVES (MOD)

ELEV B • 2958 SQ. FT.
ELEV C • 2976 SQ. FT.



38'

FIELDGATEHOMES.COM



FIELDGATEHOMES.COM

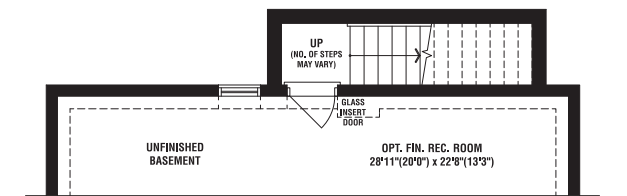
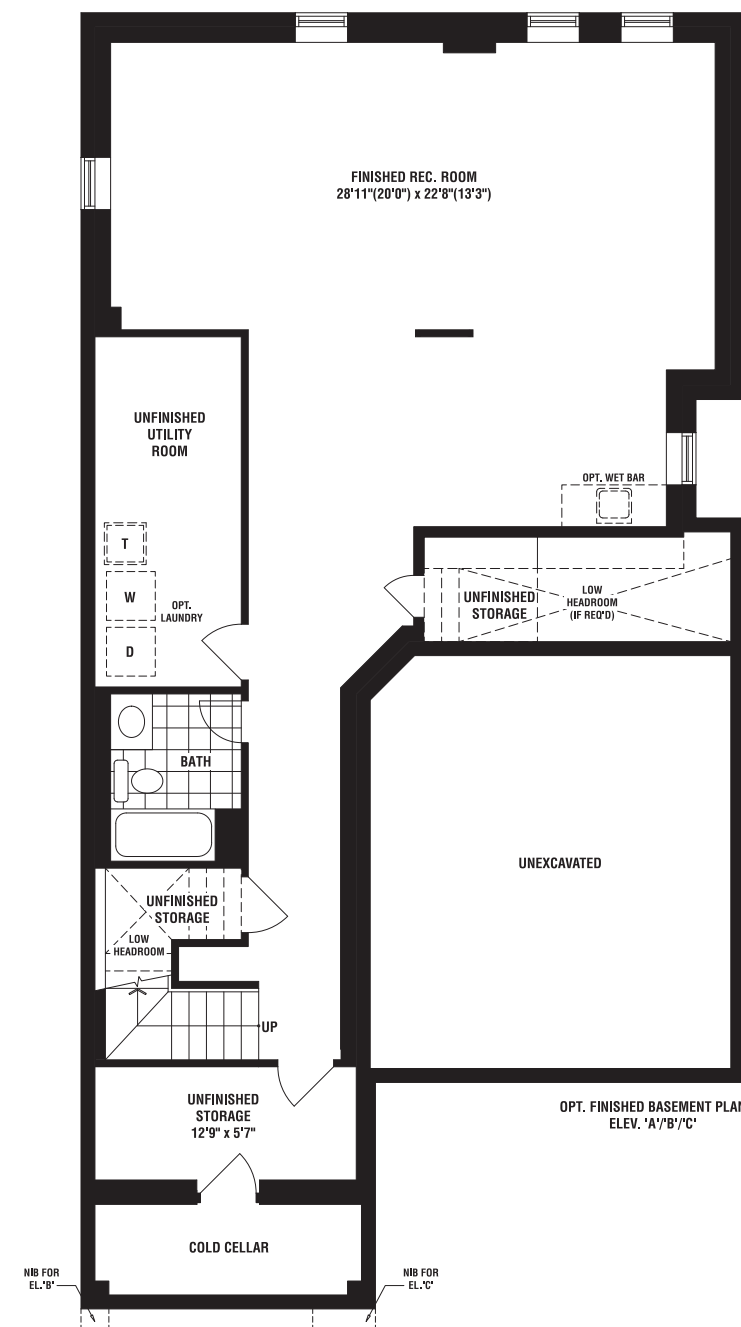
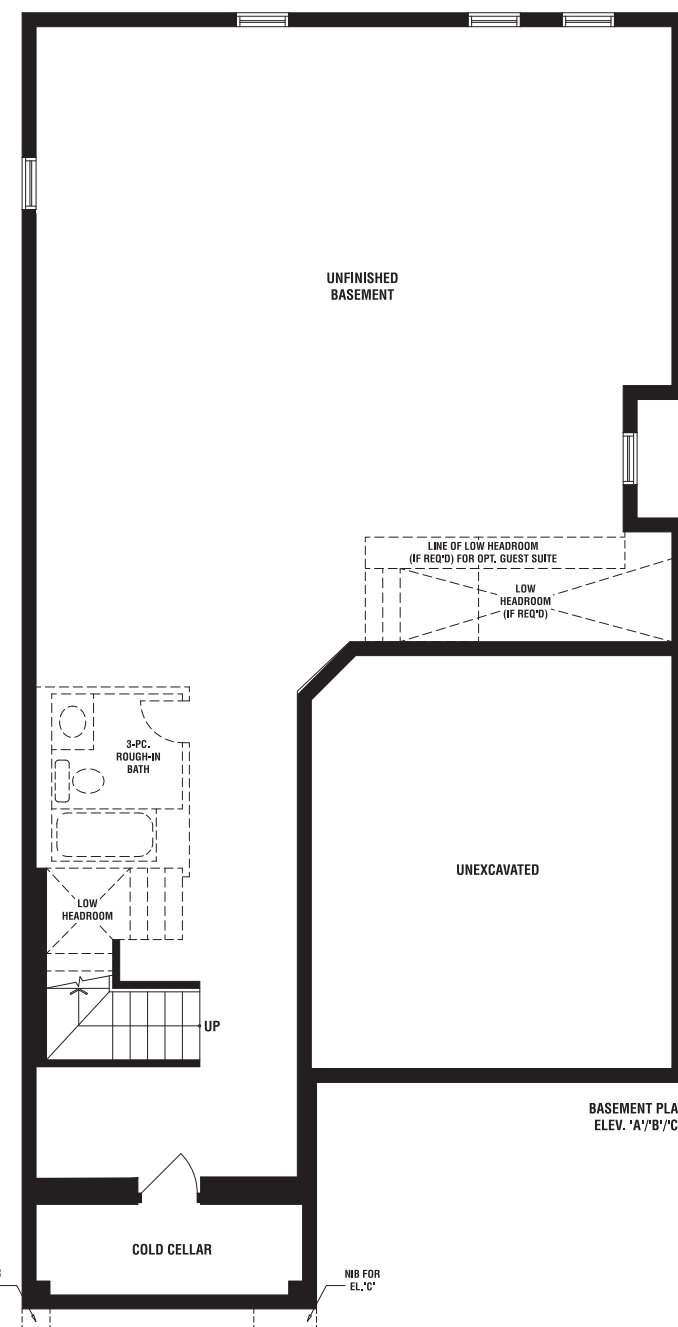
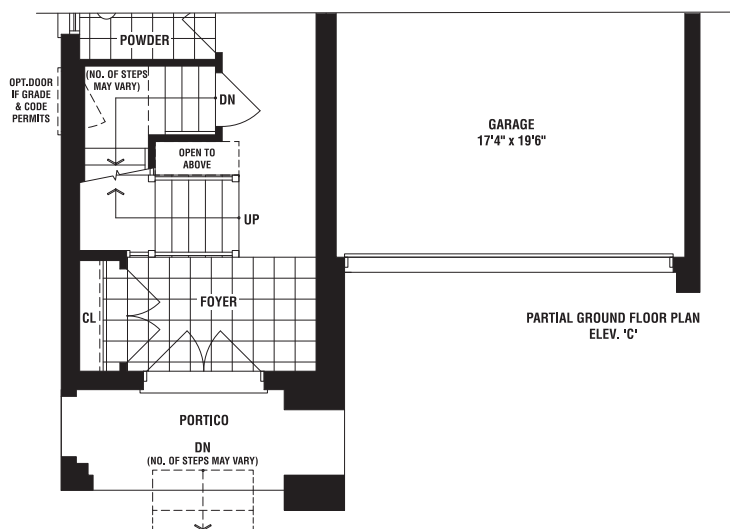
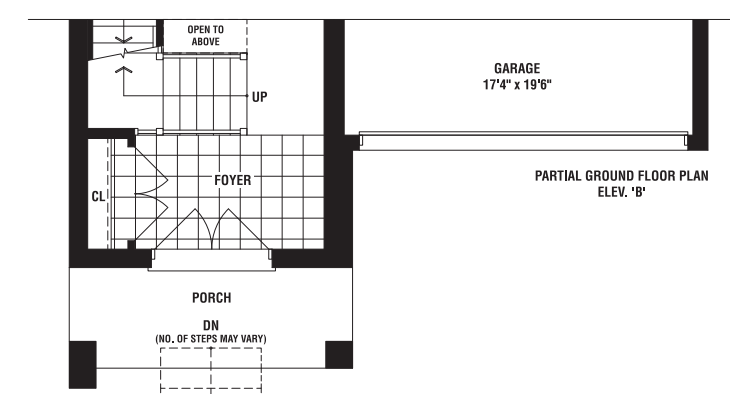
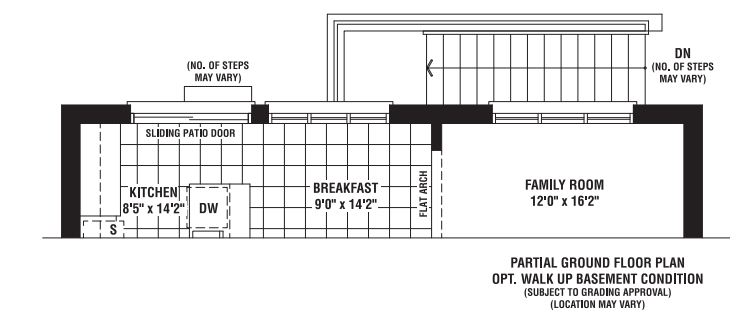
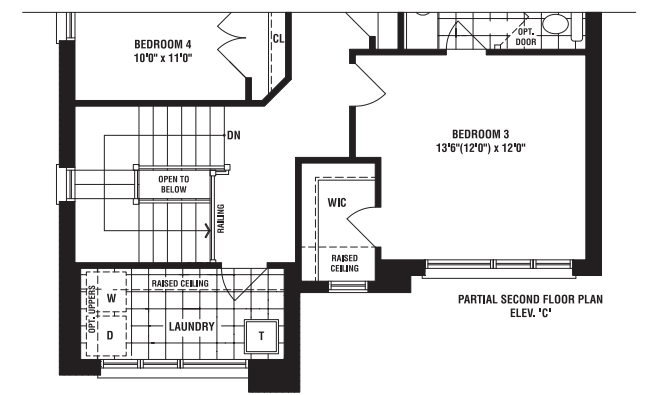
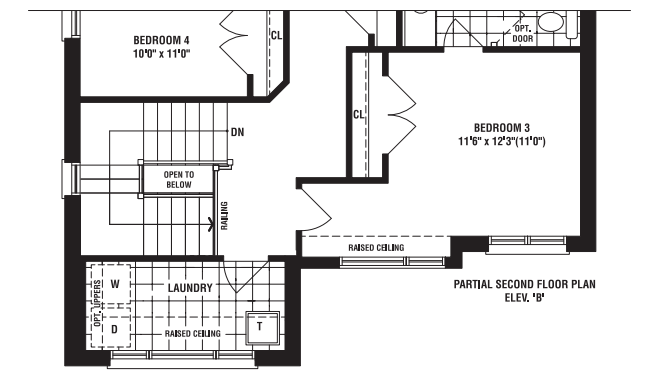
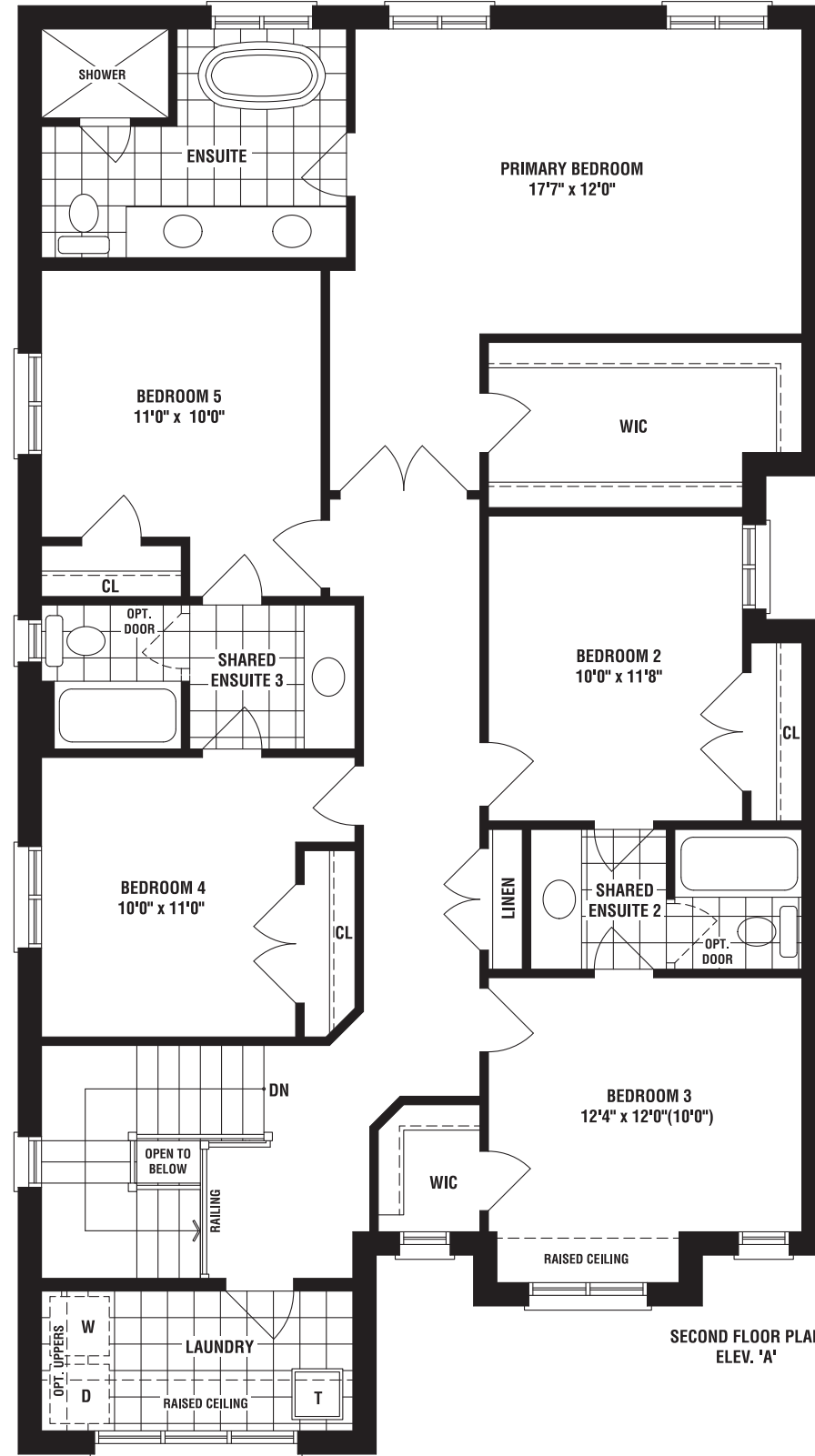
UPPER EAST SIDE
UNIONVILLE

GROVES (MOD)

ELEV A • 2949 SQ. FT.



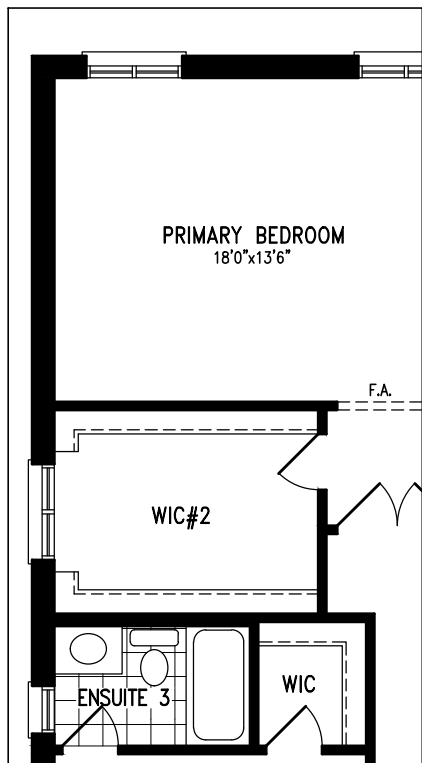
38'



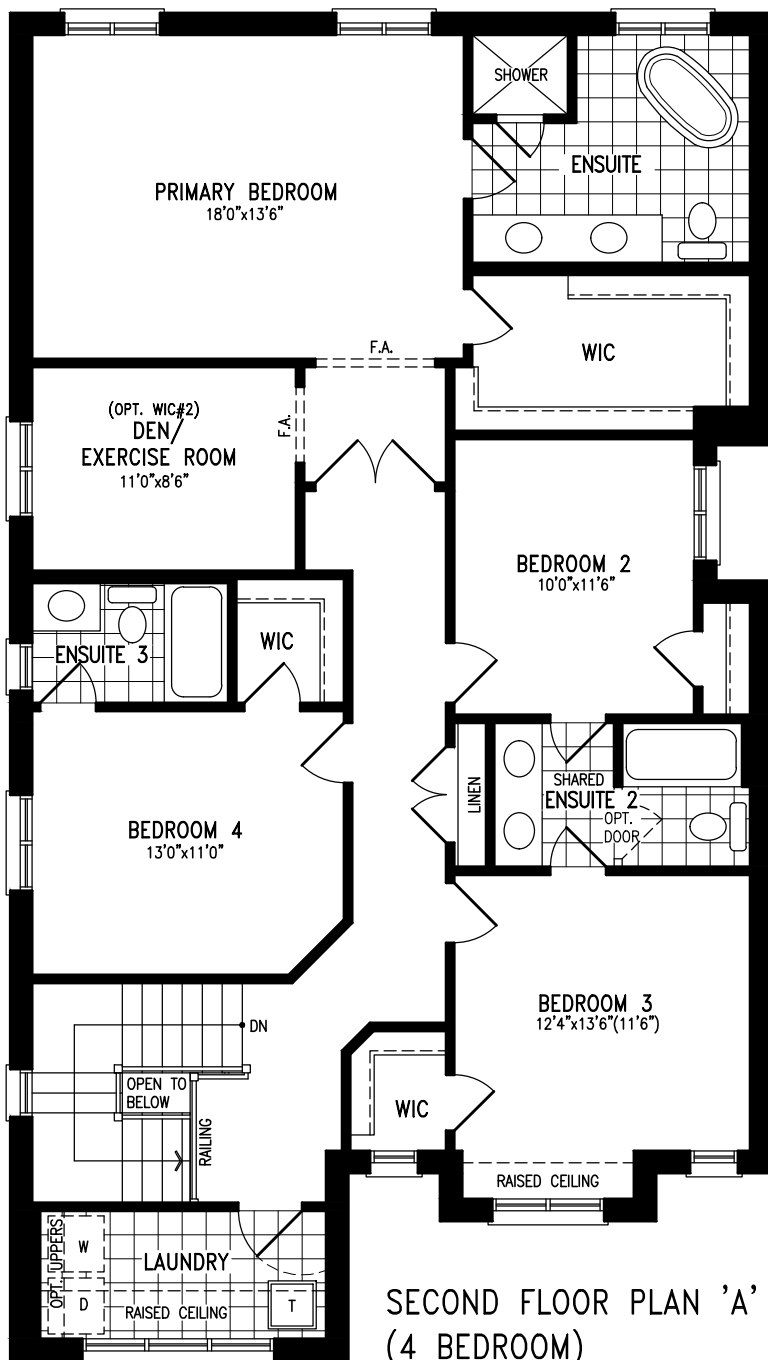
SECOND FLOOR PLAN

A38-5 MOD. 'GROVES'

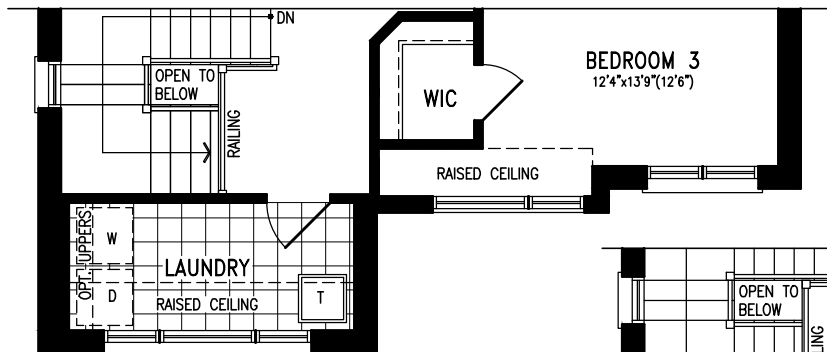
2949 s.f. 'A'
 2958 s.f. 'B'
 2976 s.f. 'C'



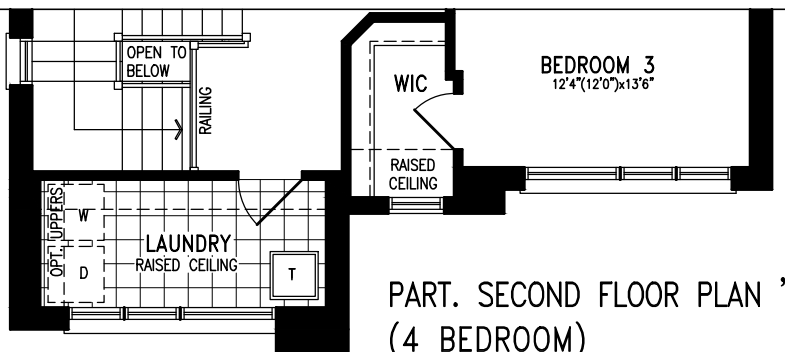
OPT. PART. SECOND FLOOR PLAN 'A' - 4 BEDROOM + 3 BATH PLAN (WITH OPTIONAL WIC#2)



SECOND FLOOR PLAN 'A' (4 BEDROOM)



PART. SECOND FLOOR PLAN 'B' (4 BEDROOM)



PART. SECOND FLOOR PLAN 'C' (4 BEDROOM)

The floorplans and elevations shown, dimensions, specifications and architectural detailing are pre-construction plans and may be revised or improved as necessitated by architectural controls and the construction process. All dimensions are approximate. Purchaser agrees to accept same. Specifications subject to change without notice. Stairs may vary at any exterior entrance. Illustrations are Artist's concept. Exterior railings on plans only as required by grade. E. & O.E. May 2008.

All changes on diagrams should correspond with items in the schedule.

A38-5 MOD

PROJECT:	18015	SQ.FT.:	SQ.FT.
LOT NO.:	-		
MODEL TYPE:	A38-5 MOD.		
ELEVATION:	'A', 'B', AND 'C'		
PURCHASER:		DATE:	

UPPER EAST SIDE
UNIONVILLE

GROVES

ELEV B • 2990 SQ. FT.

ELEV C • 3008 SQ. FT.



38'

FIELDGATEHOMES.COM



FIELDGATEHOMES.COM

UPPER EAST SIDE
UNIONVILLE

GROVES

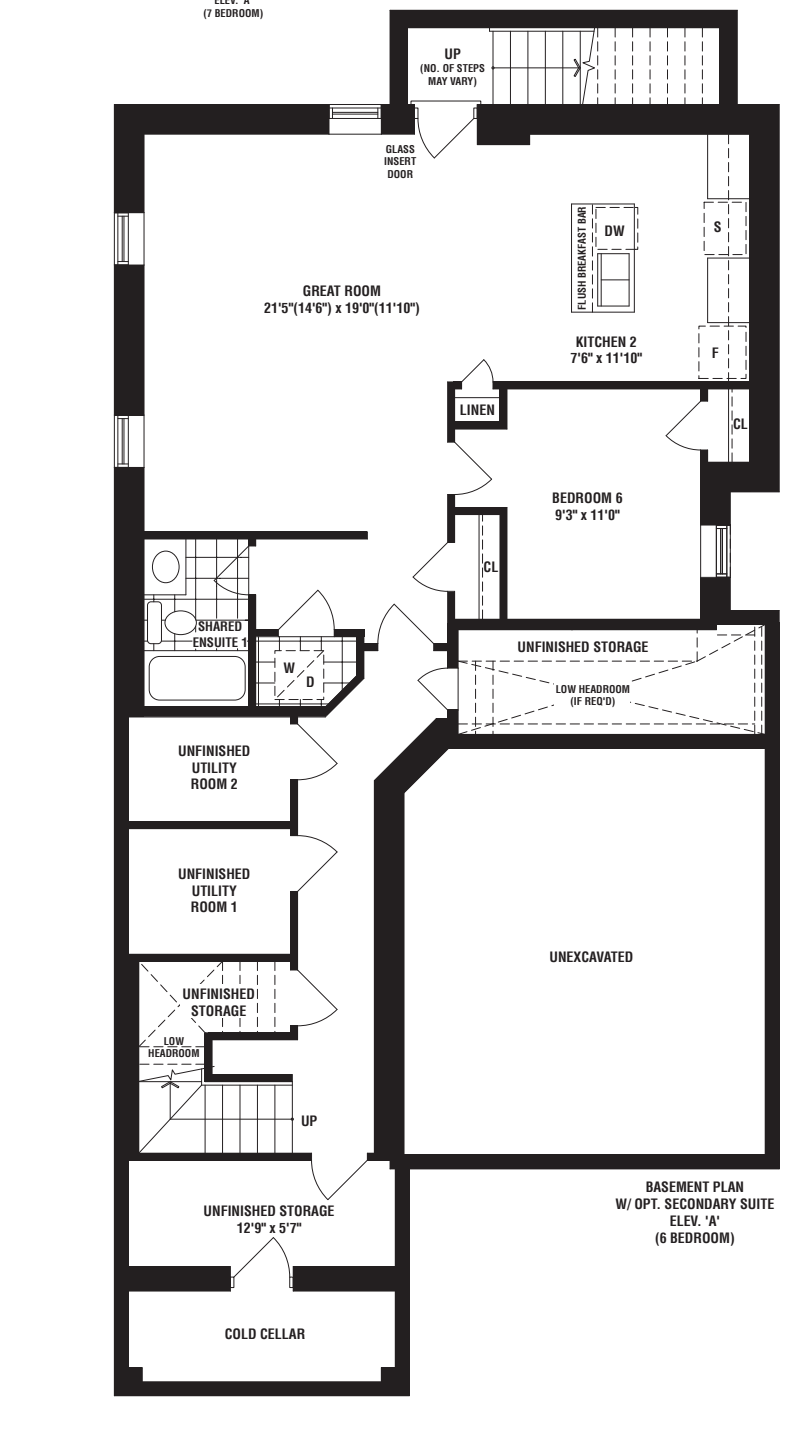
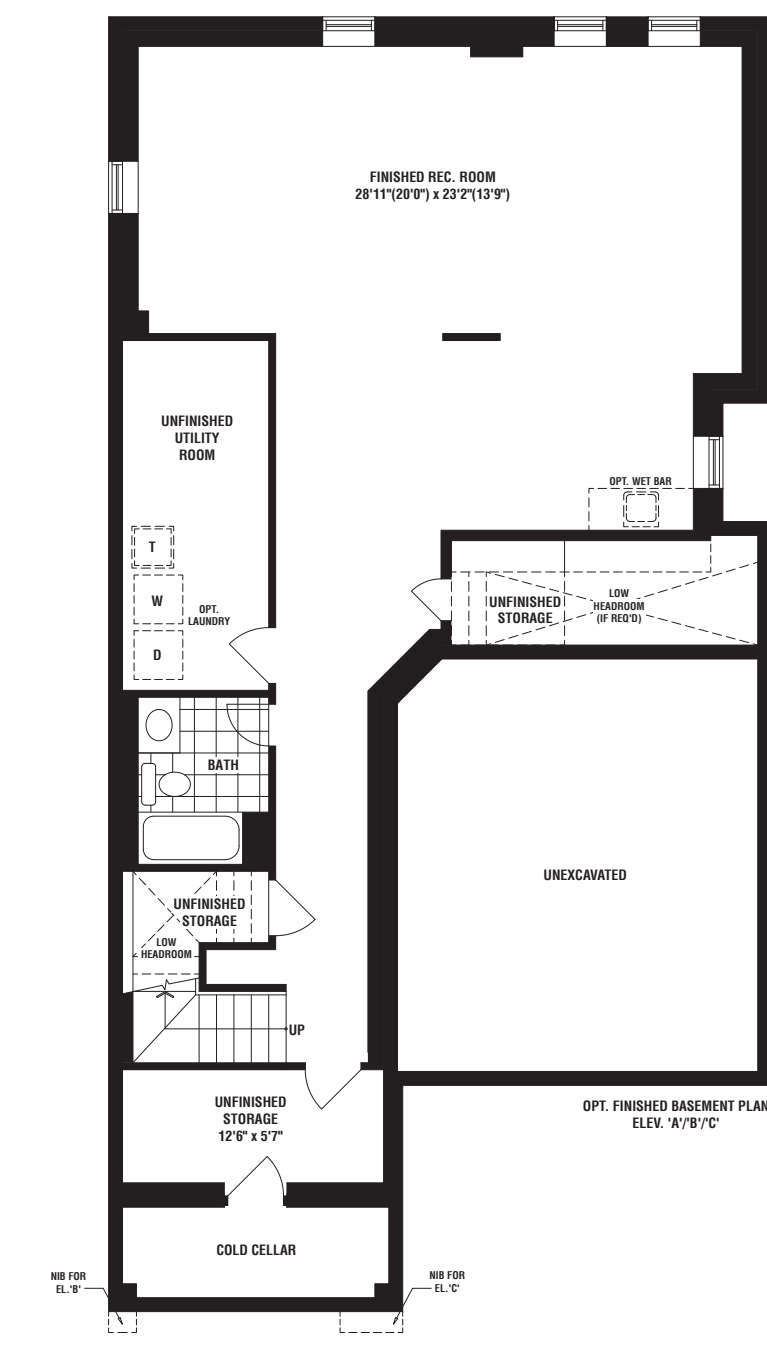
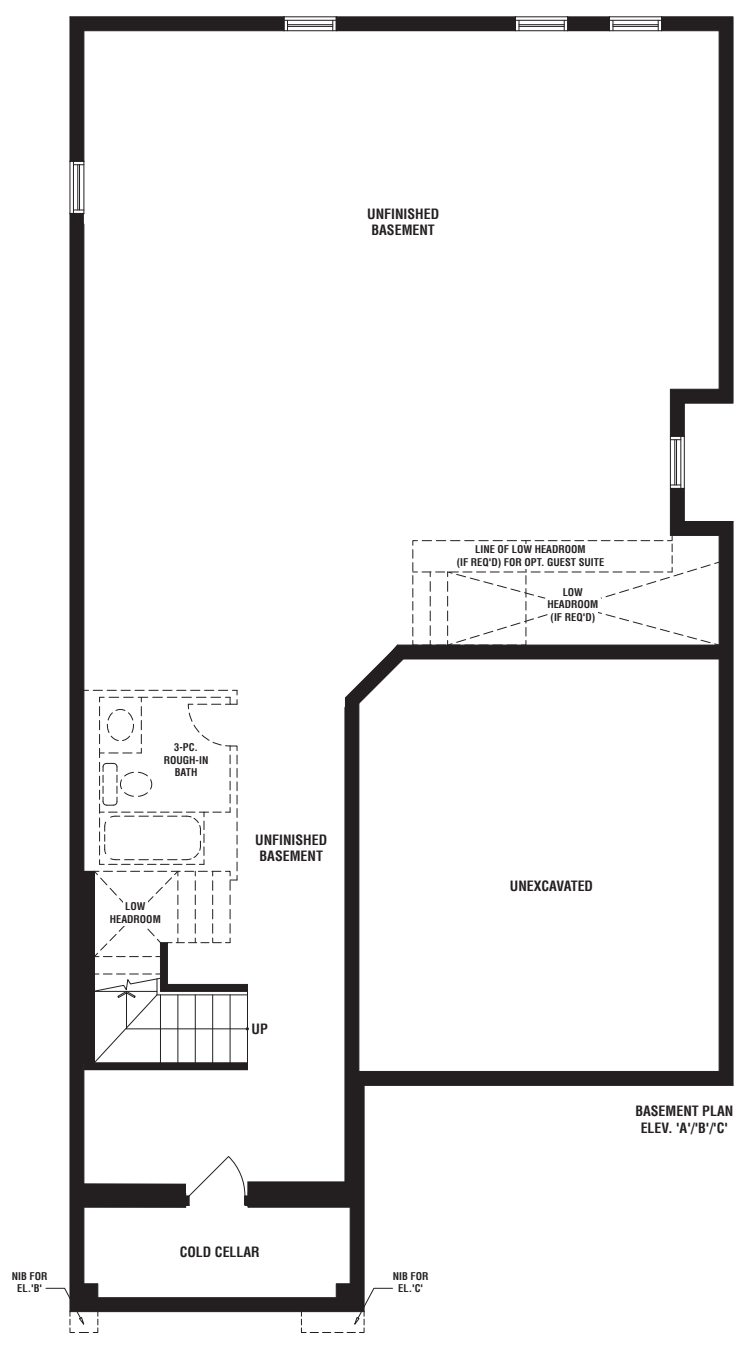
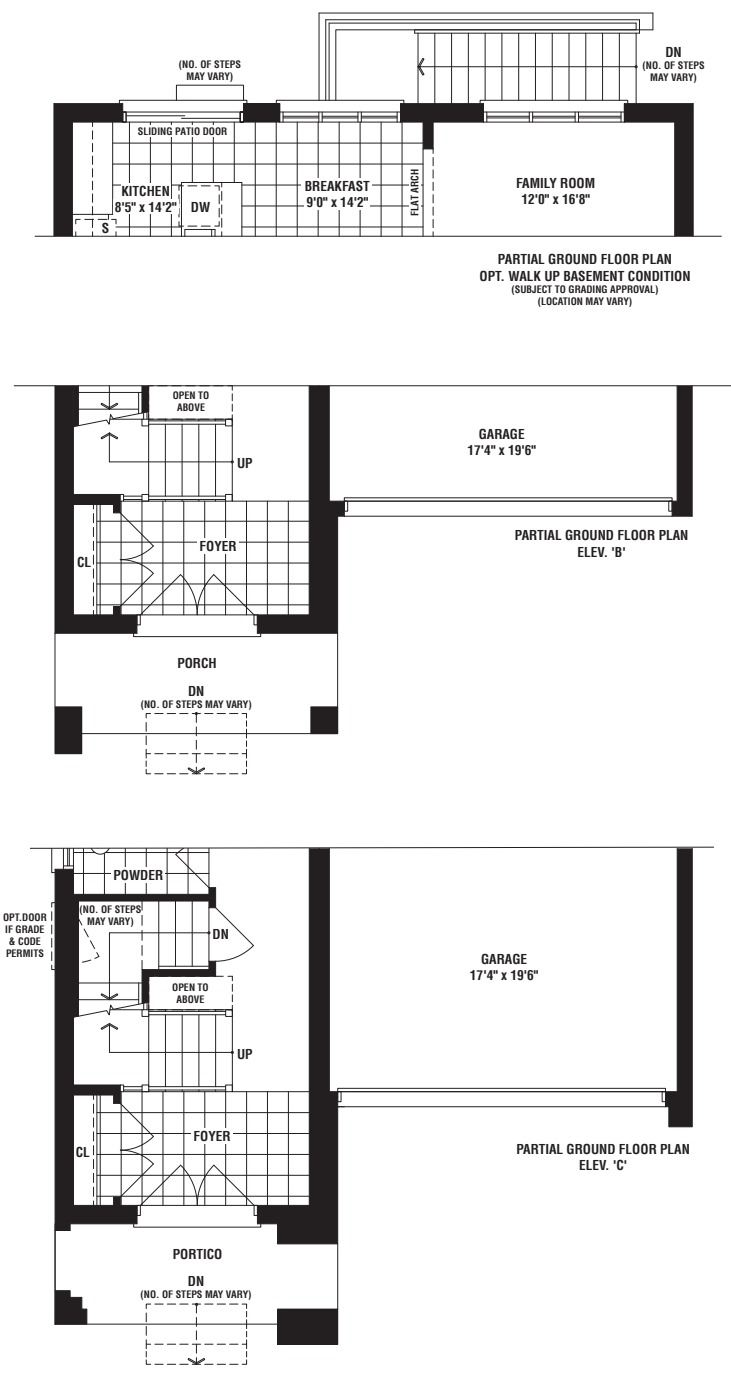
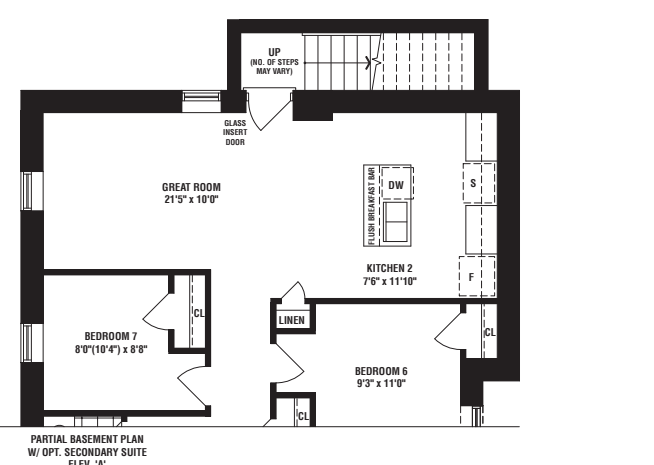
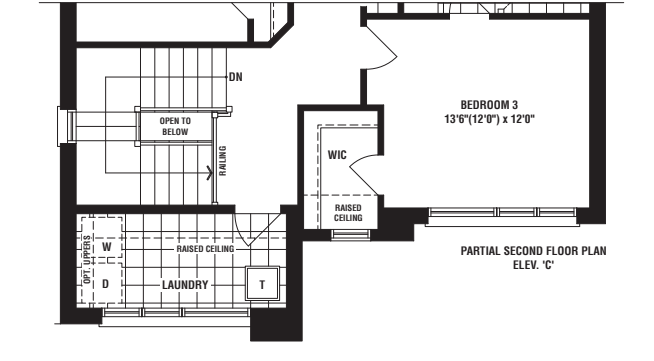
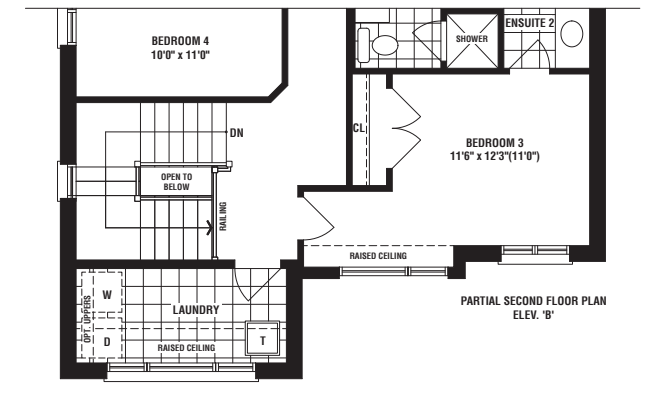
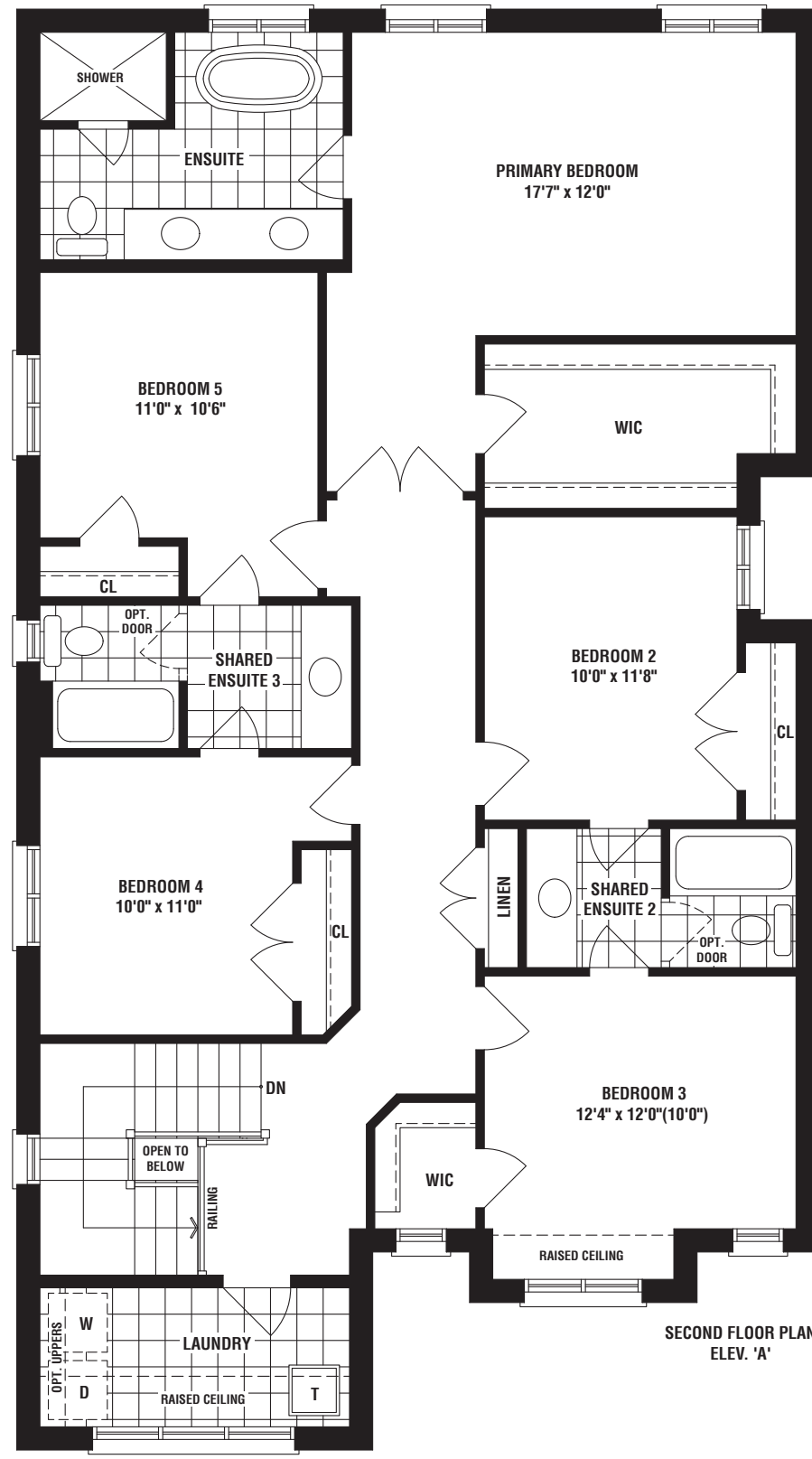
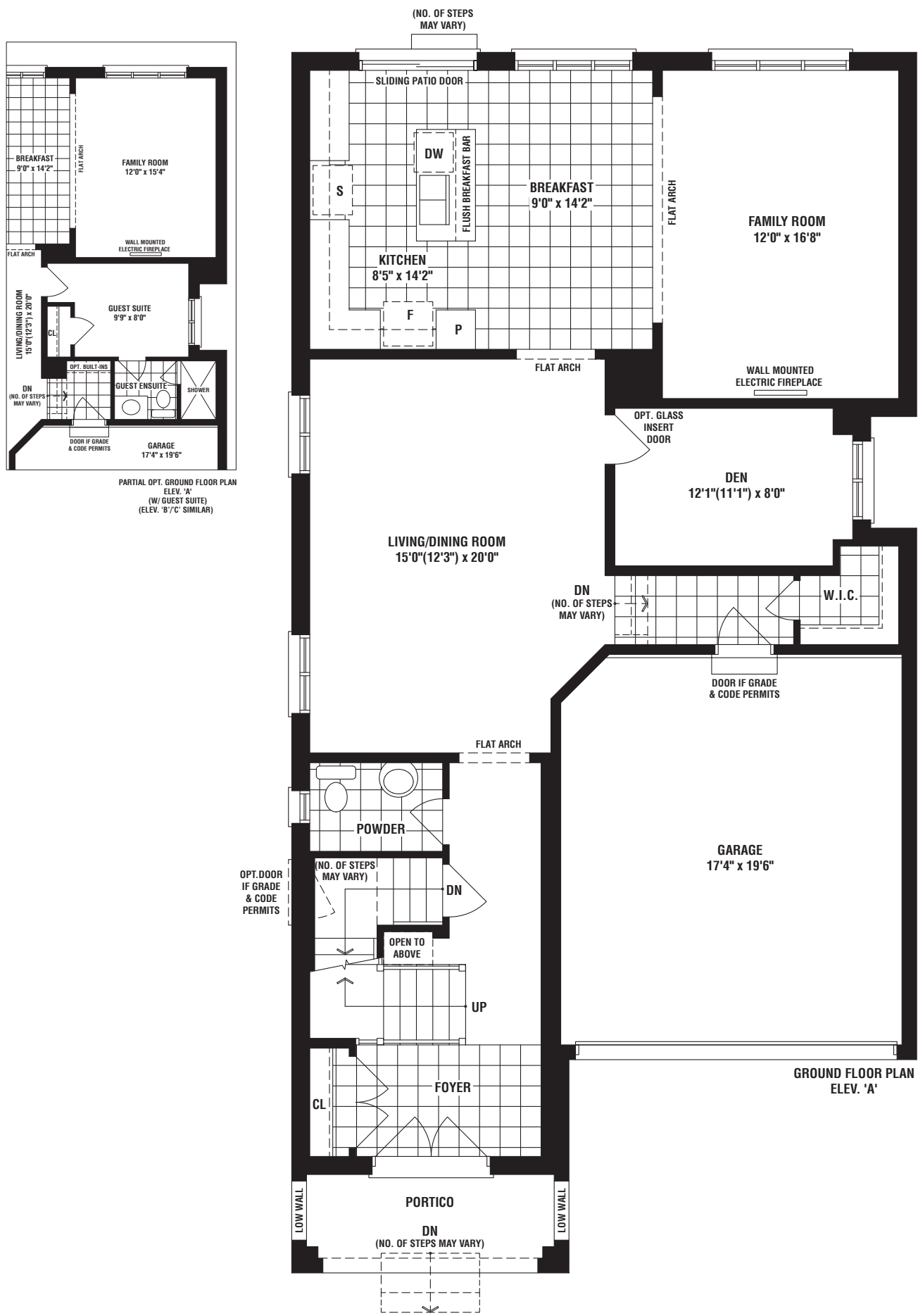
ELEV A • 2981 SQ. FT.



38'

ELEV A • 2981 SQ. FT. | ELEV B • 2990 SQ. FT. | ELEV C • 3008 SQ. FT.
 (NOT INCLUDING 912 SQ. FT. FINISHED BASEMENT)

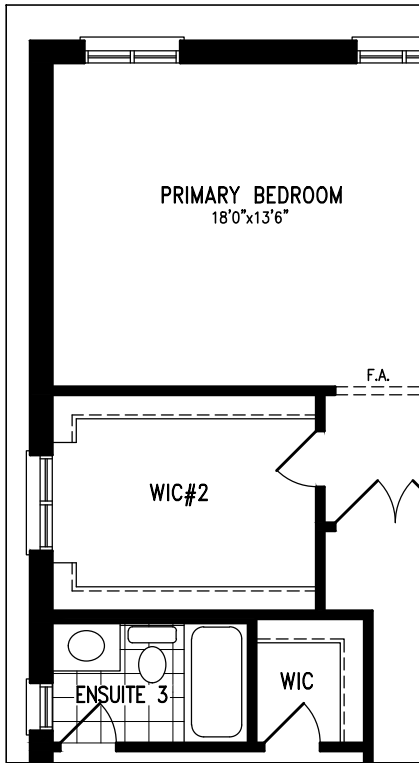
WITH SECONDARY SUITE AND FINISHED BASEMENT SPACE
 ELEV A • 3979 SQ. FT. | ELEV B • 3988 SQ. FT. | ELEV C • 4006 SQ. FT.



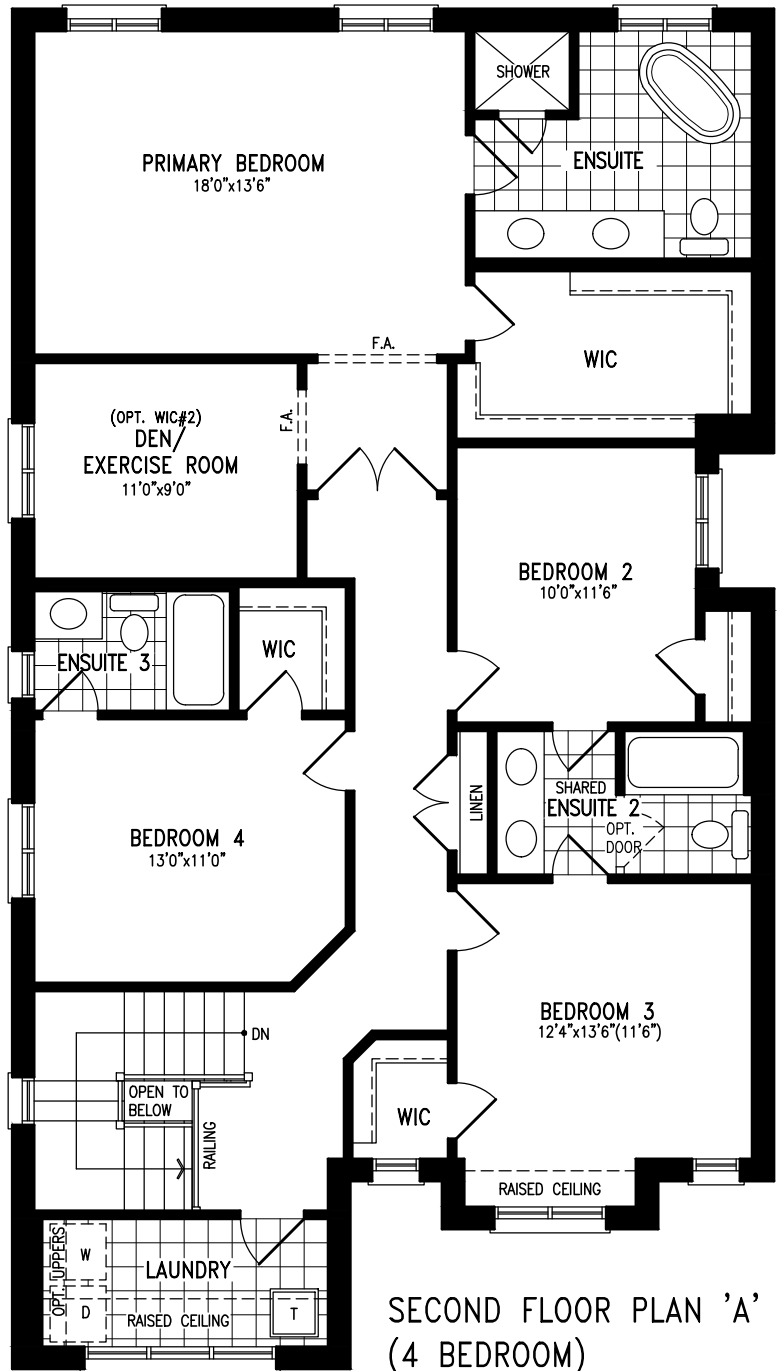
SECOND FLOOR PLAN

A38-5 'GROVES'

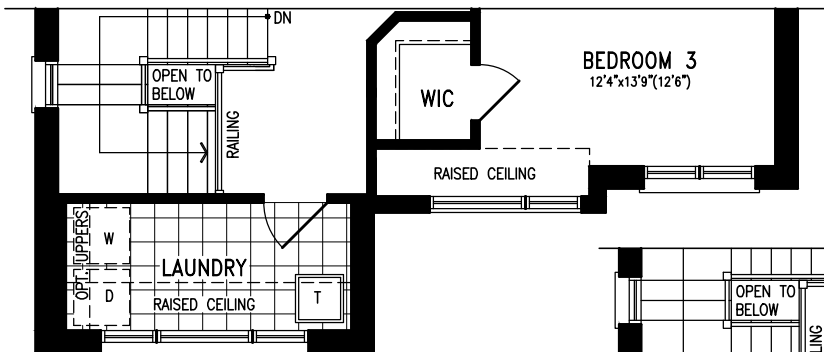
2981 s.f. 'A'
 2990 s.f. 'B'
 3008 s.f. 'C'



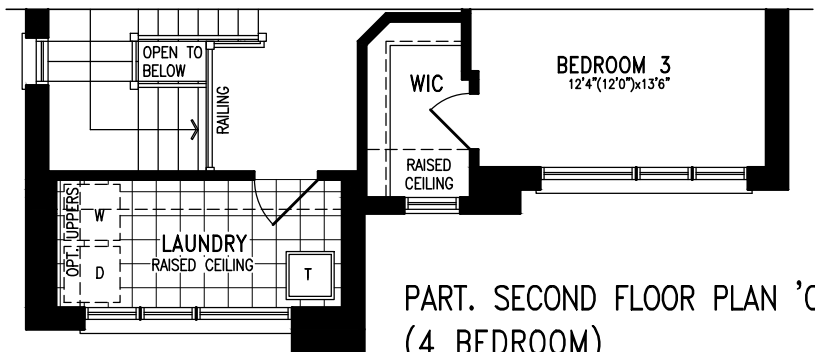
OPT. PART. SECOND FLOOR PLAN 'A' - 4 BEDROOM + 3 BATH PLAN (WITH OPTIONAL WIC#2)



SECOND FLOOR PLAN 'A' (4 BEDROOM)



PART. SECOND FLOOR PLAN 'B' (4 BEDROOM)



PART. SECOND FLOOR PLAN 'C' (4 BEDROOM)

The floorplans and elevations shown, dimensions, specifications and architectural detailing are pre-construction plans and may be revised or improved as necessitated by architectural controls and the construction process. All dimensions are approximate. Purchaser agrees to accept same. Specifications subject to change without notice. Steps may vary at any exterior entrance. Illustrations are Artist's concept. Exterior railings on plans only as required by grade. E. & O.E. May 2008.

All changes on diagrams should correspond with items in the schedule.

A38-5

PROJECT:	18015	SQ.FT.:	SQ.FT.
LOT NO.:	-		
MODEL TYPE:	A38-5		
ELEVATION:	'A', 'B', AND 'C'		
PURCHASER:		DATE:	

UPPER EAST SIDE
UNIONVILLE

WILDWOOD

ELEV B • 2946 SQ. FT.
ELEV C • 2946 SQ. FT.



38'

FIELDGATEHOMES.COM



FIELDGATEHOMES.COM

UPPER EAST SIDE
UNIONVILLE

WILDWOOD

ELEV A • 2946 SQ. FT.



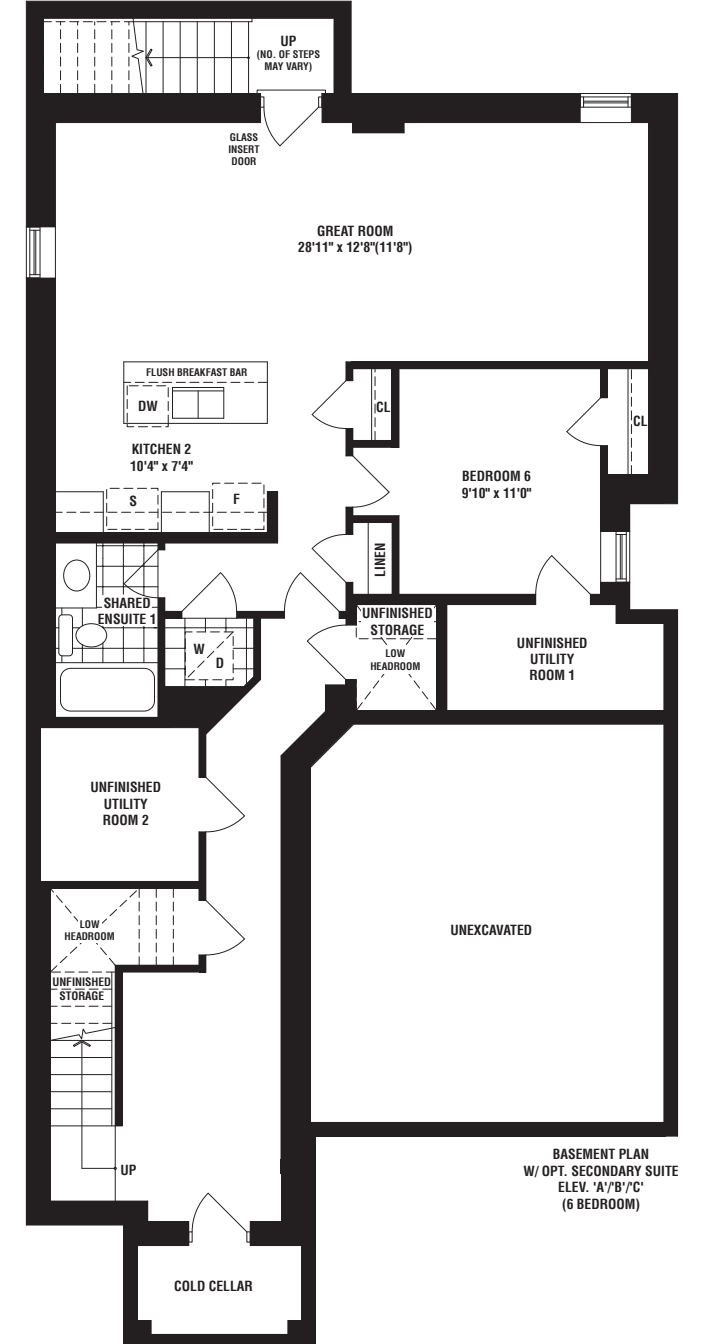
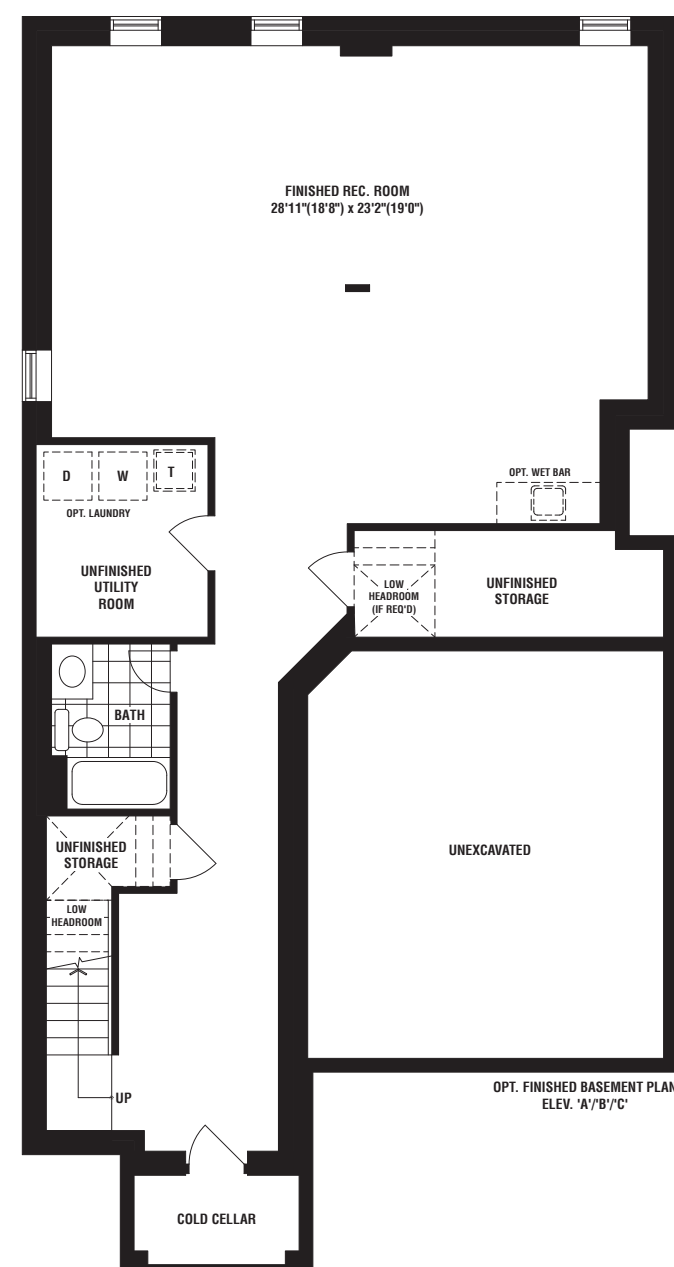
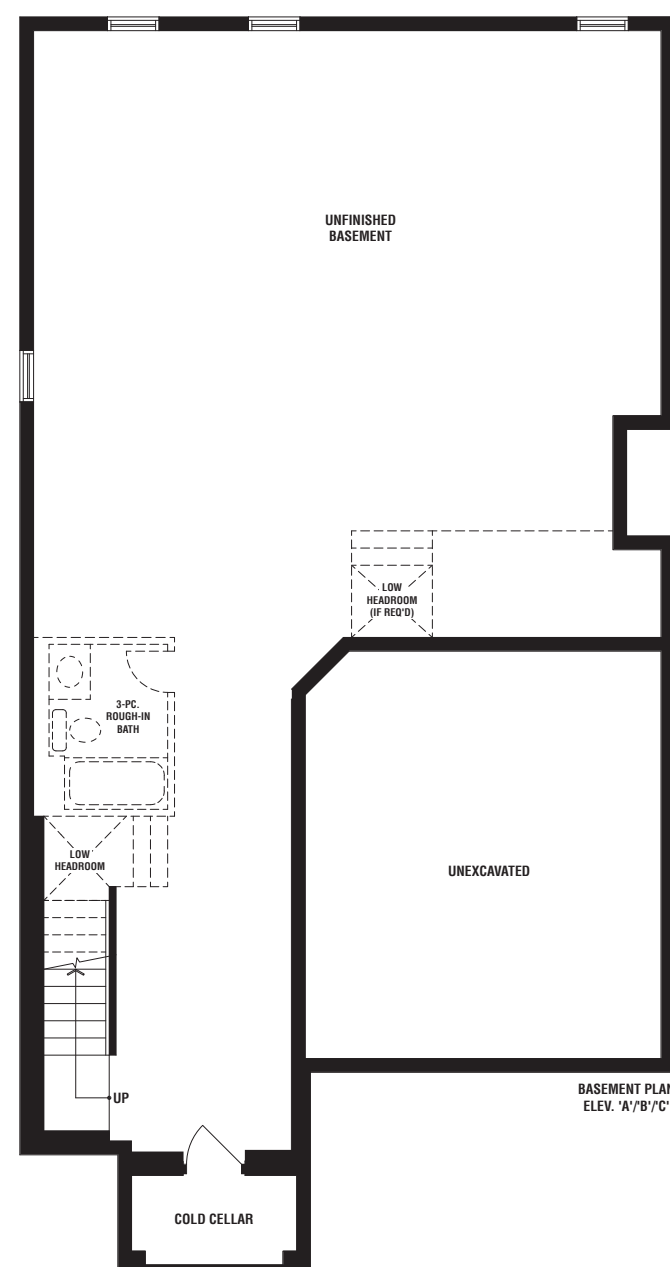
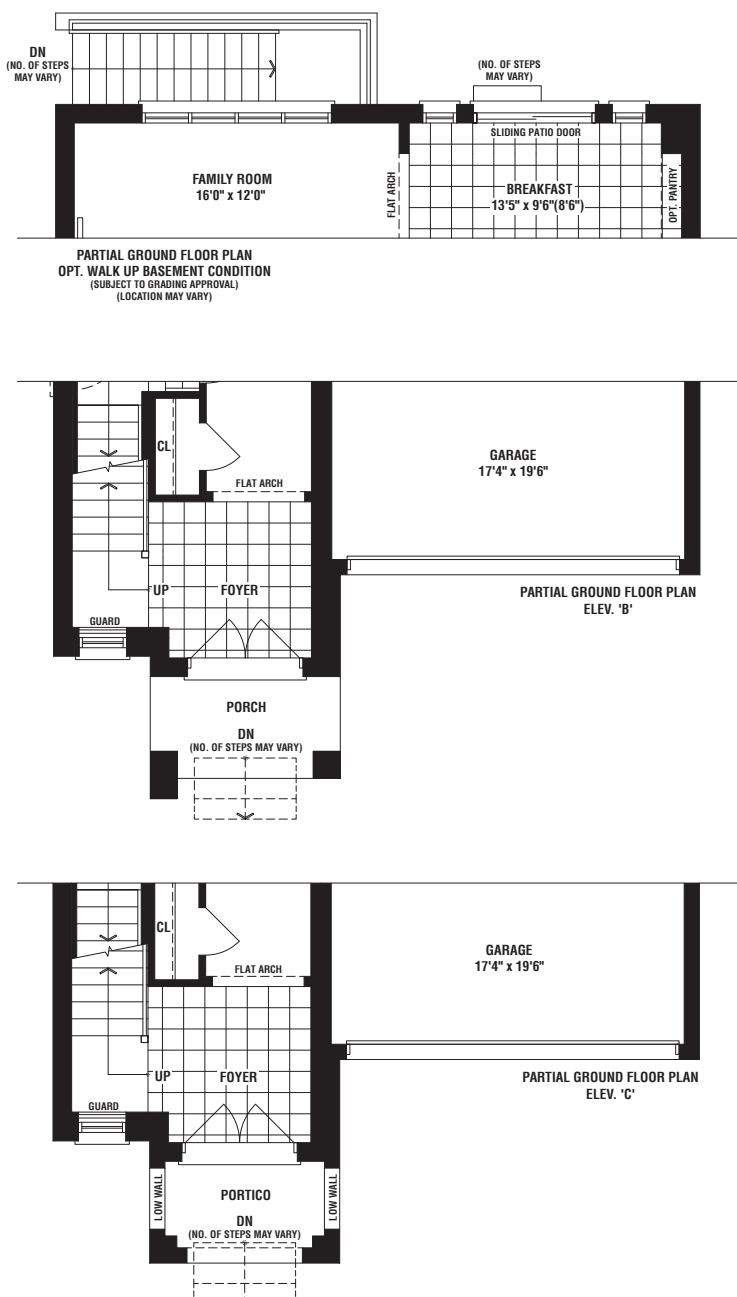
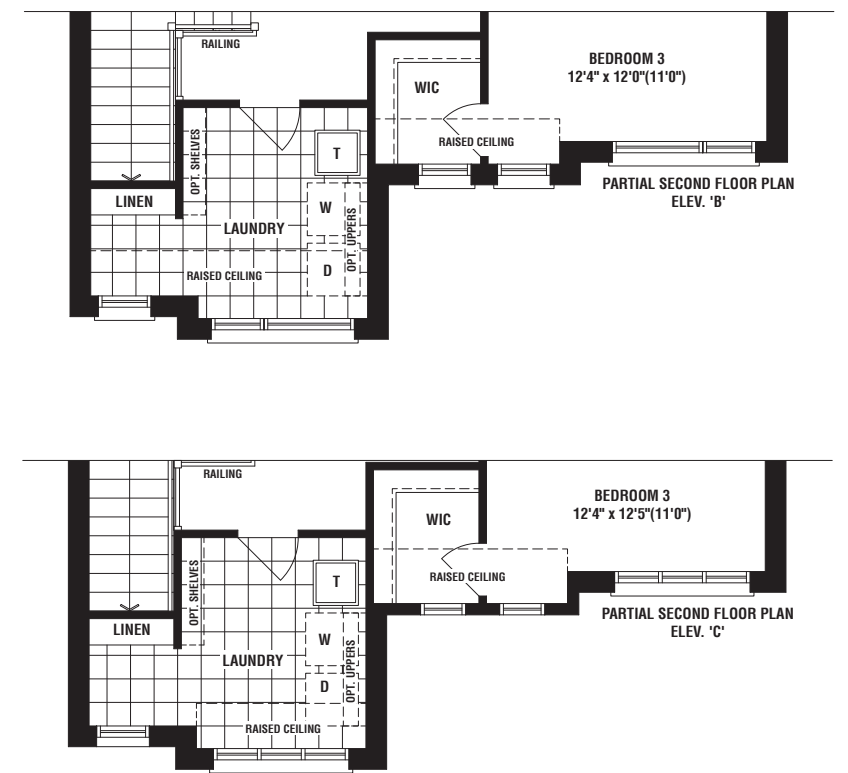
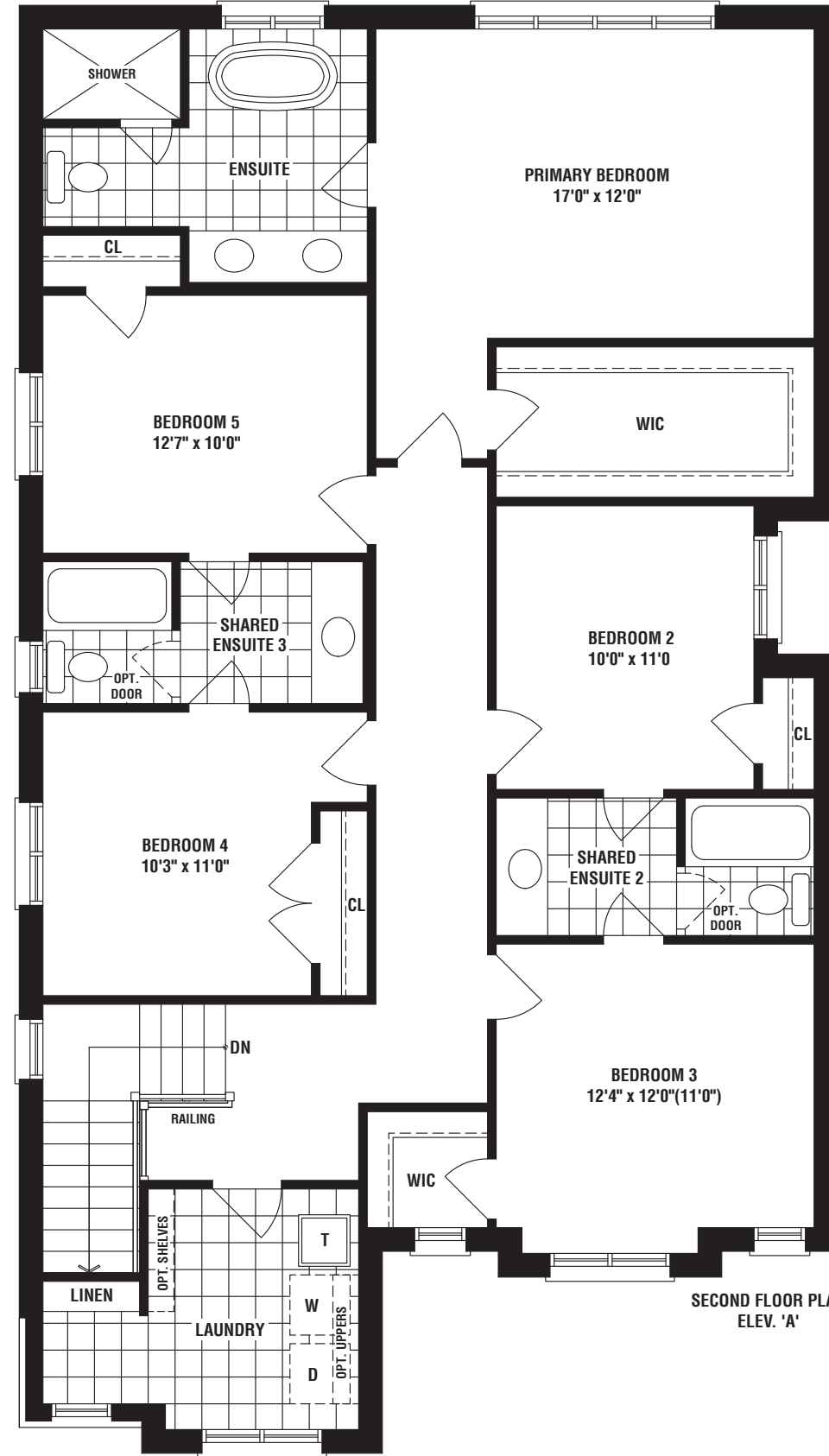
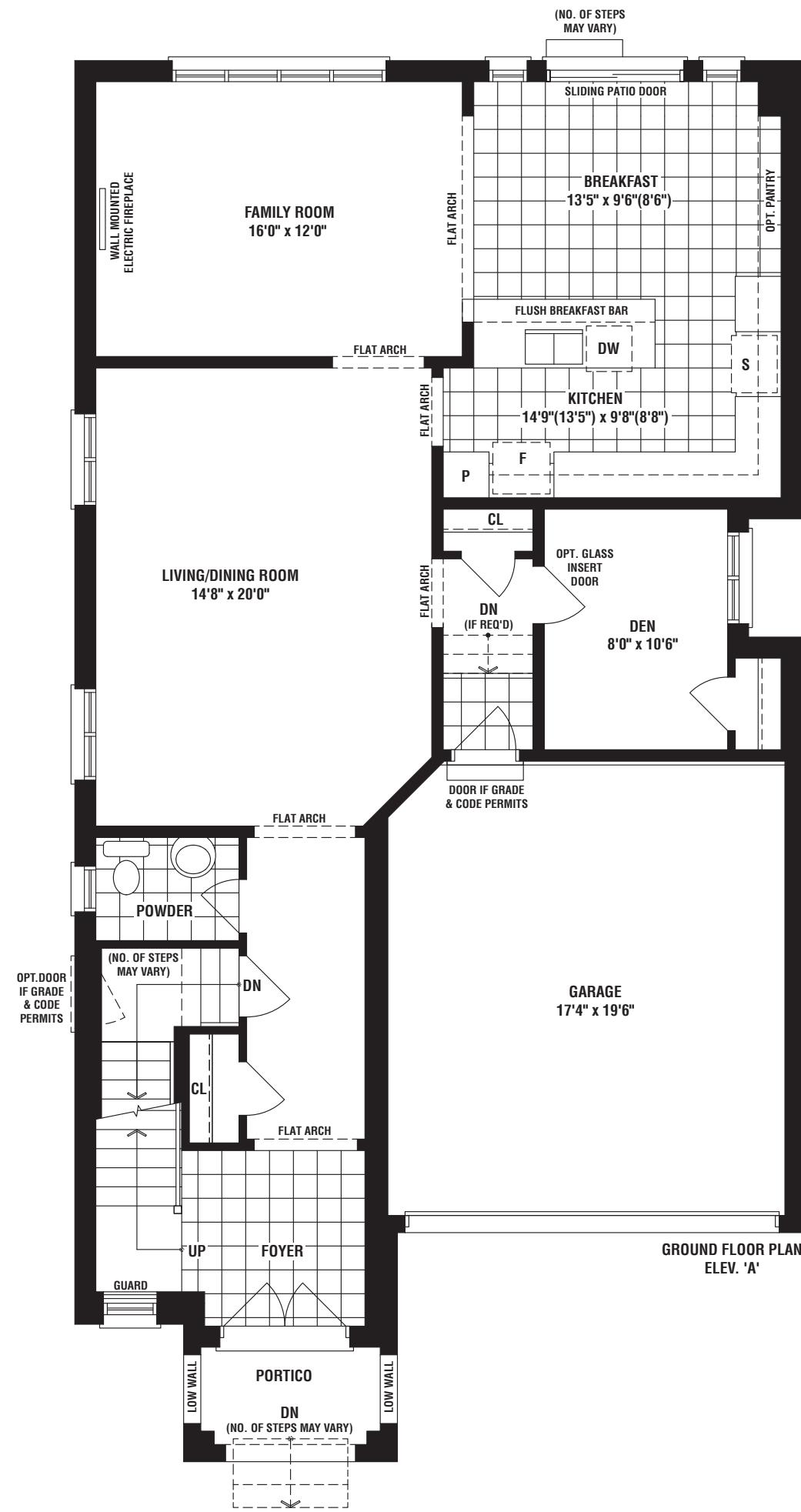
38'

WILDWOOD

38'

ELEV A • 2946 SQ. FT. | ELEV B • 2946 SQ. FT. | ELEV C • 2946 SQ. FT.
(NOT INCLUDING 1007 SQ.FT. FINISHED BASEMENT)

WITH SECONDARY SUITE AND FINISHED BASEMENT SPACE
ELEV A • 4028 SQ. FT. | ELEV B • 4028 SQ. FT. | ELEV C • 4028 SQ. FT.

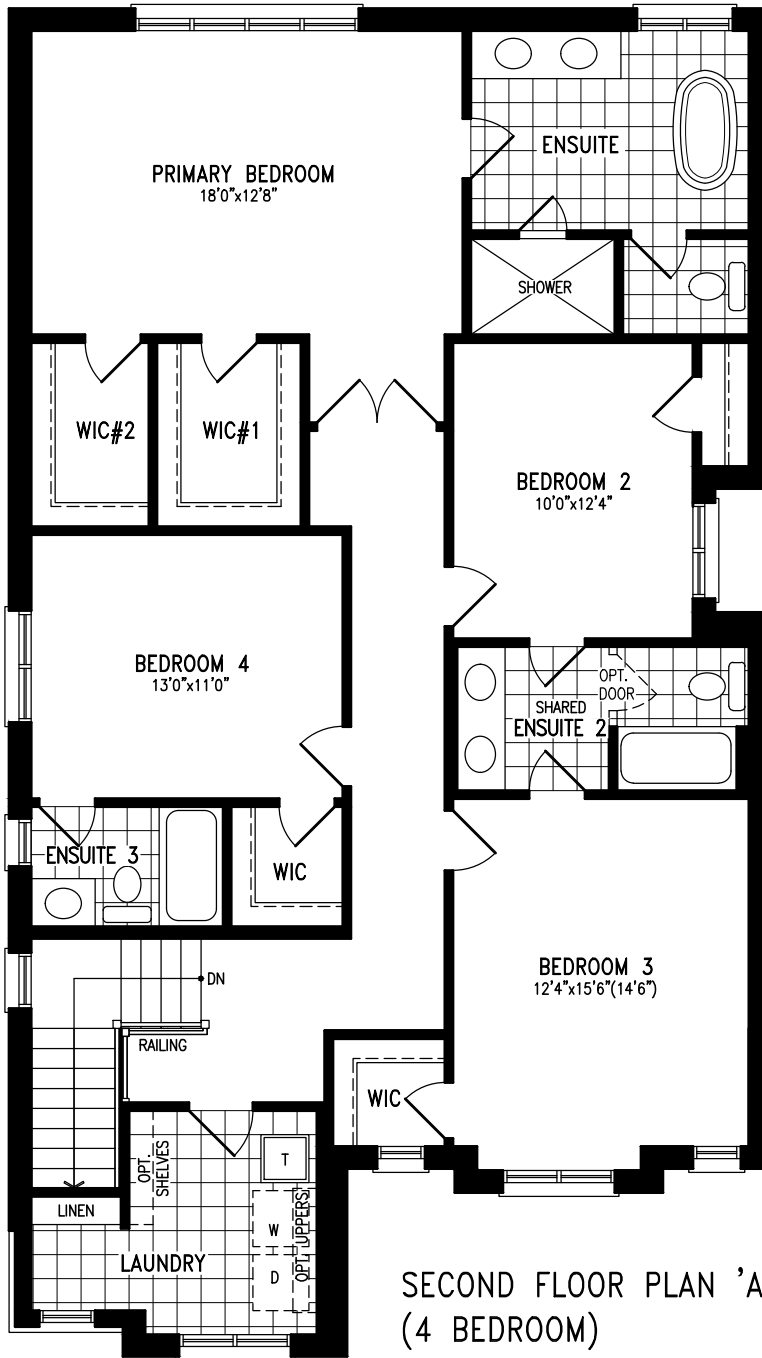


The floorplans and elevations shown, dimensions, specifications and architectural detailing are pre-construction plans and may be revised or improved as necessitated by architectural controls and the construction process. All dimensions are approximate. Actual usable floor space may vary from the stated area. House may be reversed and Purchaser agrees to accept same. Specifications subject to change without notice. Number of steps and location may vary at any exterior entrance including walk-up and walk-out basements. Illustrations are Artist's concept. Exterior railings on plans only as required by grade. E. & O. E. 03/24 A38-4

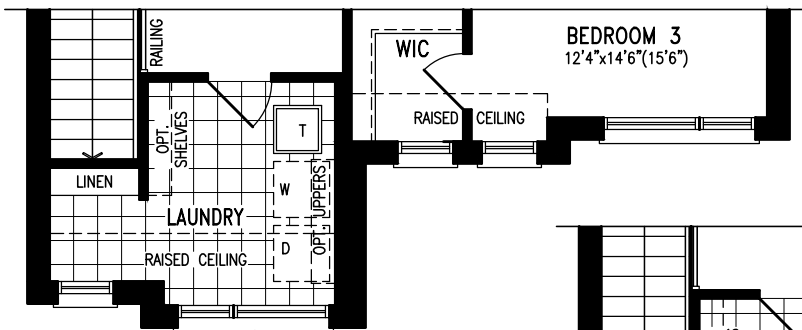
SECOND FLOOR PLAN

A38-4 'WILDWOODS'

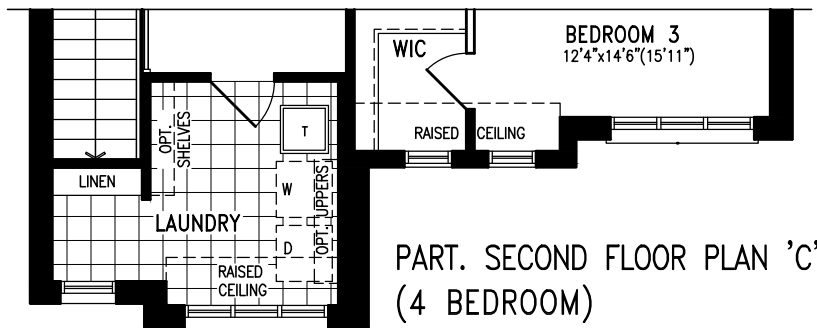
2946 s.f. 'A'
 2946 s.f. 'B'
 2946 s.f. 'C'



SECOND FLOOR PLAN 'A'
(4 BEDROOM)



PART. SECOND FLOOR PLAN 'B'
(4 BEDROOM)



PART. SECOND FLOOR PLAN 'C'
(4 BEDROOM)

The floorplans and elevations shown, dimensions, specifications and architectural detailing are pre-construction plans and may be revised or improved as necessitated by architectural controls and the construction process. All dimensions are approximate. Purchaser agrees to accept same. Specifications subject to change without notice. Steps may vary at any exterior entrance. Illustrations are Artist's concept. Exterior railings on plans only as required by grade. E. & O.E. May 2008.

All changes on diagrams should correspond with items in the schedule.

A38-4

PROJECT:	18015		
LOT NO.:	-		
MODEL TYPE:	A38-4		
ELEVATION:	'A', 'B', AND 'C'	SQ.FT.:	SQ.FT.
PURCHASER:		DATE:	

UPPER EAST SIDE
UNIONVILLE

GREENWOOD

ELEV C • 2917 SQ. FT.
ELEV D • 2981 SQ. FT.

C



D



38'

FIELDGATEHOMES.COM



UPPER EAST SIDE
UNIONVILLE

GREENWOOD

ELEV A • 2919 SQ. FT.
ELEV B • 2981 SQ. FT.

A



B



38'

FIELDGATEHOMES.COM



GREENWOOD

38'

ELEV A • 2919 SQ. FT. | ELEV B • 2981 SQ. FT. | ELEV C • 2917 SQ. FT. | ELEV D • 2981 SQ. FT.
 (NOT INCLUDING 766 (ELEV. A & C) / 781 (ELEV. B & D) SQ.FT. FINISHED BASEMENT)

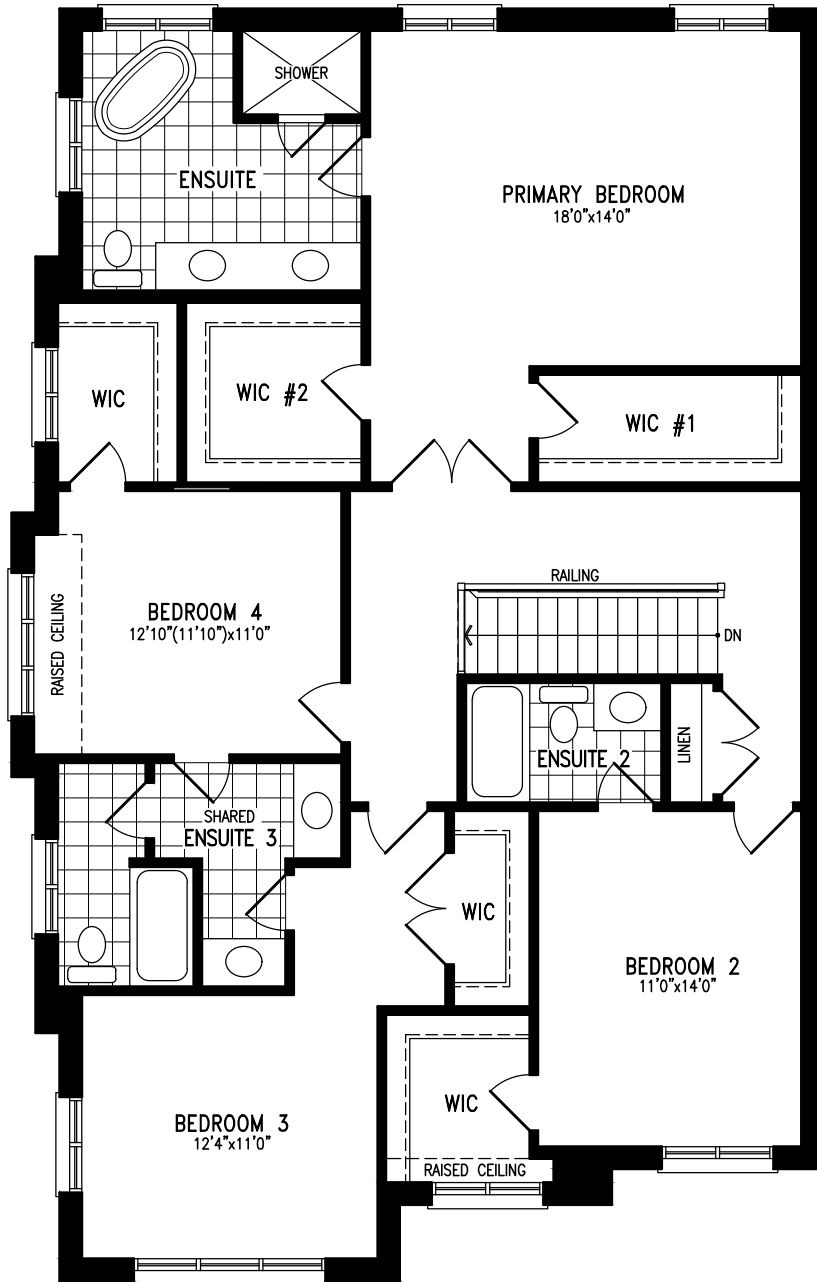


The floorplans and elevations shown, dimensions, specifications and architectural detailing are pre-construction plans and may be revised or improved as necessitated by architectural controls and the construction process. All dimensions are approximate. Actual usable floor space may vary from the stated area. House may be reversed and Purchaser agrees to accept same. Specifications subject to change without notice. Number of steps and location may vary at any exterior entrance including walk-up and walk-out basements. Illustrations are Artist's concept. Exterior railings on plans only as required by grade. E. & O.E. 03/24 A38-3C

SECOND FLOOR PLAN

A38-3C
'GREENWOOD'

2919 s.f. 'A'



SECOND FLOOR PLAN 'A'
(4 BEDROOM)

The floorplans and elevations shown, dimensions, specifications and architectural detailing are pre-construction plans and may be revised or improved as necessitated by architectural controls and the construction process. All dimensions are approximate. Purchaser agrees to accept same. Specifications subject to change without notice. Steps may vary at any exterior entrance. Illustrations are Artist's concept. Exterior railings on plans only as required by grade. E. & O.E. May 2008.

All changes on diagrams should correspond with items in the schedule.

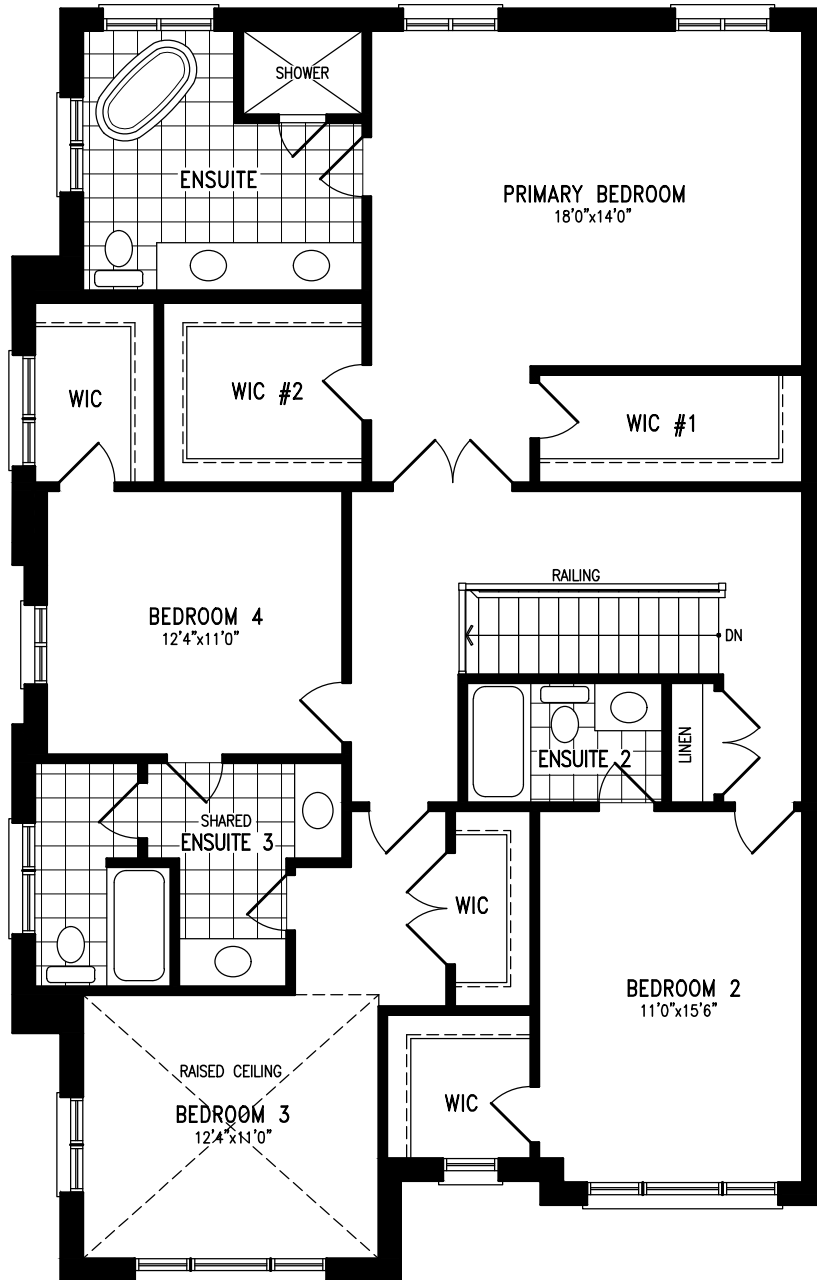
A38-3C

PROJECT:	18015		
LOT NO.:	-		
MODEL TYPE:	A38-3C		
ELEVATION:	'A'	SQ.FT.:	SQ.FT.
PURCHASER:			DATE:

SECOND FLOOR PLAN

A38-3C
'GREENWOOD'

2981 s.f. 'B'



SECOND FLOOR PLAN 'B'
(4 BEDROOM)

The floorplans and elevations shown, dimensions, specifications and architectural detailing are pre-construction plans and may be revised or improved as necessitated by architectural controls and the construction process. All dimensions are approximate. Purchaser agrees to accept same. Specifications subject to change without notice. Steps may vary at any exterior entrance. Illustrations are Artist's concept. Exterior railings on plans only as required by grade. E. & O.E. May 2008.

All changes on diagrams should correspond with items in the schedule.

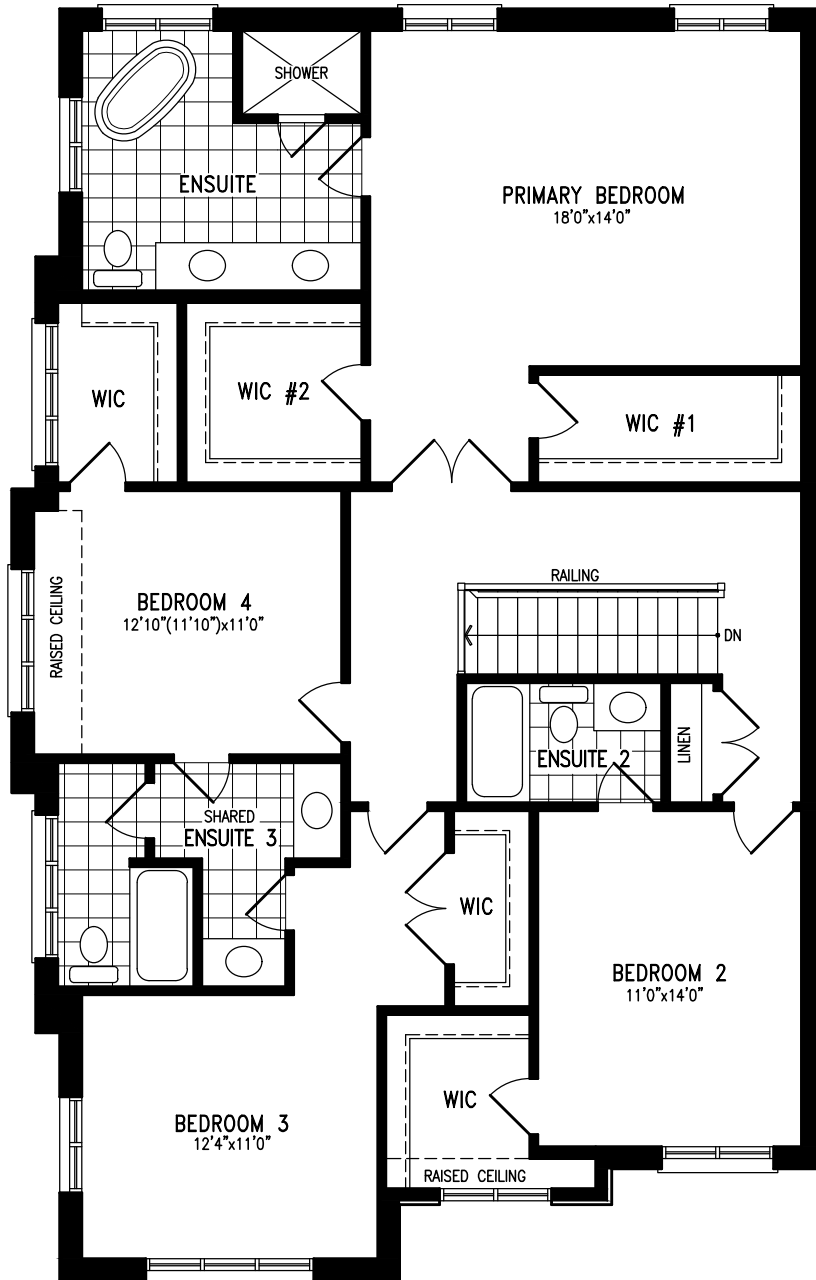
A38-3C

PROJECT:	18015		
LOT NO.:	-		
MODEL TYPE:	A38-3C		
ELEVATION:	'B'	SQ.FT.:	SQ.FT.
PURCHASER:		DATE:	

SECOND FLOOR PLAN

A38-3C
'GREENWOOD'

2917 s.f. 'C'



SECOND FLOOR PLAN 'C'
(4 BEDROOM)

The floorplans and elevations shown, dimensions, specifications and architectural detailing are pre-construction plans and may be revised or improved as necessitated by architectural controls and the construction process. All dimensions are approximate. Purchaser agrees to accept same. Specifications subject to change without notice. Steps may vary at any exterior entrance. Illustrations are Artist's concept. Exterior railings on plans only as required by grade. E. & O.E. May 2008.

All changes on diagrams should correspond with items in the schedule.

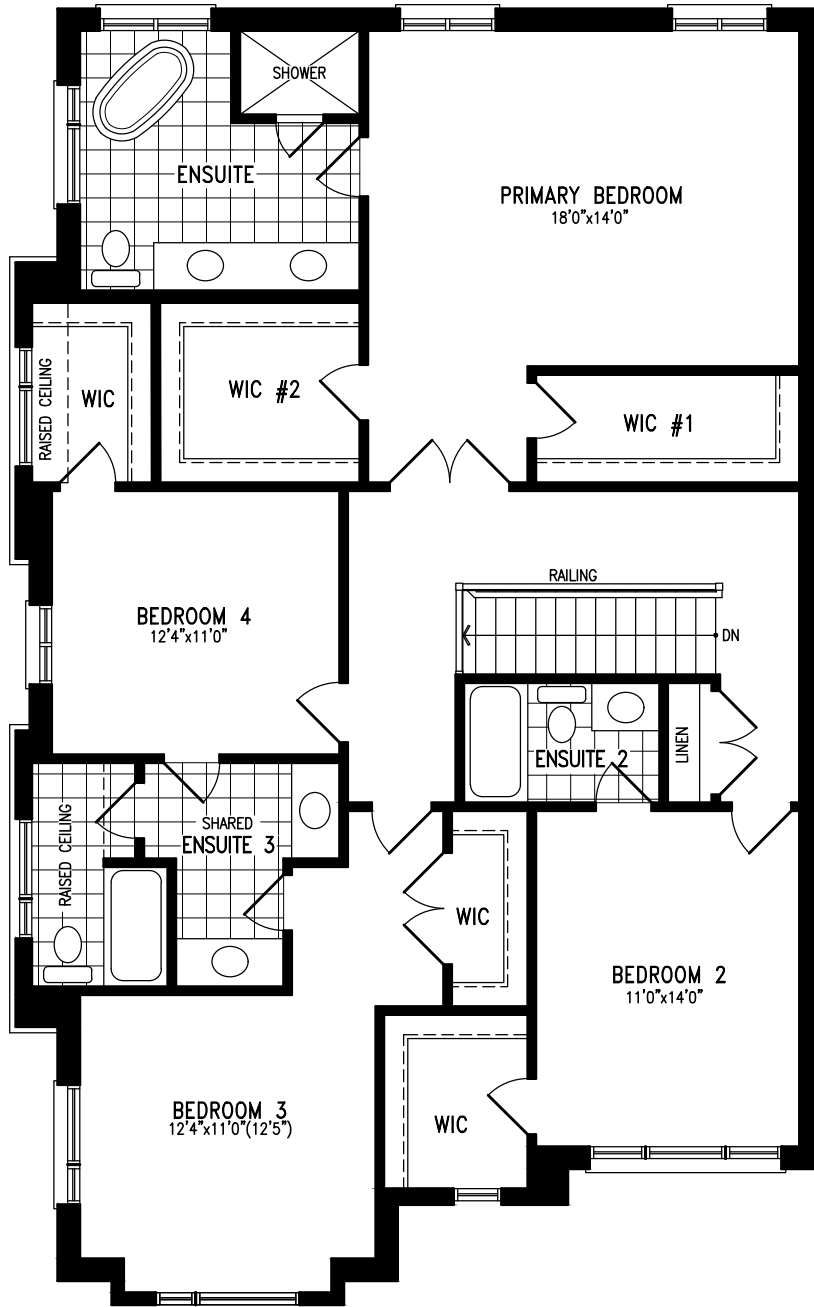
A38-3C

PROJECT:	18015		
LOT NO.:	-		
MODEL TYPE:	A38-3C		
ELEVATION:	'C'	SQ.FT.:	SQ.FT.
PURCHASER:			DATE:

SECOND FLOOR PLAN

A38-3C
'GREENWOOD'

2981 s.f. 'D'



SECOND FLOOR PLAN 'D'
(4 BEDROOM)

The floorplans and elevations shown, dimensions, specifications and architectural detailing are pre-construction plans and may be revised or improved as necessitated by architectural controls and the construction process. All dimensions are approximate. Purchaser agrees to accept same. Specifications subject to change without notice. Steps may vary at any exterior entrance. Illustrations are Artist's concept. Exterior railings on plans only as required by grade. E. & O.E. May 2008.

All changes on diagrams should correspond with items in the schedule.

A38-3C

PROJECT:	18015		
LOT NO.:	-		
MODEL TYPE:	A38-3C		
ELEVATION:	'D'	SQ.FT.:	SQ.FT.
PURCHASER:			DATE:

UPPER EAST SIDE
UNIONVILLE

WATERSIDE (MOD)

ELEV B • 2743 SQ. FT.
ELEV C • 2742 SQ. FT.



38'

FIELDGATEHOMES.COM



FIELDGATEHOMES.COM

UPPER EAST SIDE
UNIONVILLE

WATERSIDE (MOD)

ELEV A • 2743 SQ. FT.

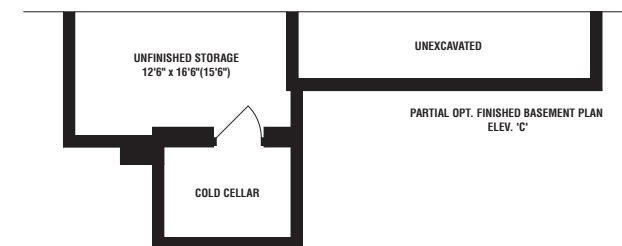
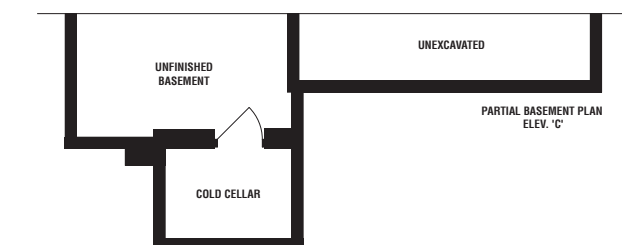
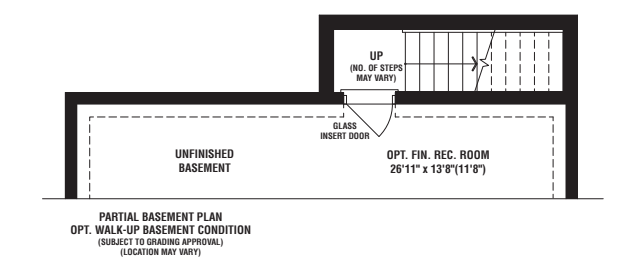
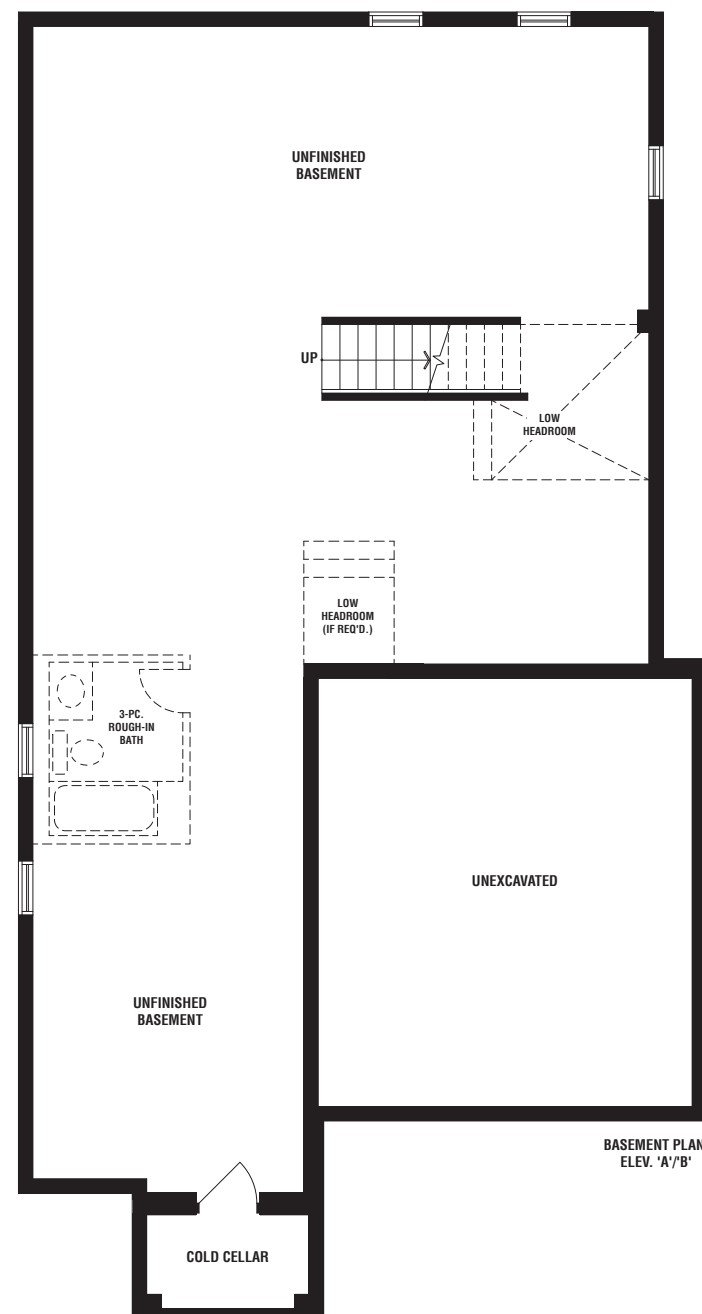
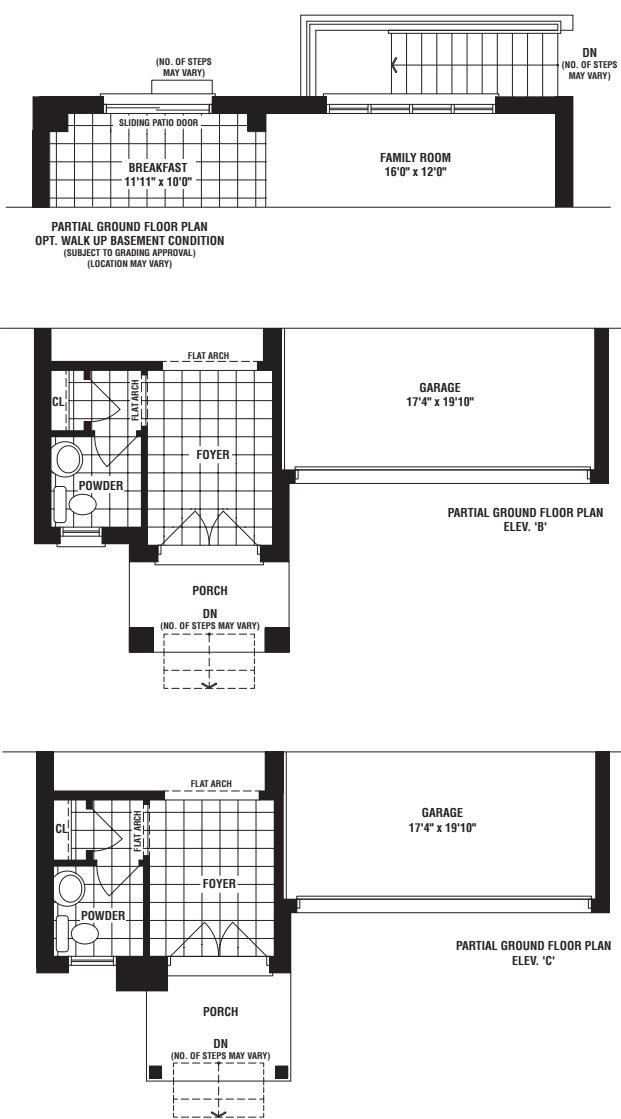
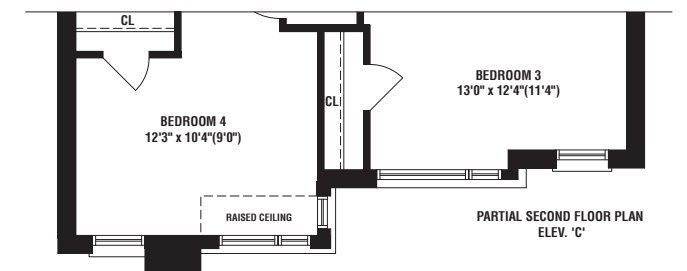
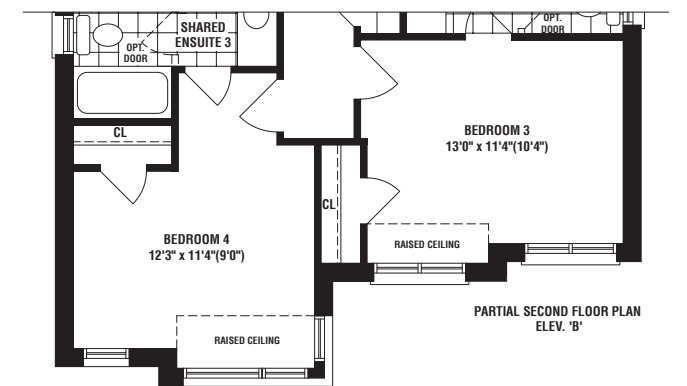
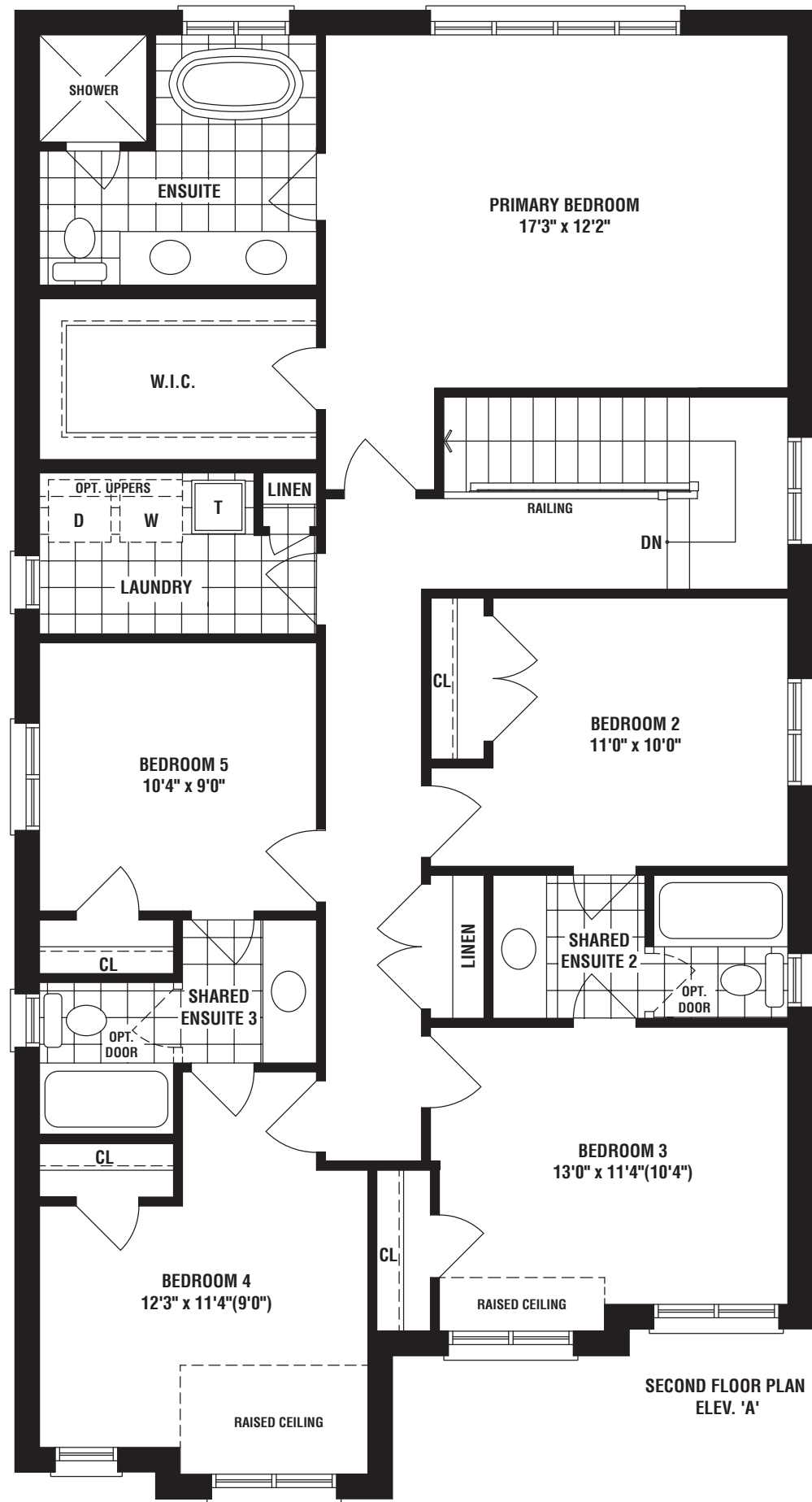
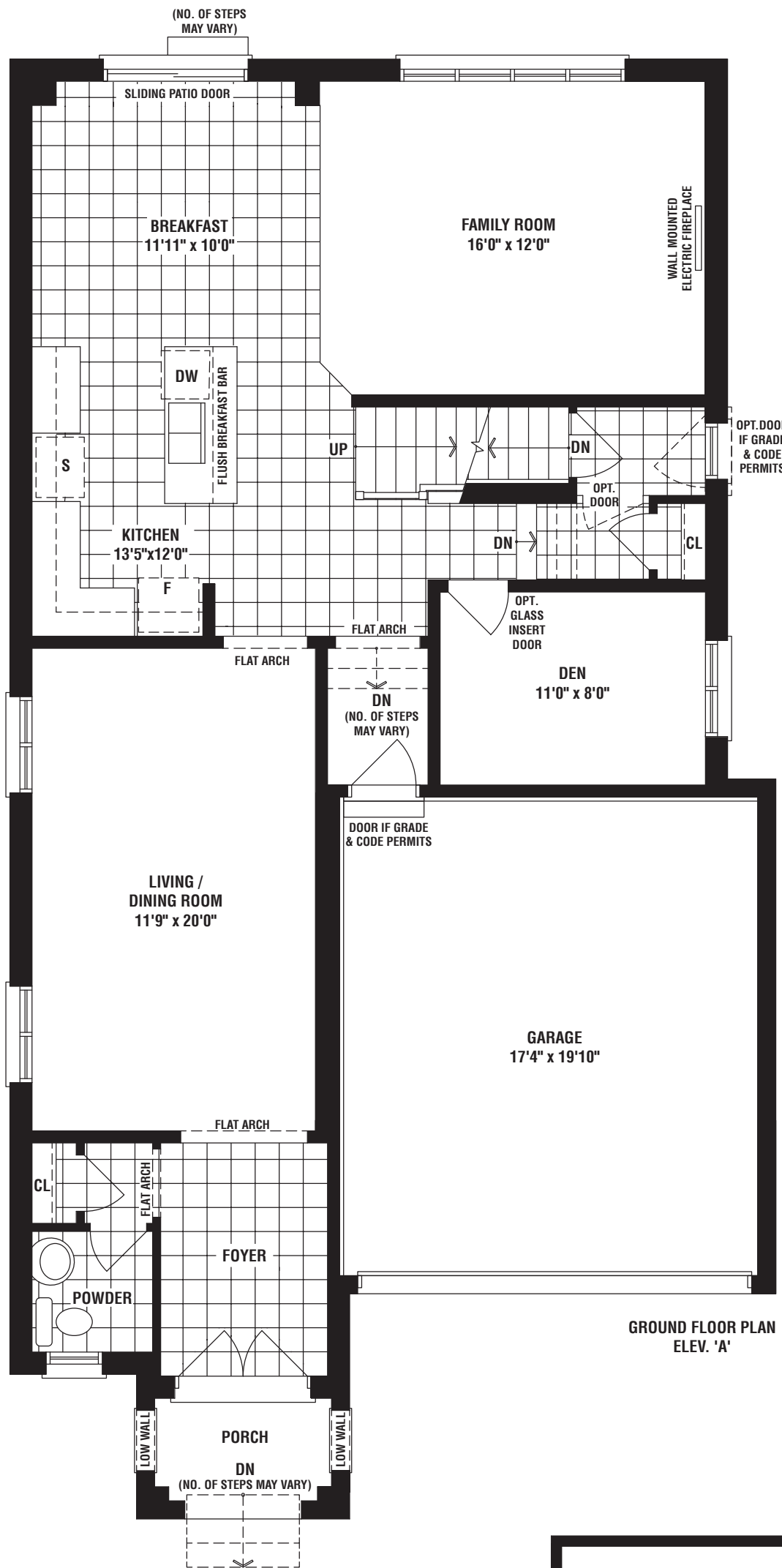


38'

WATERSIDE (MOD)

ELEV A • 2743 SQ. FT. | ELEV B • 2743 SQ. FT. | ELEV C • 2742 SQ. FT.
(NOT INCLUDING 639 SQ. FT. FINISHED BASEMENT)

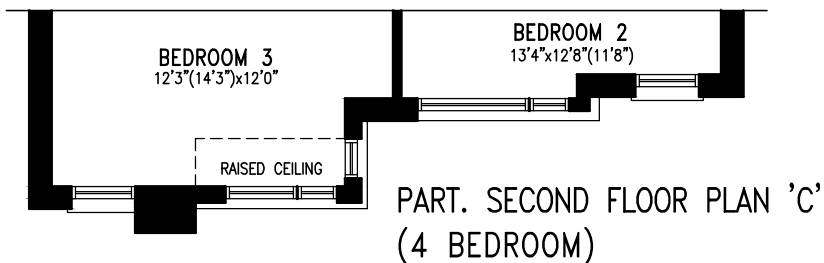
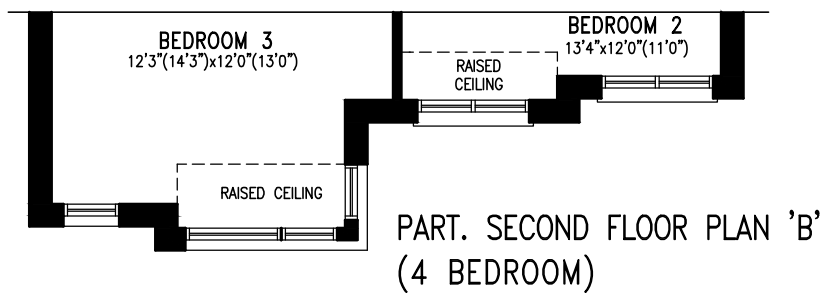
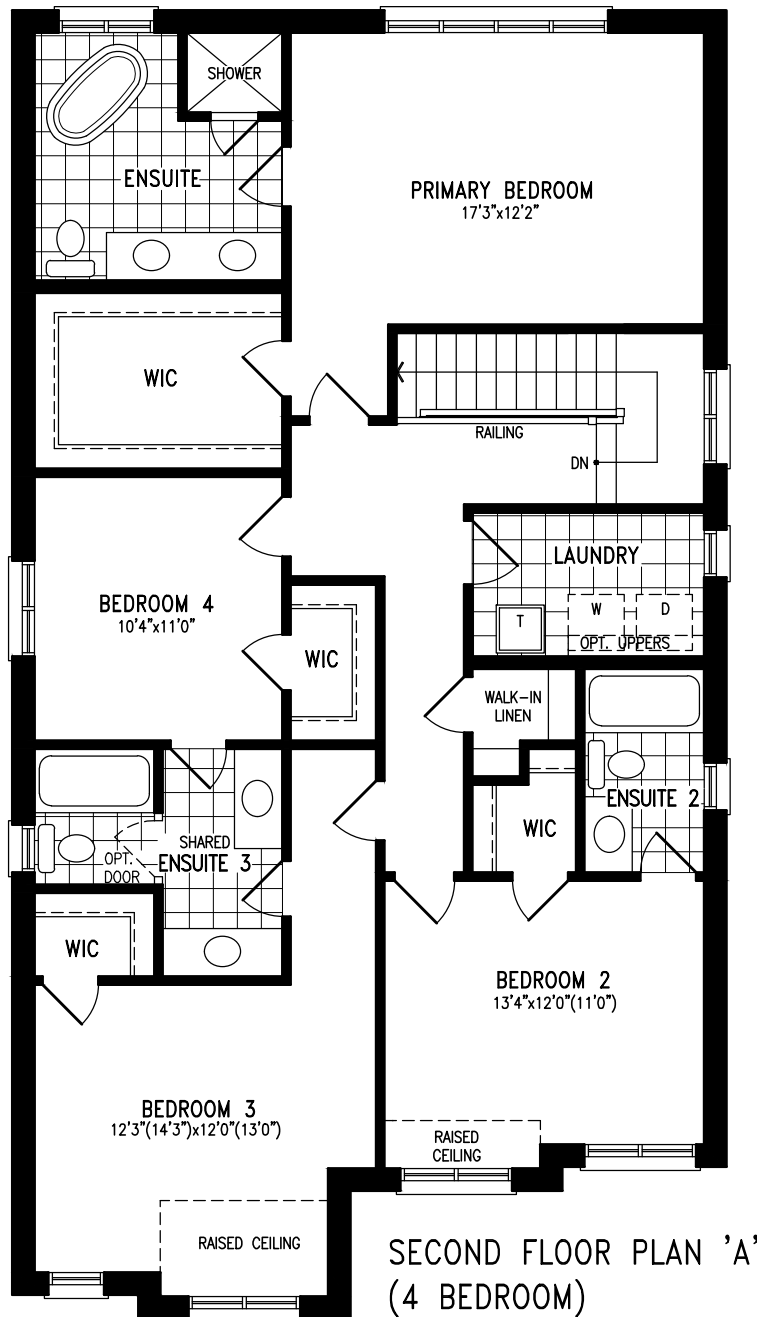
38'



SECOND FLOOR PLAN

A38-2 MOD. 'WATERSIDE'

2743 s.f. 'A'
 2743 s.f. 'B'
 2742 s.f. 'C'



The floorplans and elevations shown, dimensions, specifications and architectural detailing are pre-construction plans and may be revised or improved as necessitated by architectural controls and the construction process. All dimensions are approximate. Purchaser agrees to accept same. Specifications subject to change without notice. Steps may vary at any exterior entrance. Illustrations are Artist's concept. Exterior railings on plans only as required by grade. E. & O.E. May 2008.

All changes on diagrams should correspond with items in the schedule.

A38-2 MOD

PROJECT:	18015		
LOT NO.:	-		
MODEL TYPE:	A38-2 MOD.		
ELEVATION:	'A', 'B', AND 'C'	SQ.FT.:	SQ.FT.
PURCHASER:		DATE:	

UPPER EAST SIDE
UNIONVILLE

WATERSIDE

ELEV B • 2803 SQ. FT.
ELEV C • 2801 SQ. FT.



38'

FIELDGATEHOMES.COM



FIELDGATEHOMES.COM

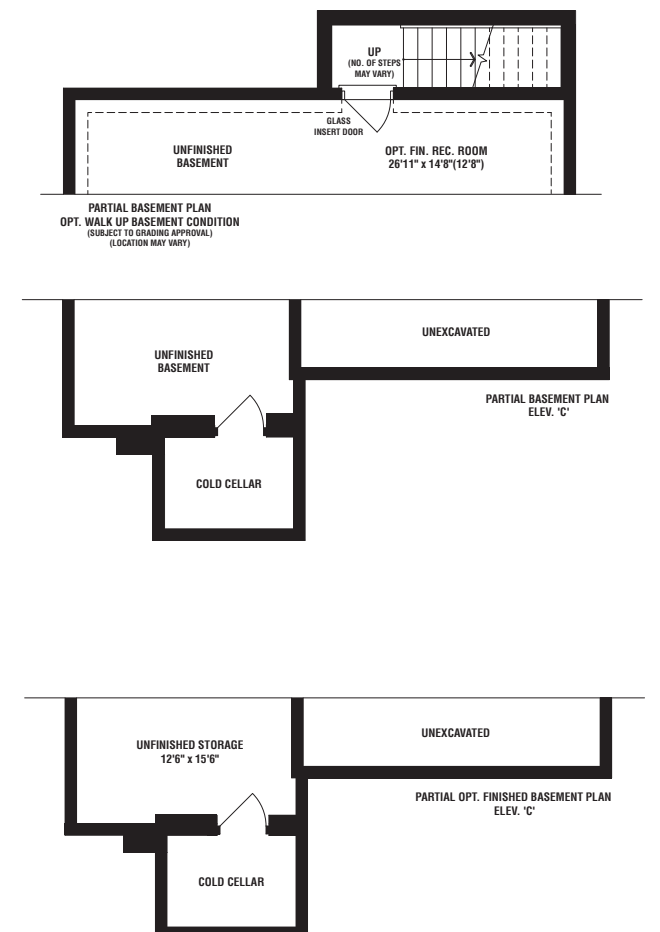
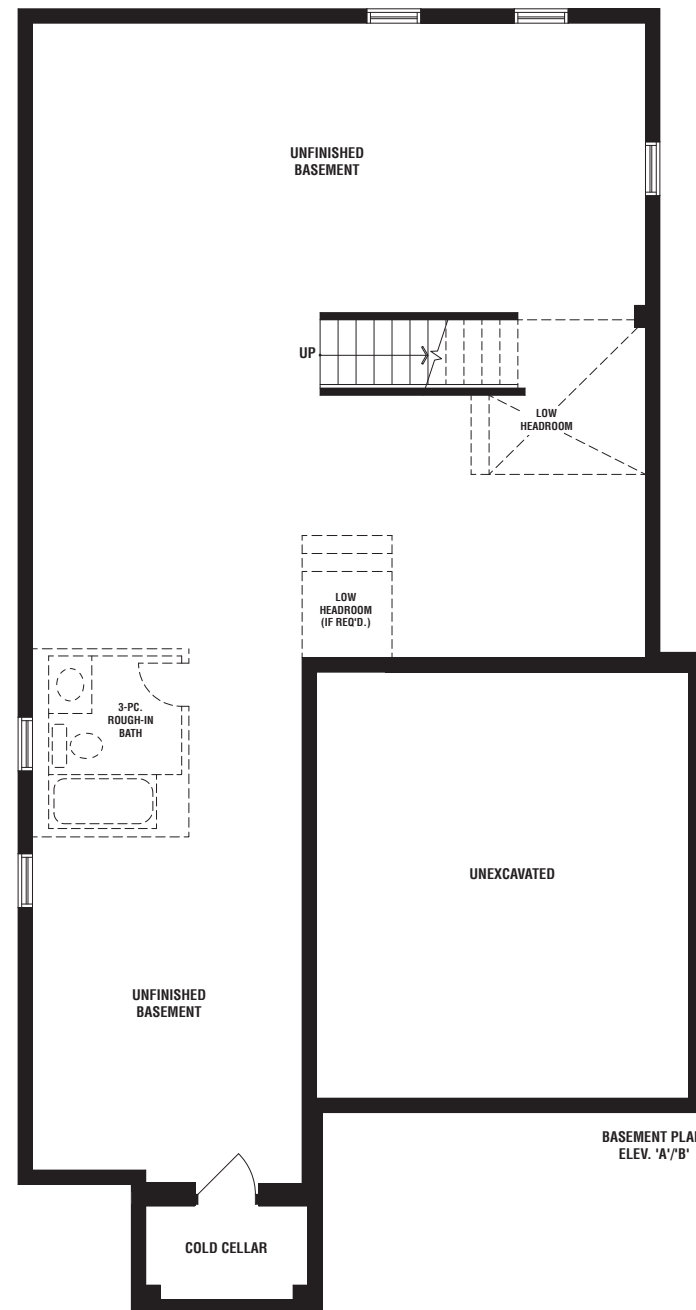
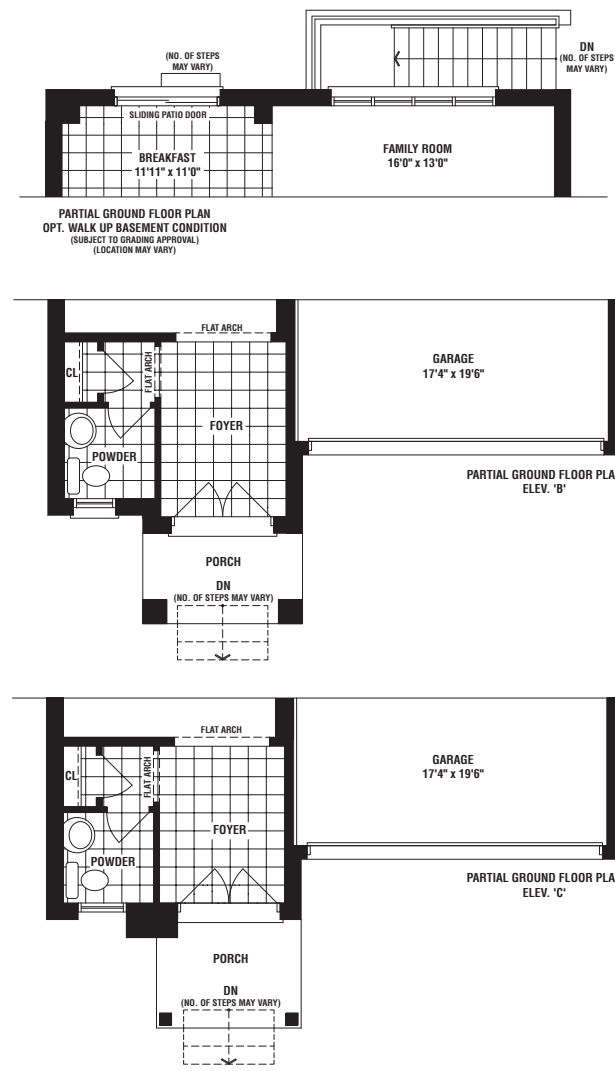
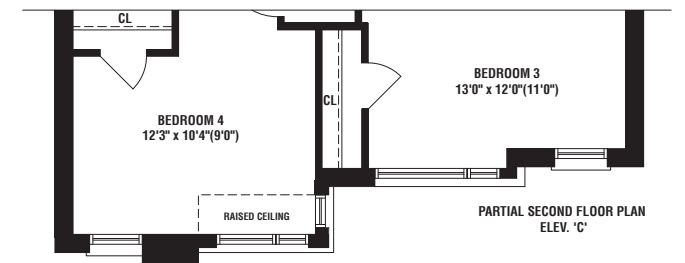
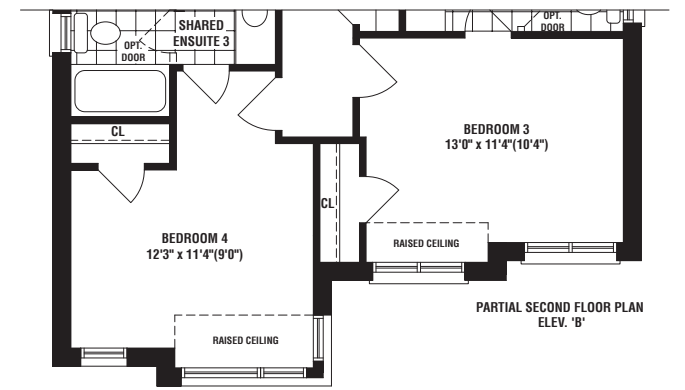
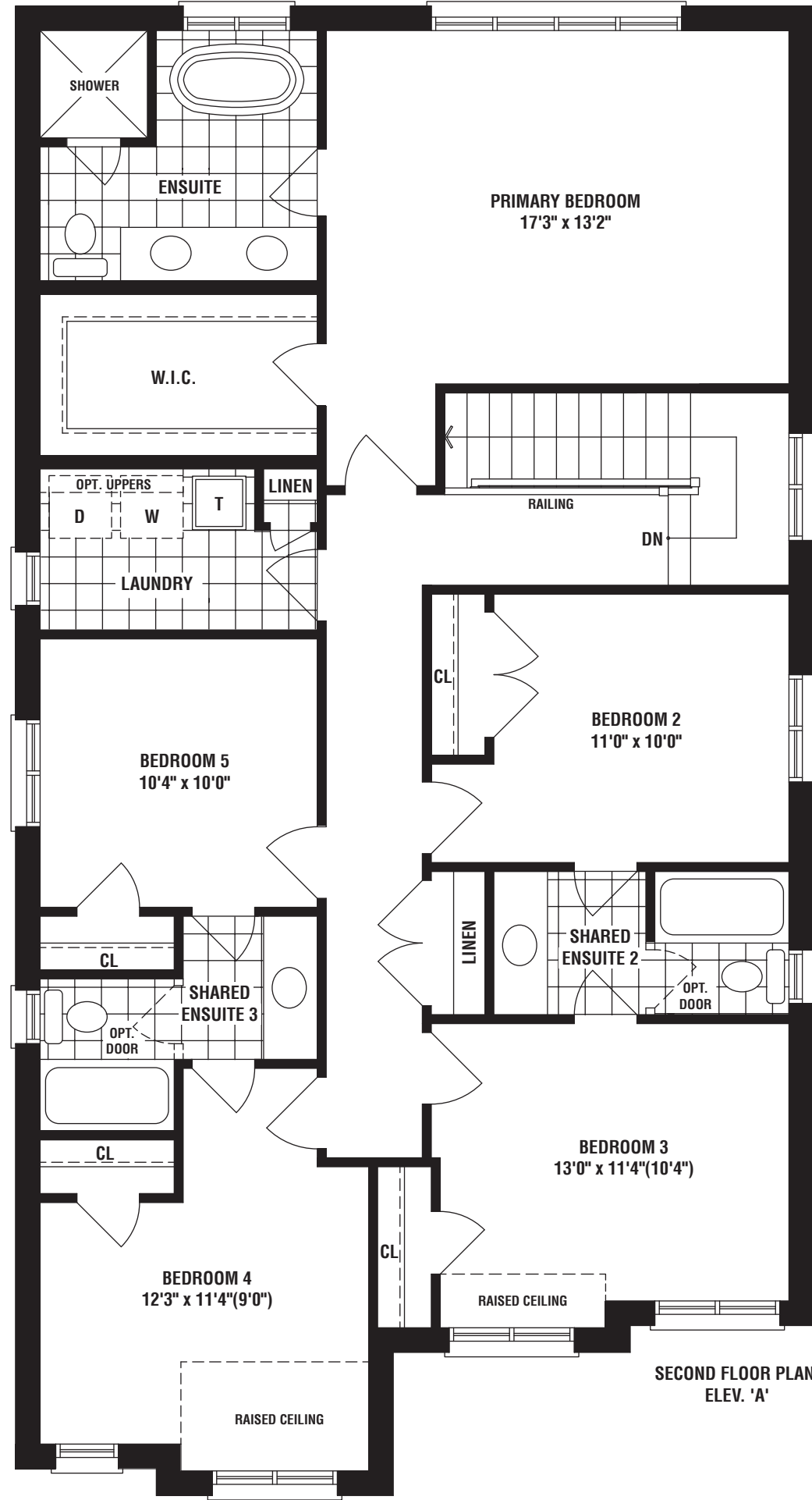
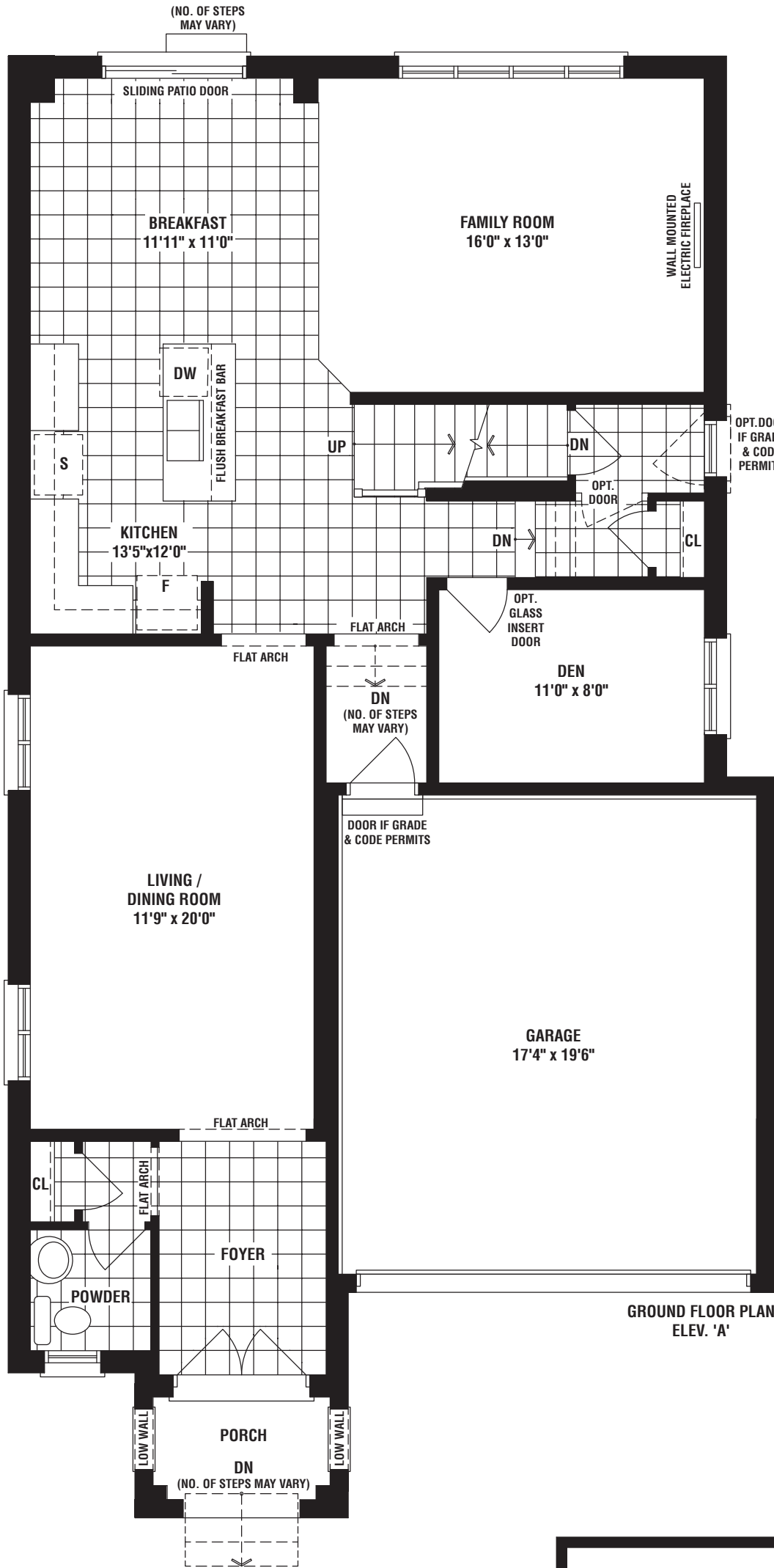
UPPER EAST SIDE
UNIONVILLE

WATERSIDE

ELEV A • 2803 SQ. FT.



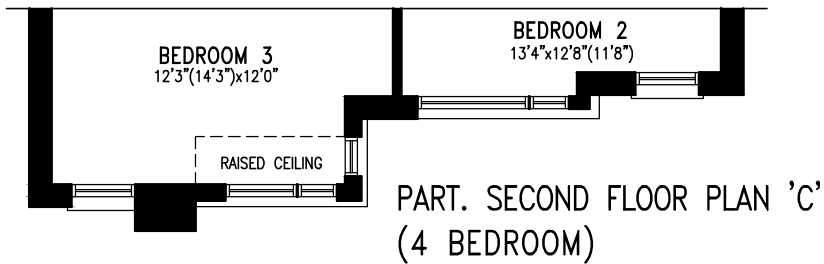
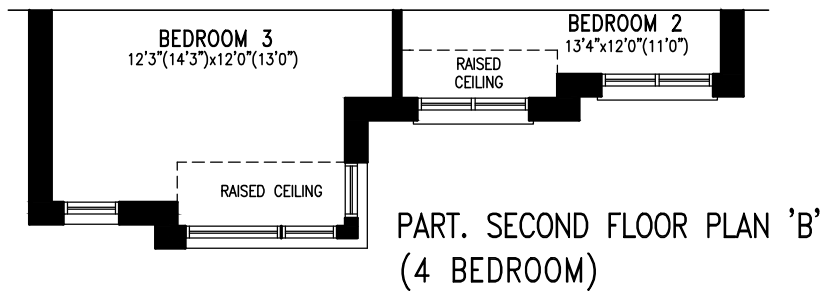
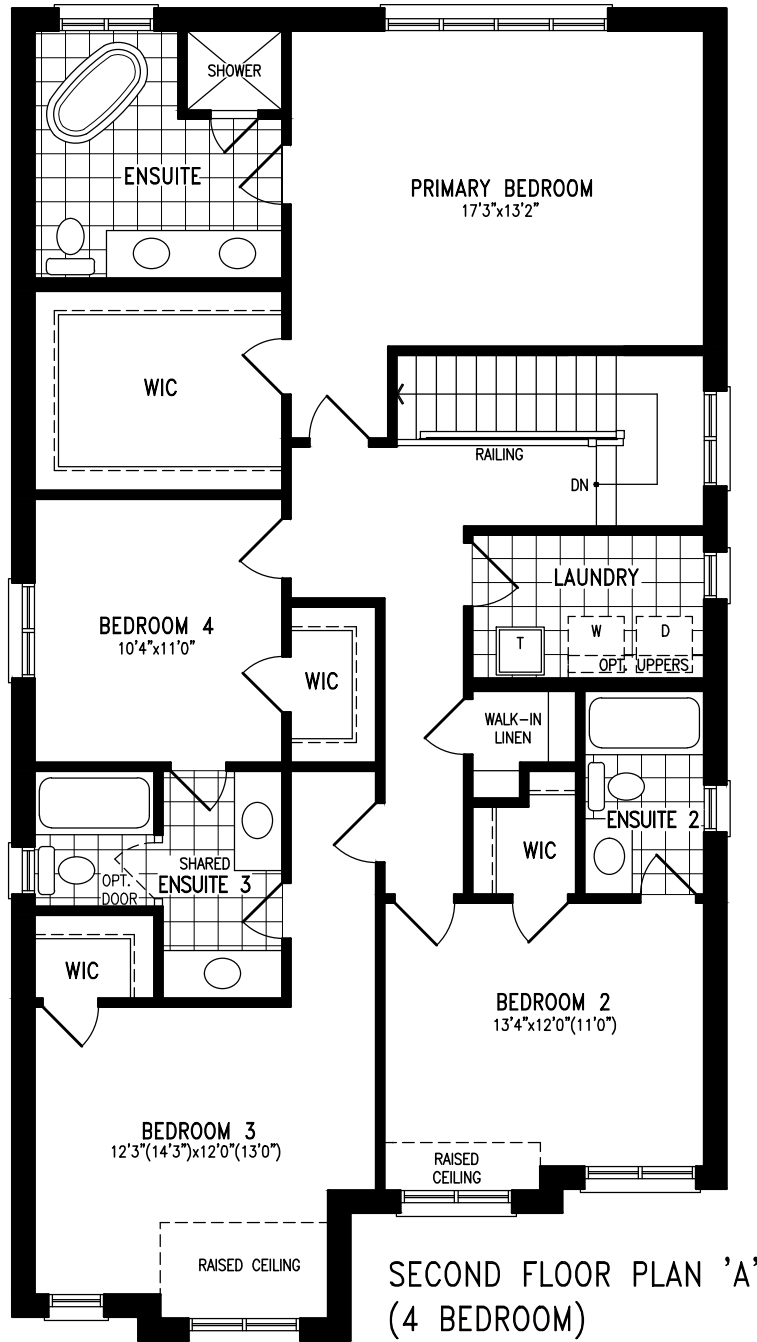
38'



SECOND FLOOR PLAN

A38-2 'WATERSIDE'

2803 s.f. 'A'
 2803 s.f. 'B'
 2801 s.f. 'C'



The floorplans and elevations shown, dimensions, specifications and architectural detailing are pre-construction plans and may be revised or improved as necessitated by architectural controls and the construction process. All dimensions are approximate. Purchaser agrees to accept same. Specifications subject to change without notice. Steps may vary at any exterior entrance. Illustrations are Artist's concept. Exterior railings on plans only as required by grade. E. & O.E. May 2008.

All changes on diagrams should correspond with items in the schedule.

A38-2

PROJECT:	18015		
LOT NO.:	-		
MODEL TYPE:	A38-2		
ELEVATION:	'A', 'B', AND 'C'	SQ.FT.:	SQ.FT.
PURCHASER:		DATE:	

UPPER EAST SIDE
UNIONVILLE

SEASIDE

ELEV B • 2664 SQ. FT.
ELEV C • 2664 SQ. FT.



38'

FIELDGATEHOMES.COM



FIELDGATEHOMES.COM

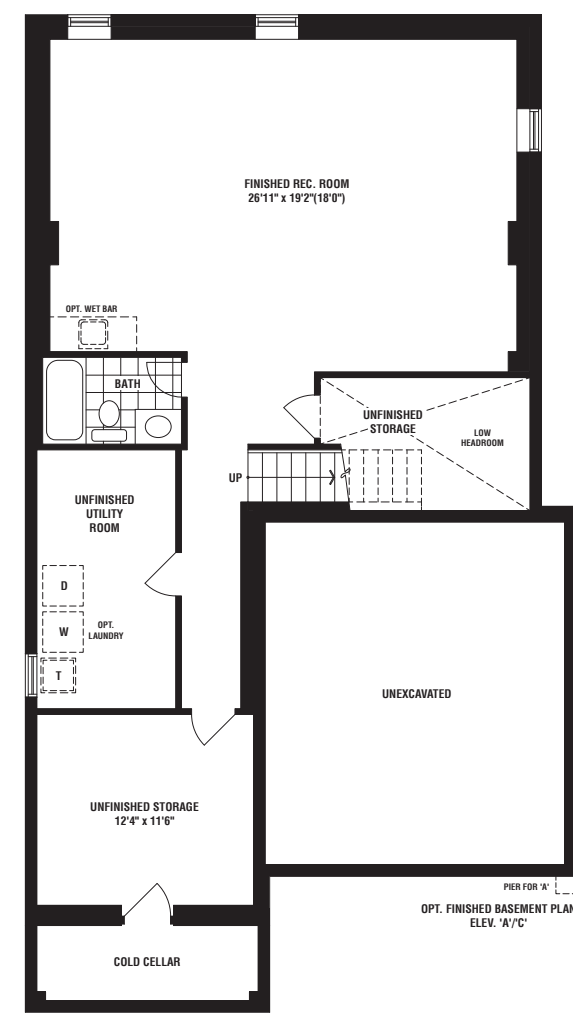
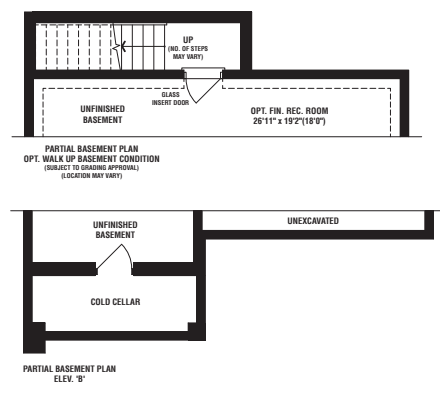
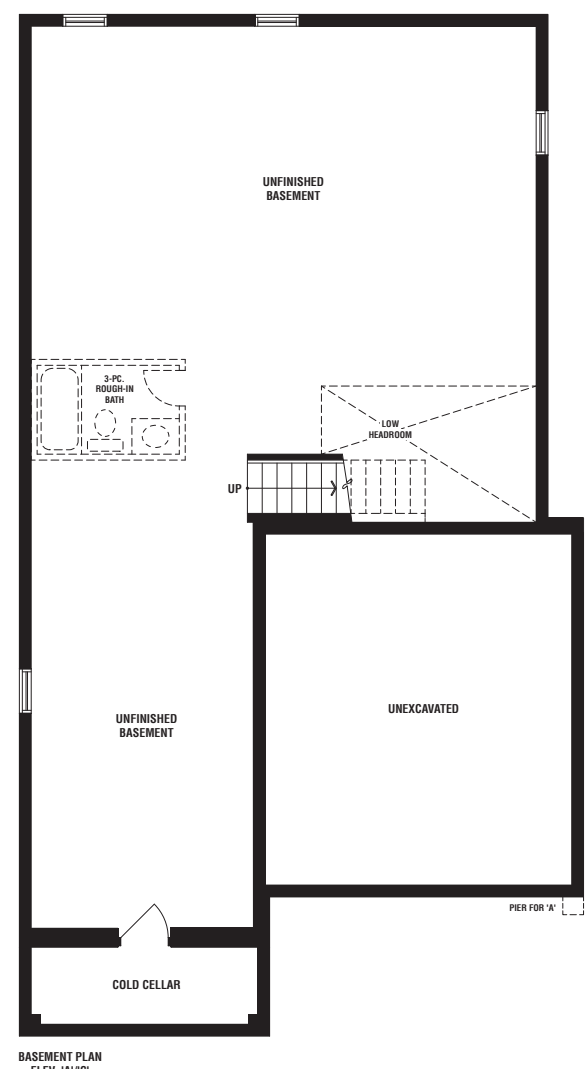
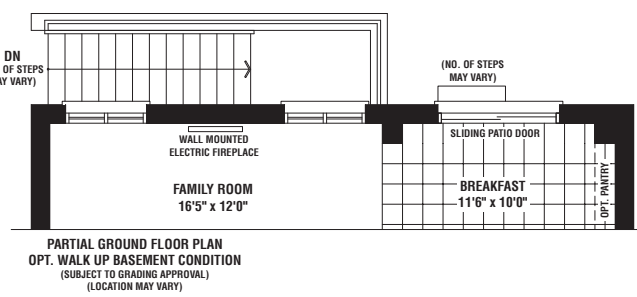
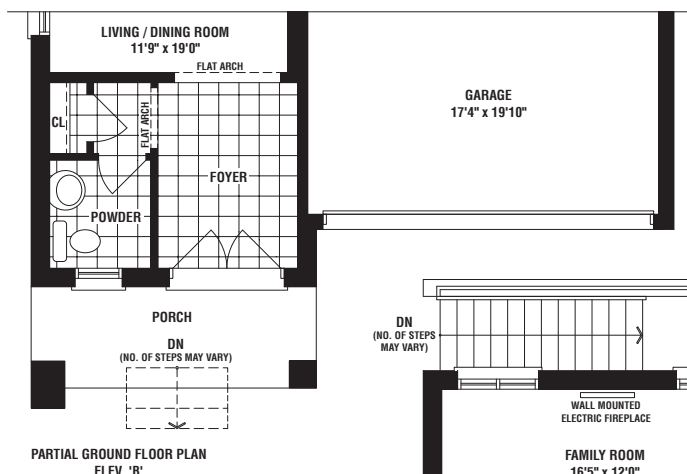
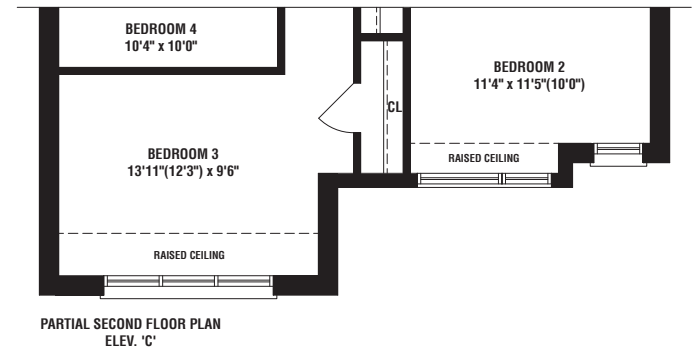
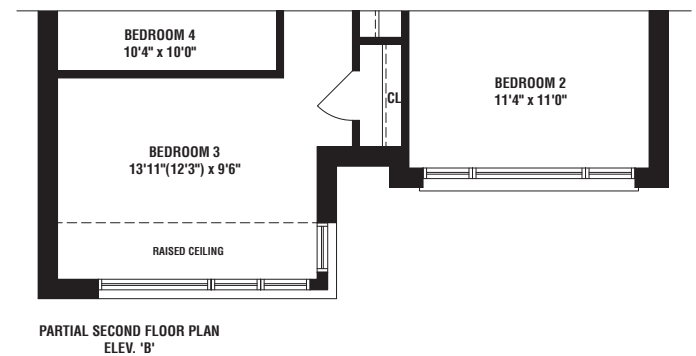
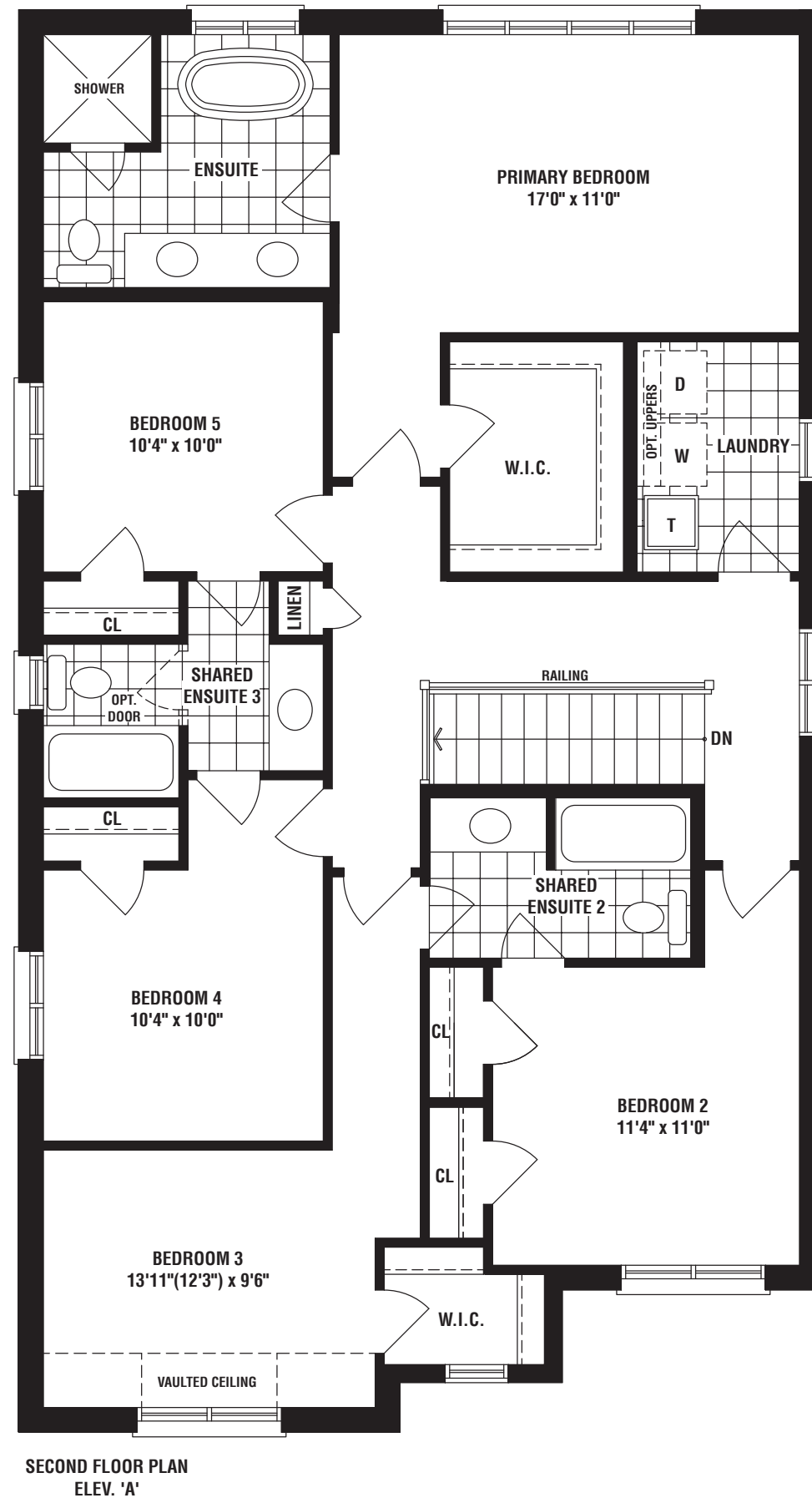
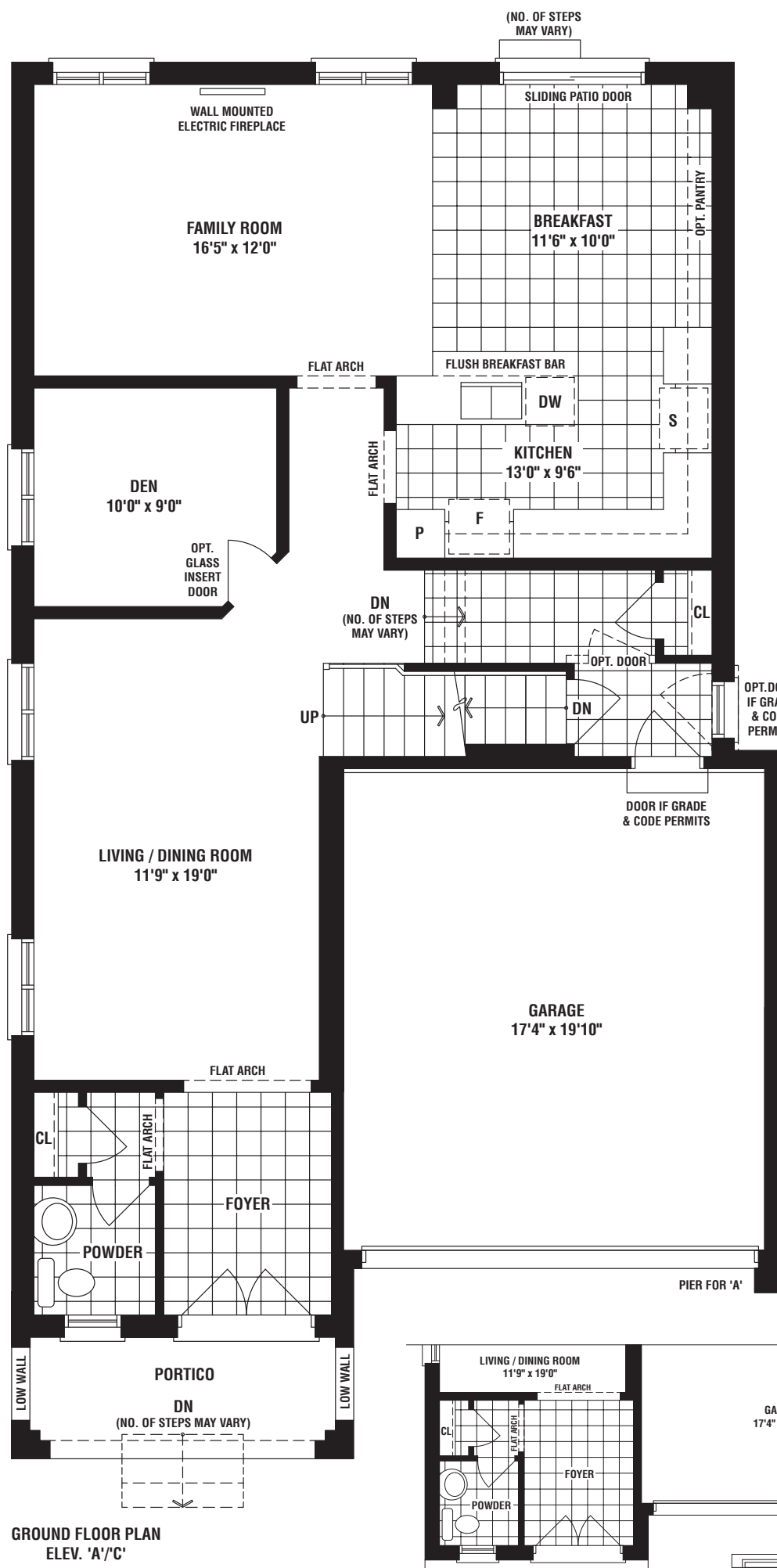
UPPER EAST SIDE
UNIONVILLE

SEASIDE

ELEV A • 2687 SQ. FT.



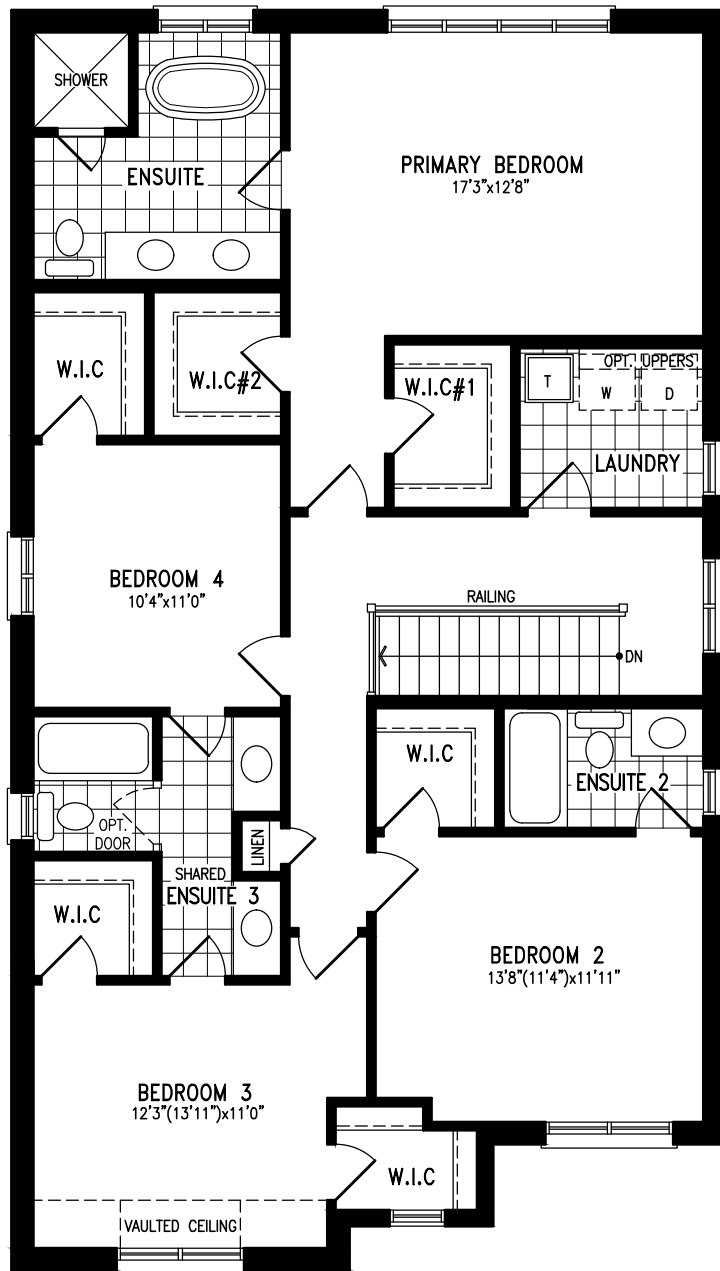
38'



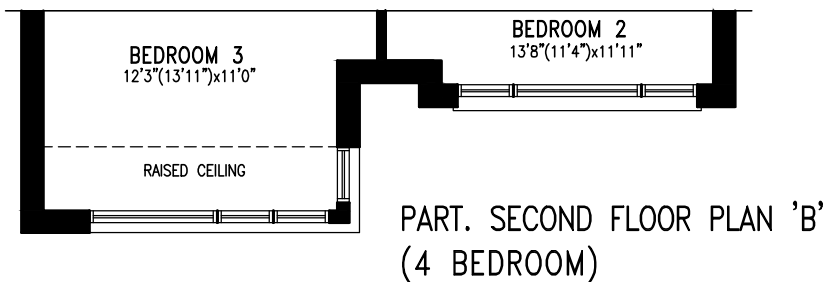
SECOND FLOOR PLAN

A38-1 'SEASIDE'

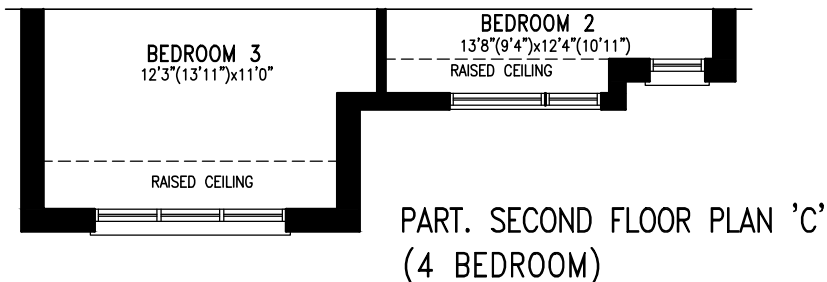
2687 s.f. 'A'
 2664 s.f. 'B'
 2664 s.f. 'C'



SECOND FLOOR PLAN 'A'
 (4 BEDROOM)



PART. SECOND FLOOR PLAN 'B'
 (4 BEDROOM)



PART. SECOND FLOOR PLAN 'C'
 (4 BEDROOM)

The floorplans and elevations shown, dimensions, specifications and architectural detailing are pre-construction plans and may be revised or improved as necessitated by architectural controls and the construction process. All dimensions are approximate. Purchaser agrees to accept same. Specifications subject to change without notice. Steps may vary at any exterior entrance. Illustrations are Artist's concept. Exterior railings on plans only as required by grade. E. & O.E. May 2008.

All changes on diagrams should correspond with items in the schedule.

A38-1

PROJECT:	18015		
LOT NO.:	-		
MODEL TYPE:	A38-1		
ELEVATION:	'A', 'B', AND 'C'	SQ.FT.:	SQ.FT.
PURCHASER:		DATE:	

UPPER EAST SIDE
UNIONVILLE

GROVES

ELEV B • 2990 SQ. FT.
ELEV C • 3008 SQ. FT.



38'

FIELDGATEHOMES.COM



FIELDGATEHOMES.COM

UPPER EAST SIDE
UNIONVILLE

GROVES

ELEV A • 2981 SQ. FT.



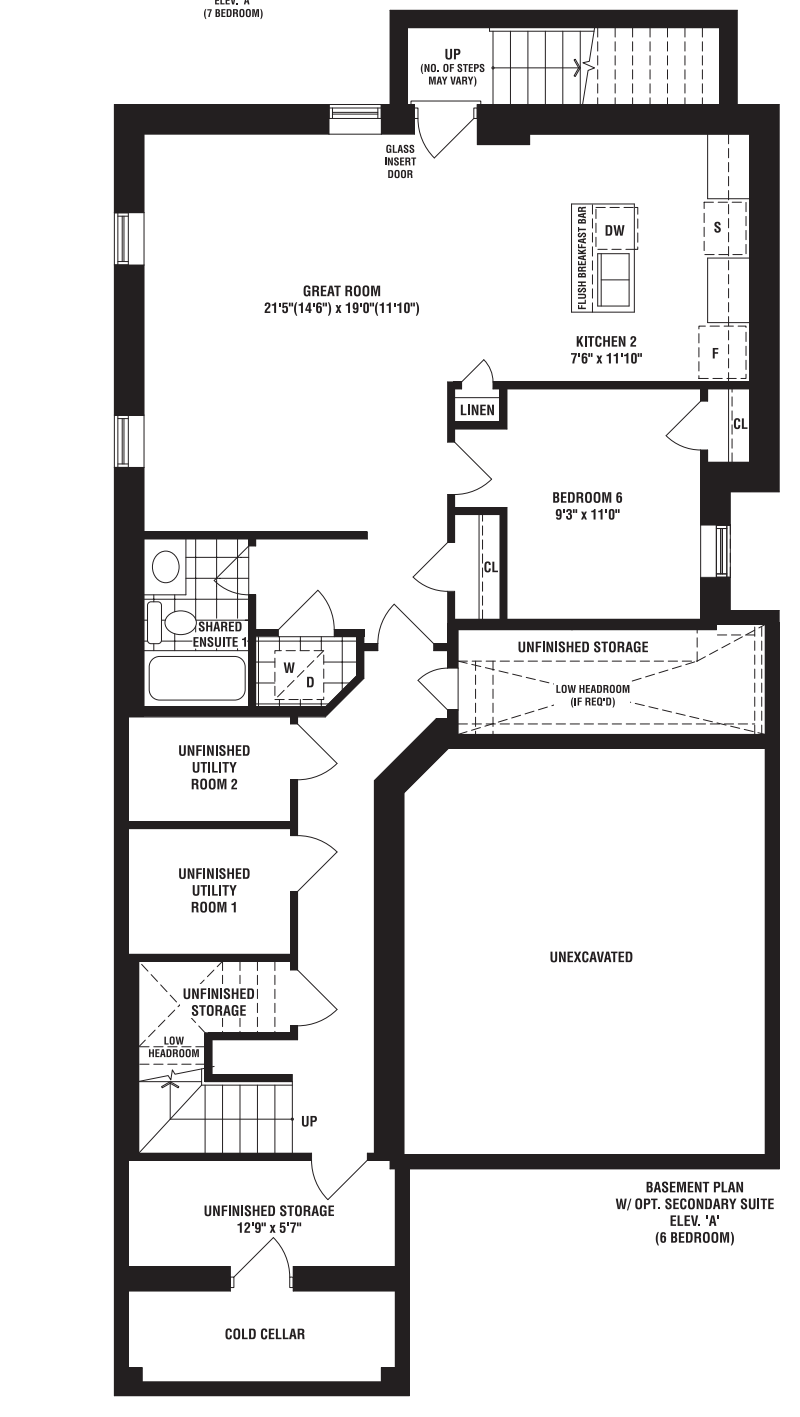
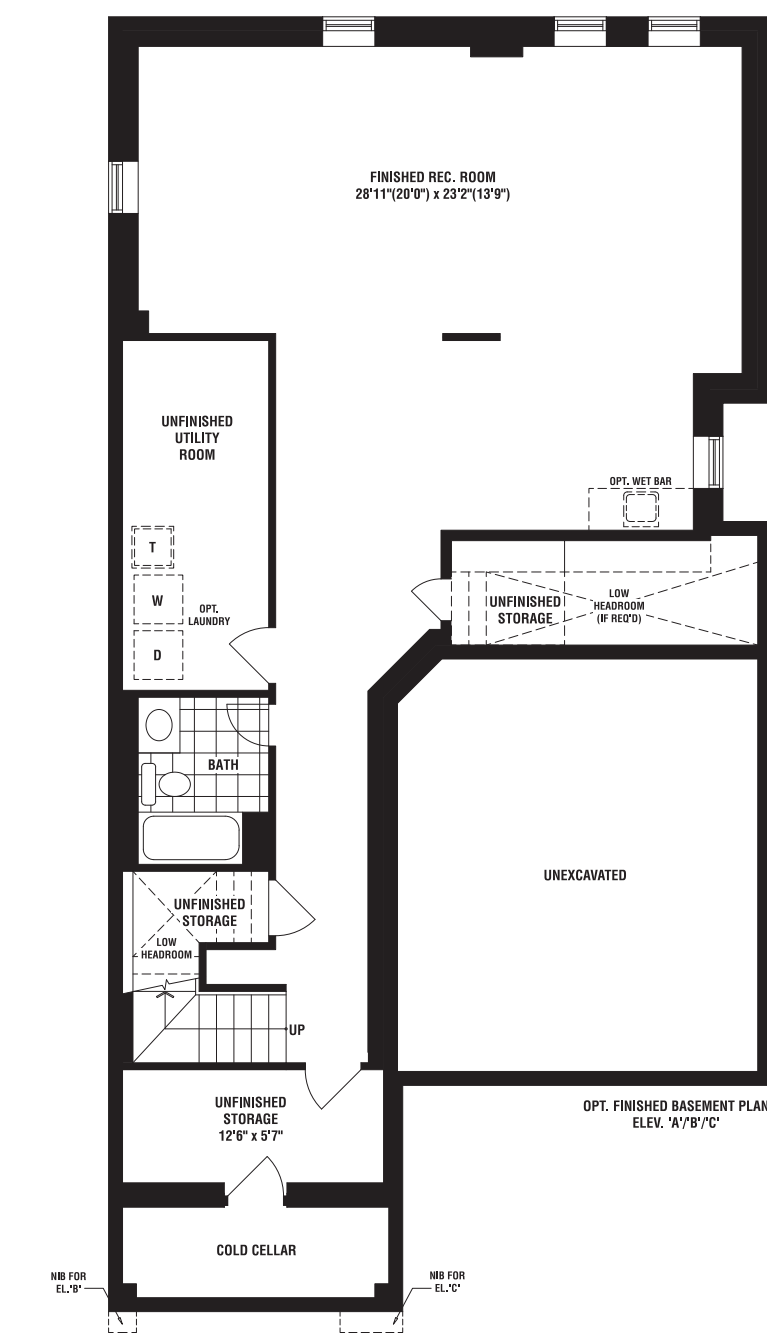
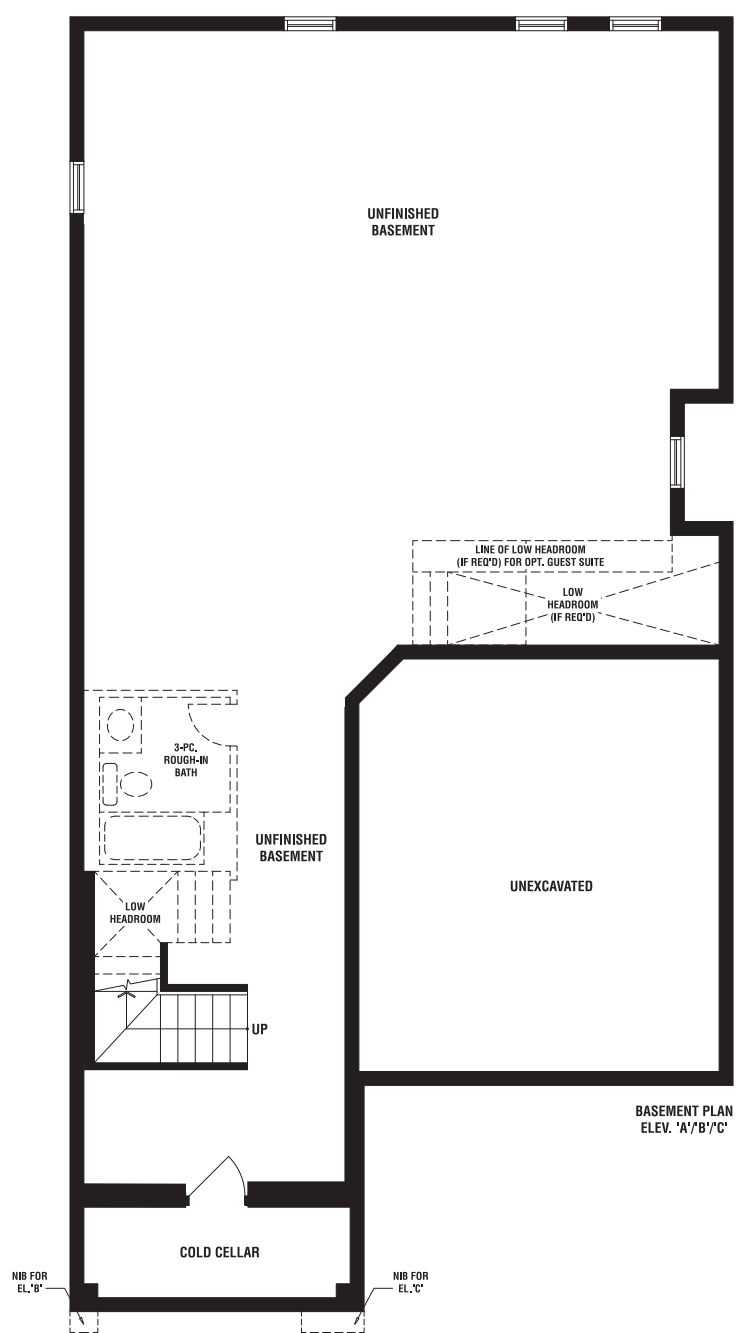
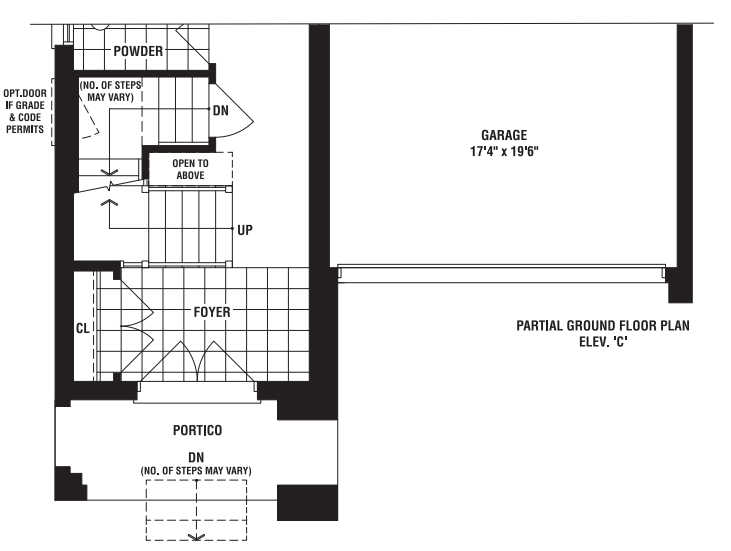
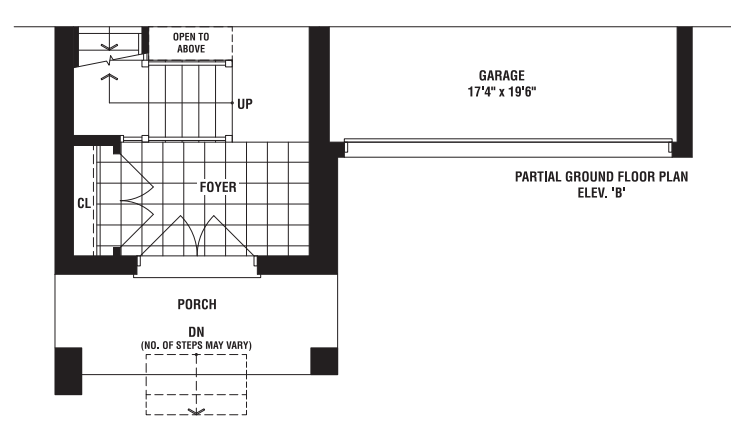
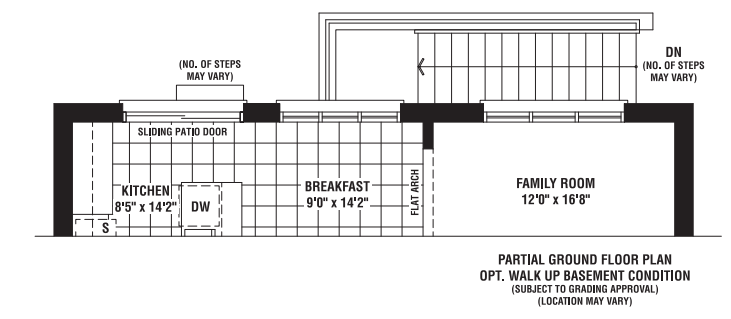
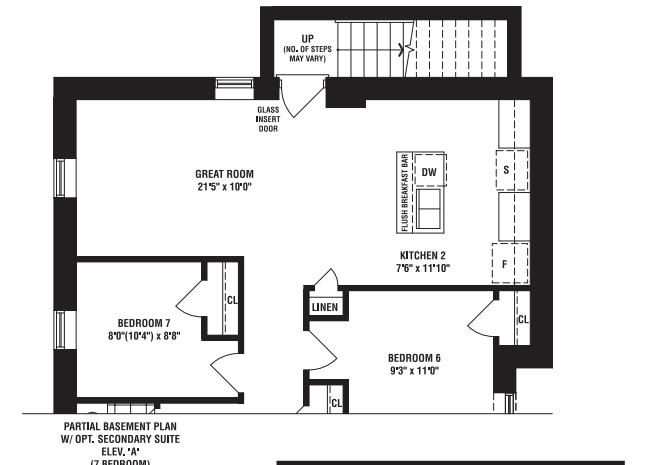
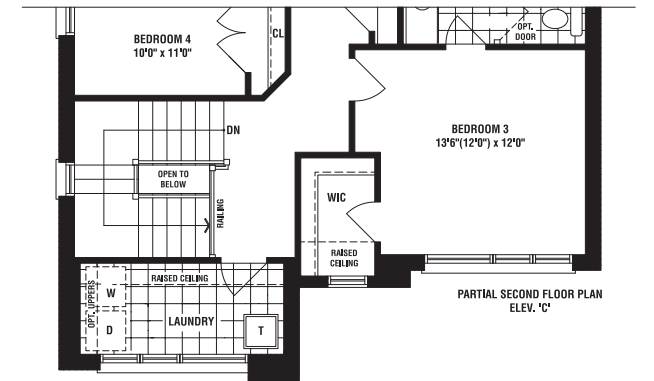
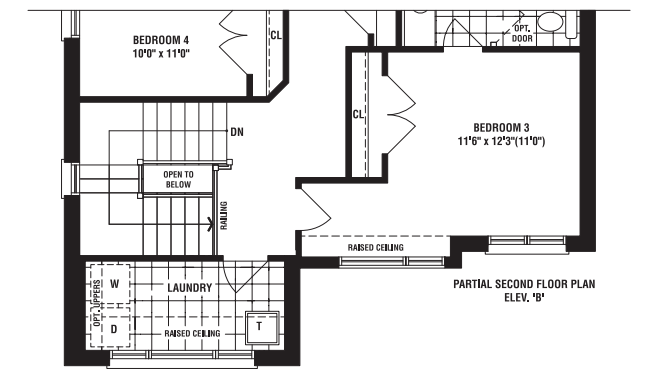
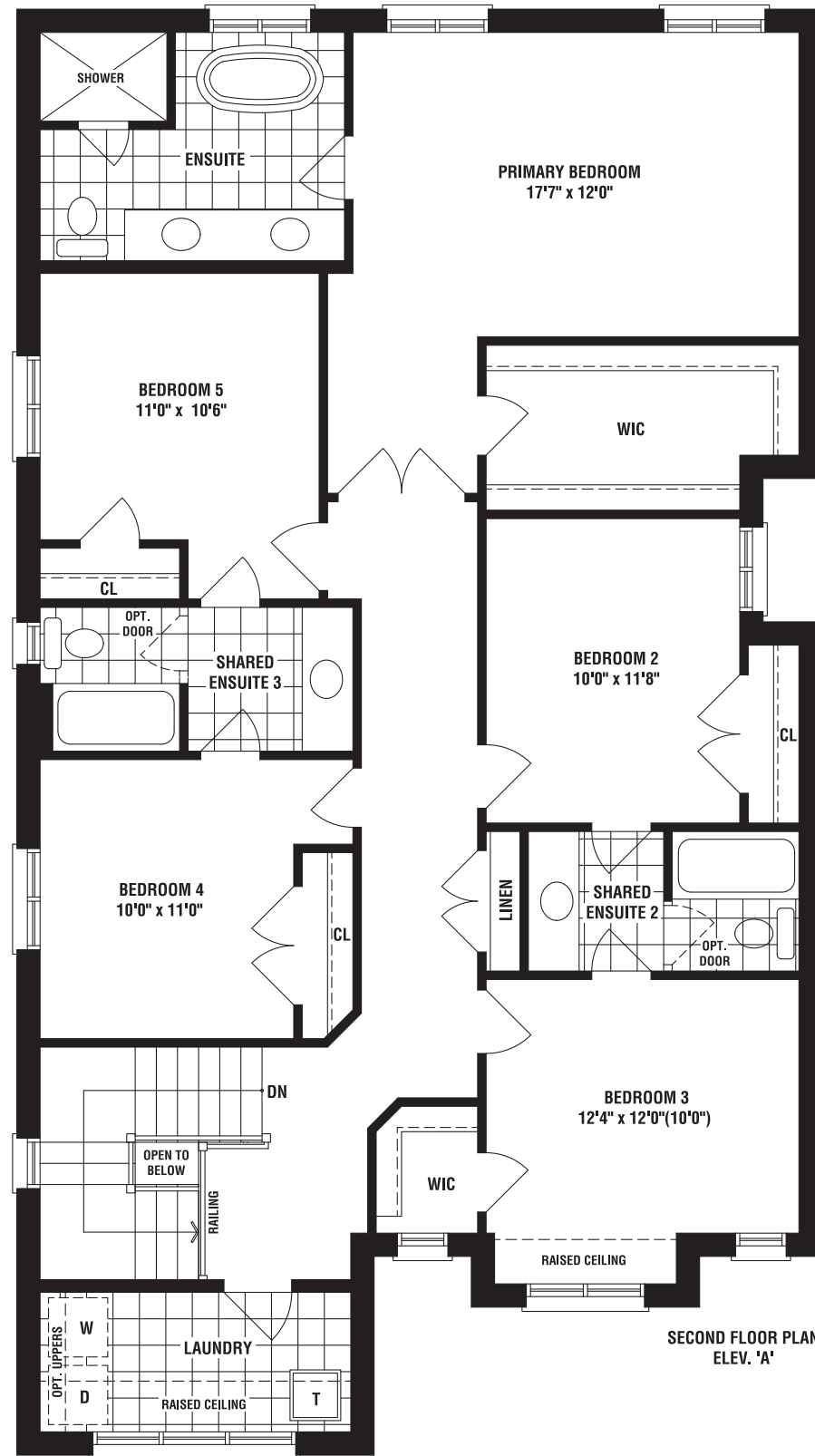
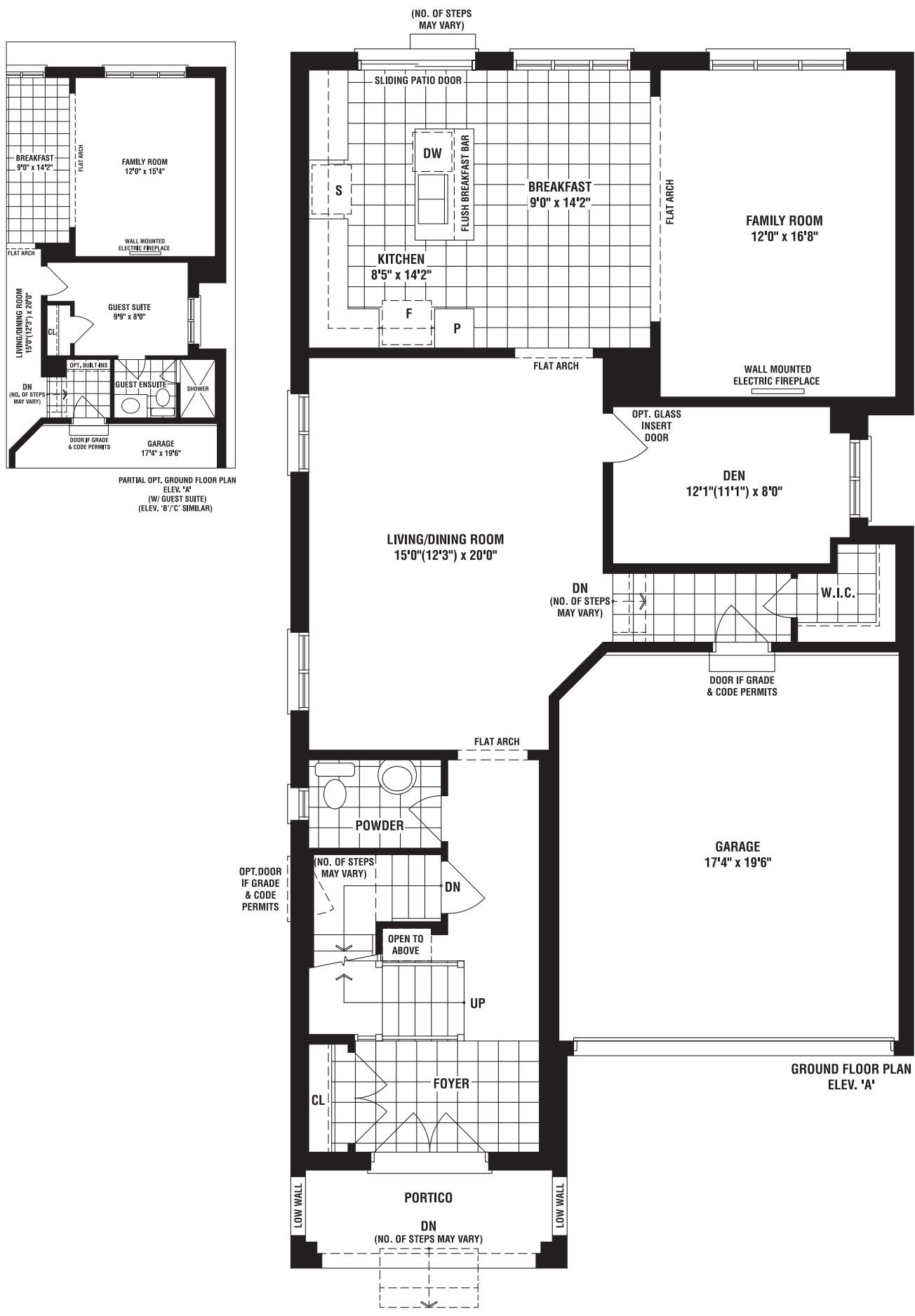
38'

GROVES

38'

ELEV A • 2981 SQ. FT. | ELEV B • 2990 SQ. FT. | ELEV C • 3008 SQ. FT.
(NOT INCLUDING 912 SQ. FT. FINISHED BASEMENT)

WITH SECONDARY SUITE AND FINISHED BASEMENT SPACE
ELEV A • 3979 SQ. FT. | ELEV B • 3988 SQ. FT. | ELEV C • 4006 SQ. FT.



The floorplans and elevations shown, dimensions, specifications and architectural detailing are pre-construction plans and may be revised or improved as necessitated by architectural controls and the construction process. All dimensions are approximate. Actual usable floor space may vary from the stated area. House may be reversed and Purchaser agrees to accept same. Specifications subject to change without notice. Number of steps and location may vary at any exterior entrance including walk-up and walk-out basements. Illustrations are Artist's concept. Exterior railings on plans only as required by grade. E. & O. E. 03/24 A38-5

UPPER EAST SIDE
UNIONVILLE

RAVINES (MOD)

ELEV B • 3061 SQ. FT.
ELEV C • 3067 SQ. FT.



38'

FIELDGATEHOMES.COM



FIELDGATEHOMES.COM

UPPER EAST SIDE
UNIONVILLE

RAVINES (MOD)

ELEV A • 3060 SQ. FT.

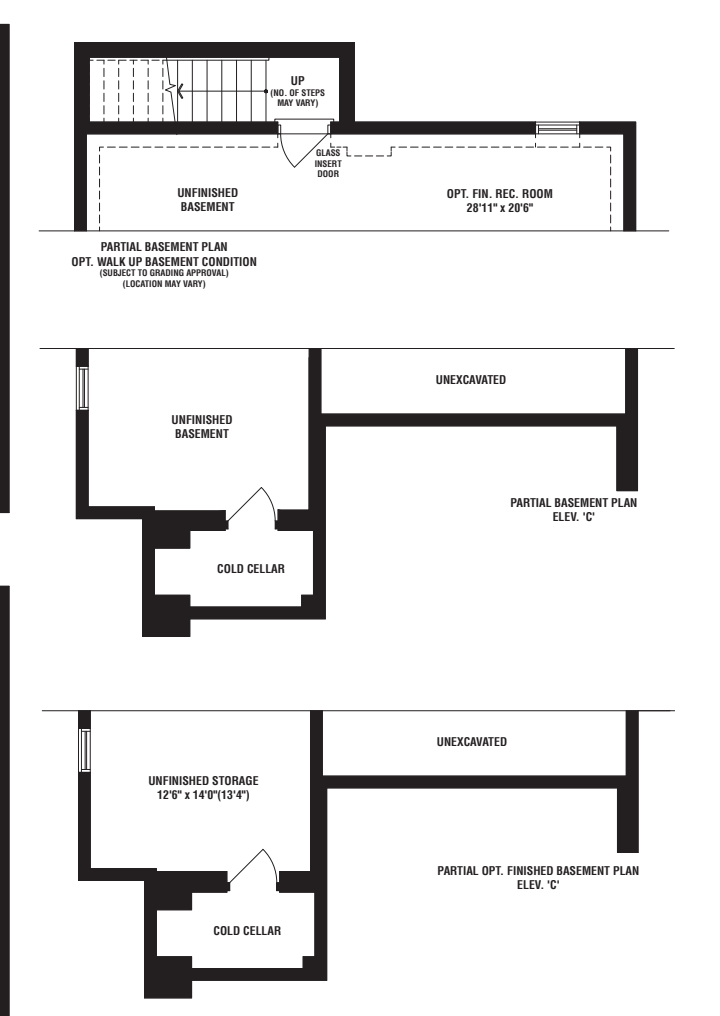
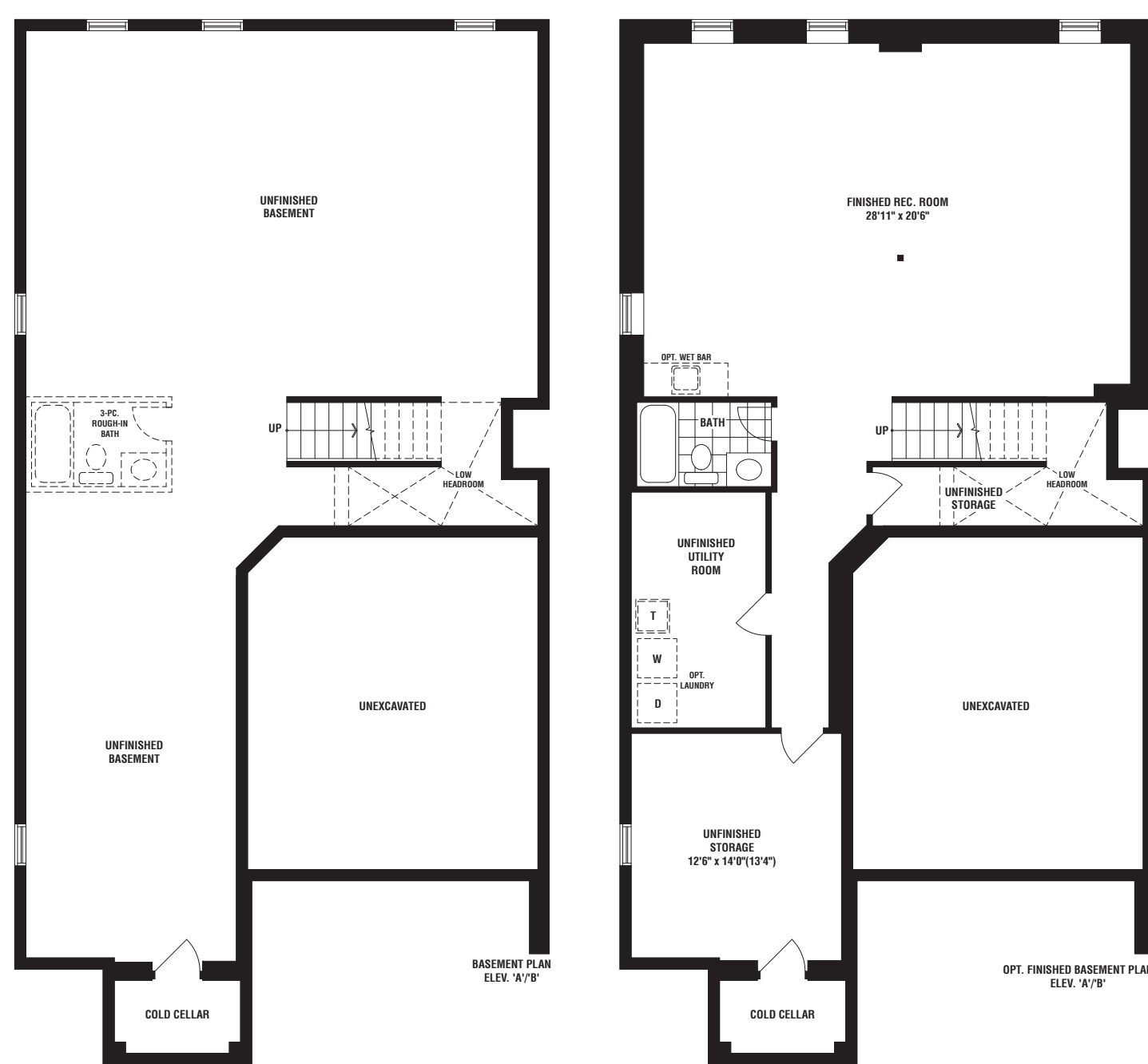
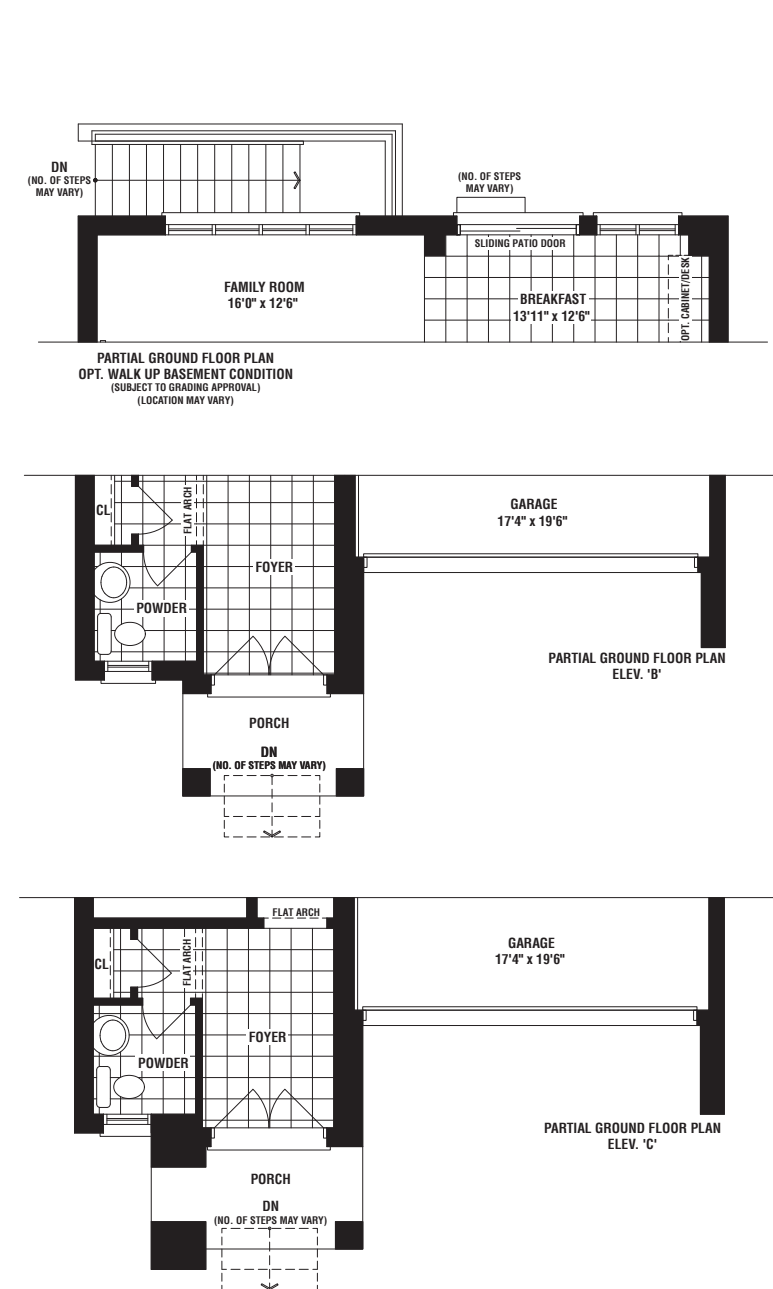
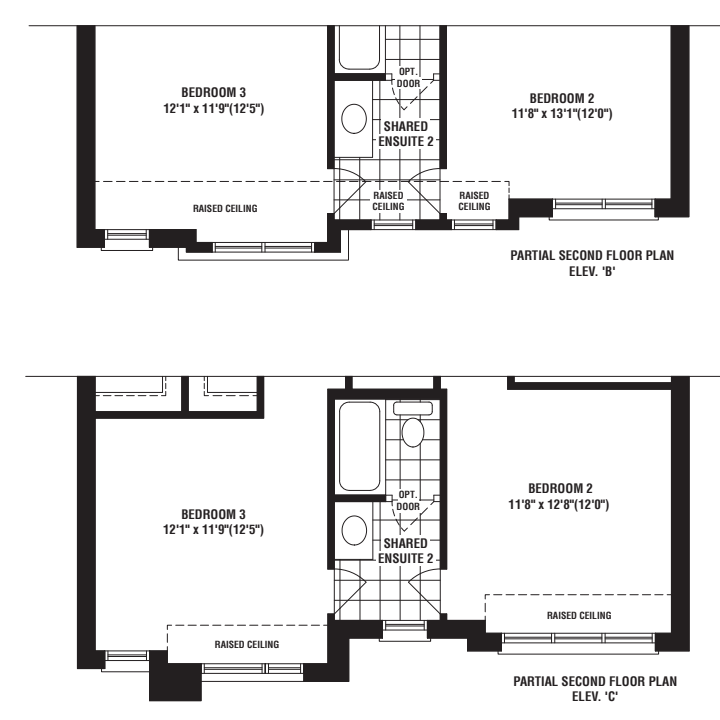
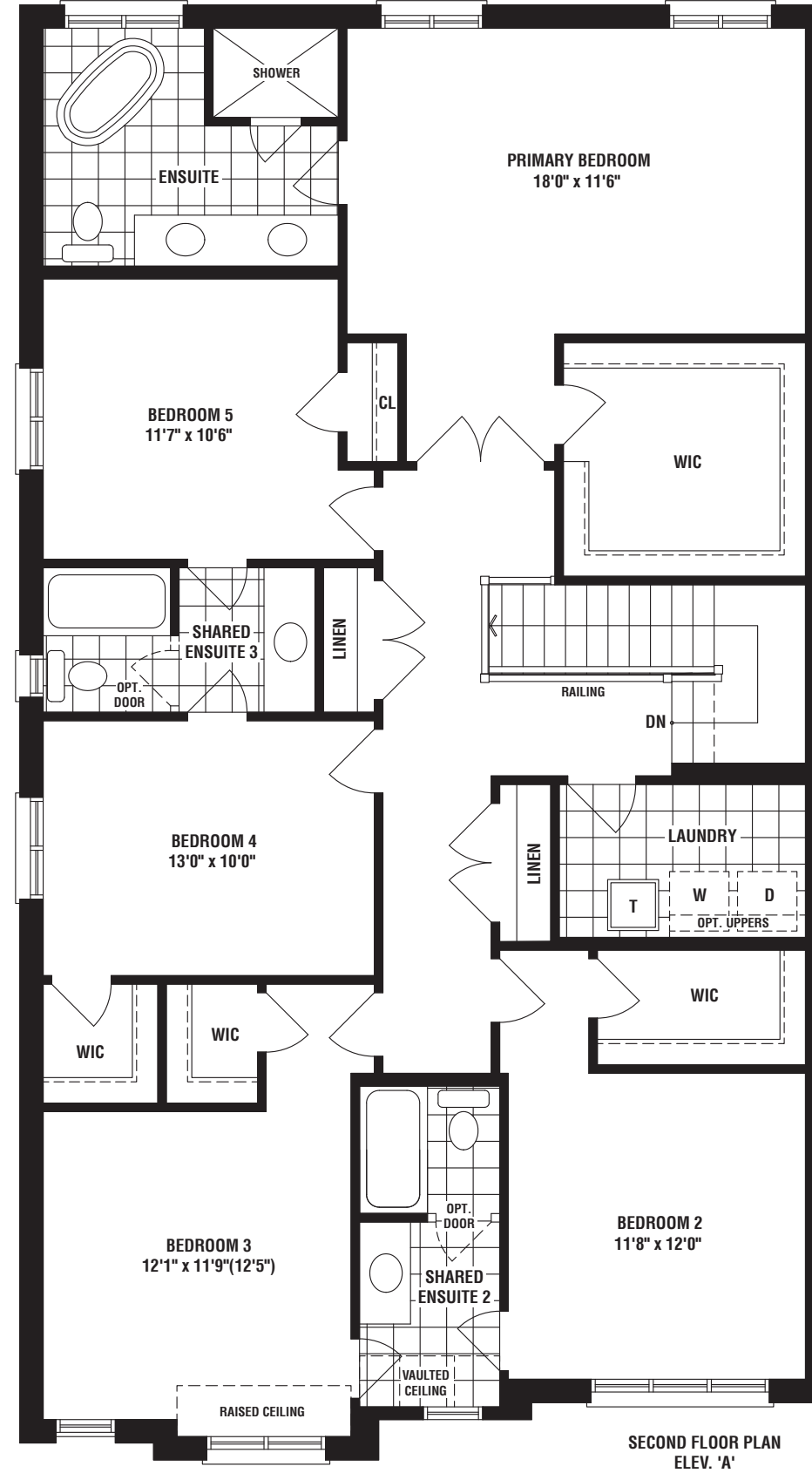


38'

RAVINES (MOD)

ELEV A • 3060 SQ. FT. | ELEV B • 3061 SQ. FT. | ELEV C • 3067 SQ. FT.
(NOT INCLUDING 827 SQ. FT. FINISHED BASEMENT)

38'



The floorplans and elevations shown, dimensions, specifications and architectural detailing are pre-construction plans and may be revised or improved as necessitated by architectural controls and the construction process. All dimensions are approximate. Actual usable floor space may vary from the stated area. House may be reversed and Purchaser agrees to accept same. Specifications subject to change without notice. Number of steps and location may vary at any exterior entrance including walk-up and walk-out basements. Illustrations are Artist's concept. Exterior railings on plans only as required by grade. E. & O. E. 03/24 A38-6 MOD

UPPER EAST SIDE
UNIONVILLE

RAVINES

ELEV B • 3093 SQ. FT.
ELEV C • 3103 SQ. FT.



38'

FIELDGATEHOMES.COM



FIELDGATEHOMES.COM

UPPER EAST SIDE
UNIONVILLE

RAVINES

ELEV A • 3091 SQ. FT.



38'

