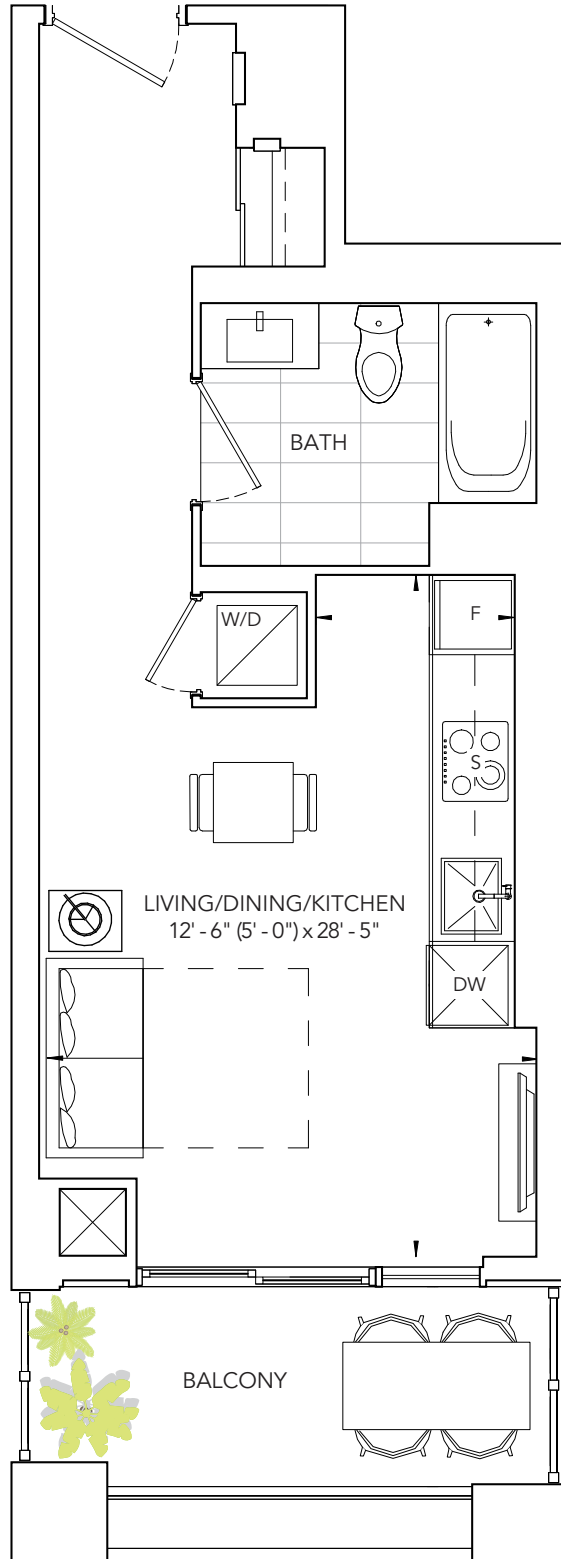


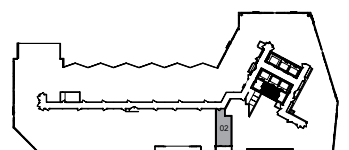
# ENCORE AT BRAVO

## RIO 390

STUDIO, ONE BATH  
 INTERIOR: 390 SQ. FT. | EXTERIOR: 64 SQ. FT.  
 TOTAL: 454 SQ. FT.



\*Prices, sizes and specifications subject to change without notice. E.&O.E. The dimensions shown of this plan are approximate and subject to normal construction variances. Actual useable floor space within the unit may vary from any stated floor areas or dimensions on this plan. Furniture is displayed for illustration purposes only and does not necessarily reflect the electrical plan for the suite. Suites are sold unfurnished. For more information on the method used for calculating the floor area of any unit, reference should be made to Builder Bulletin No. 22 published by Tarion.

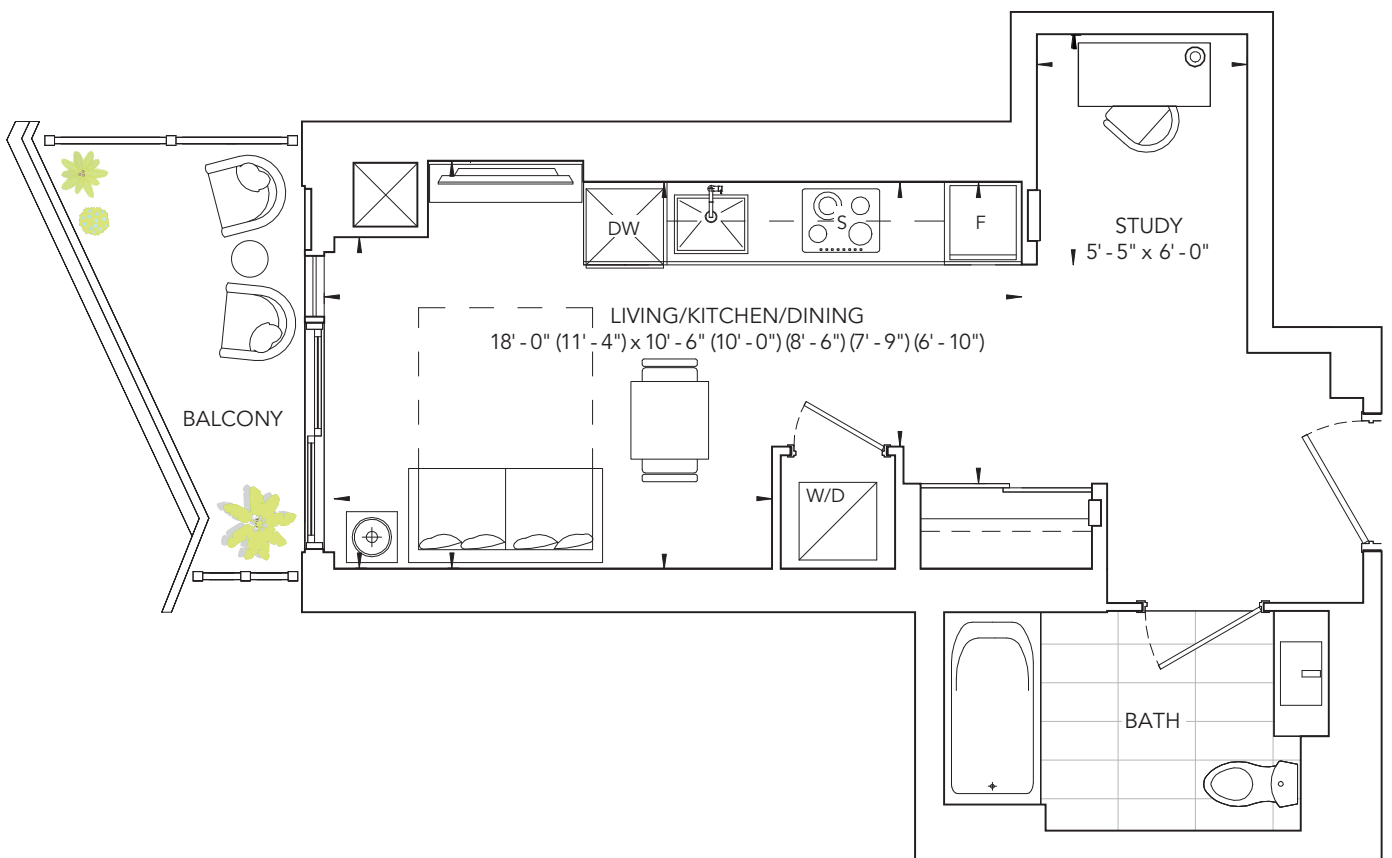


Third Floor

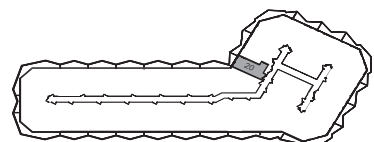
# ENCORE AT BRAVO

# RIO 425

STUDIO, ONE BATH  
 INTERIOR: 425 SQ. FT. | EXTERIOR: 59 SQ. FT.  
 TOTAL: 484 SQ. FT.



\*Prices, sizes and specifications subject to change without notice. E.&O.E. The dimensions shown of this plan are approximate and subject to normal construction variances. Actual useable floor space within the unit may vary from any stated floor areas or dimensions on this plan. Furniture is displayed for illustration purposes only and does not necessarily reflect the electrical plan for the suite. Suites are sold unfurnished. For more information on the method used for calculating the floor area of any unit, reference should be made to Builder Bulletin No. 22 published by Tarion.

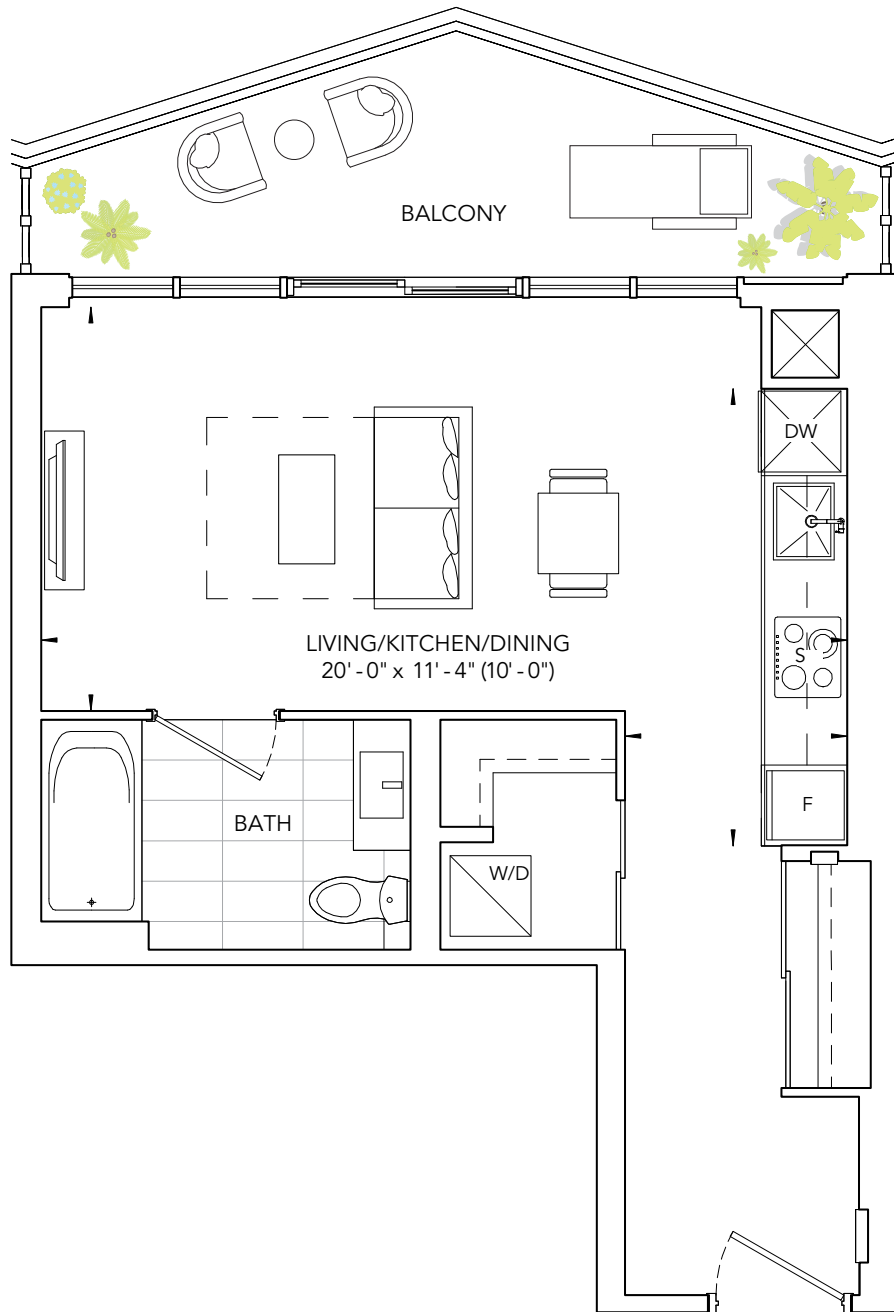


Sixth and Seventh Floor

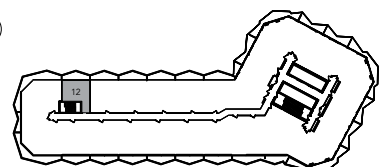
# ENCORE AT BRAVO

# RIO 430

STUDIO, ONE BATH  
 INTERIOR: 430 SQ. FT. | EXTERIOR: 98 SQ. FT.  
 TOTAL: 528 SQ. FT.



\*Prices, sizes and specifications subject to change without notice. E.&O.E. The dimensions shown of this plan are approximate and subject to normal construction variances. Actual useable floor space within the unit may vary from any stated floor areas or dimensions on this plan. Furniture is displayed for illustration purposes only and does not necessarily reflect the electrical plan for the suite. Suites are sold unfurnished. For more information on the method used for calculating the floor area of any unit, reference should be made to Builder Bulletin No. 22 published by Tarion.



Sixth and Seventh Floor

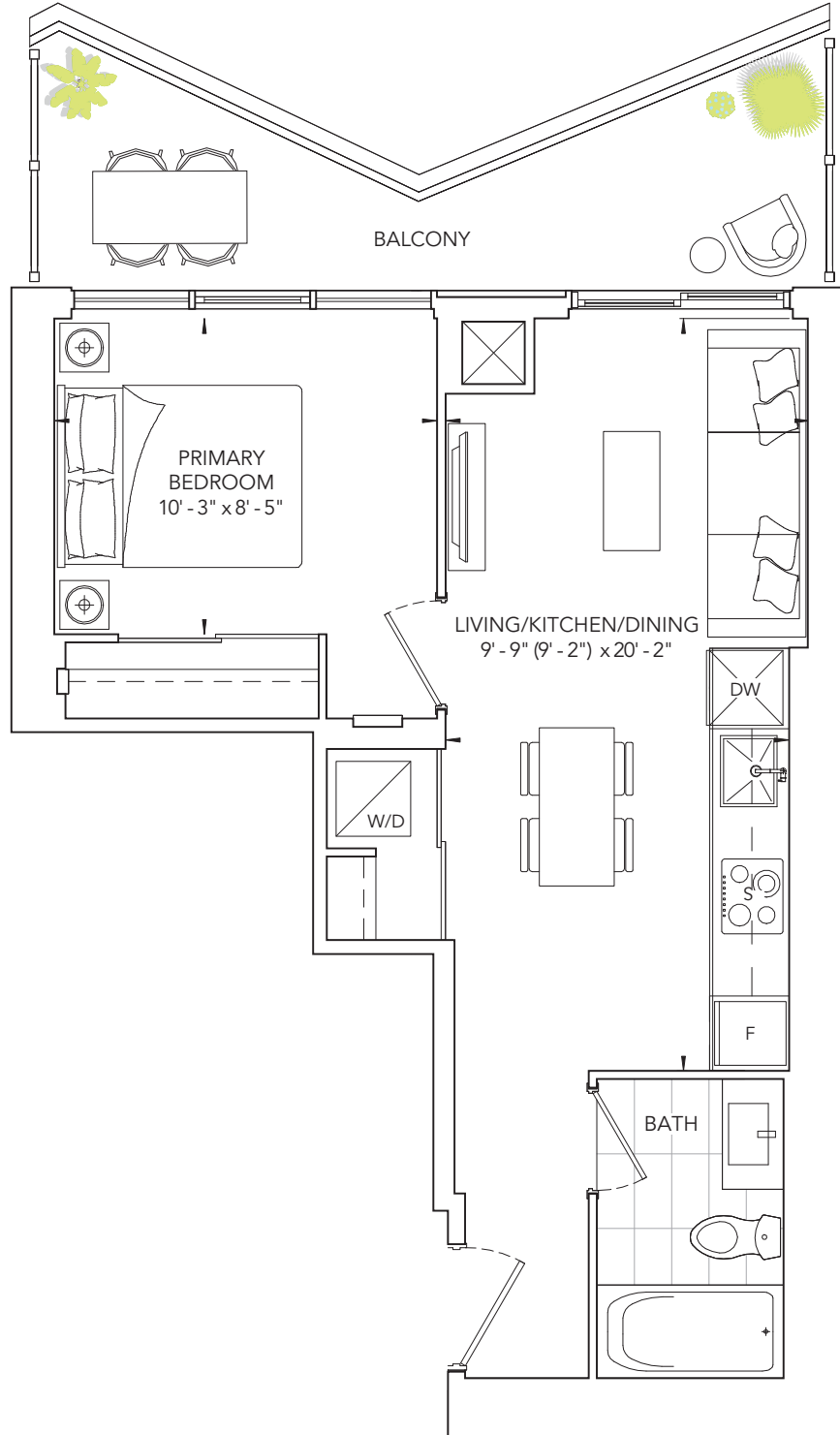
# ENCORE AT BRAVO

# NEW ORLEANS 470

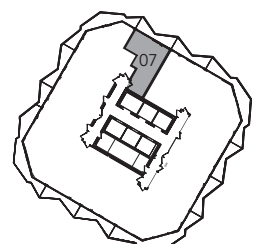
ONE BEDROOM, ONE BATH

INTERIOR: 470 SQ. FT. | EXTERIOR: 107 SQ. FT.

TOTAL: 577 SQ. FT.



\*Prices, sizes and specifications subject to change without notice. E.&O.E. The dimensions shown of this plan are approximate and subject to normal construction variances. Actual useable floor space within the unit may vary from any stated floor areas or dimensions on this plan. Furniture is displayed for illustration purposes only and does not necessarily reflect the electrical plan for the suite. Suites are sold unfurnished. For more information on the method used for calculating the floor area of any unit, reference should be made to Builder Bulletin No. 22 published by Tarion.

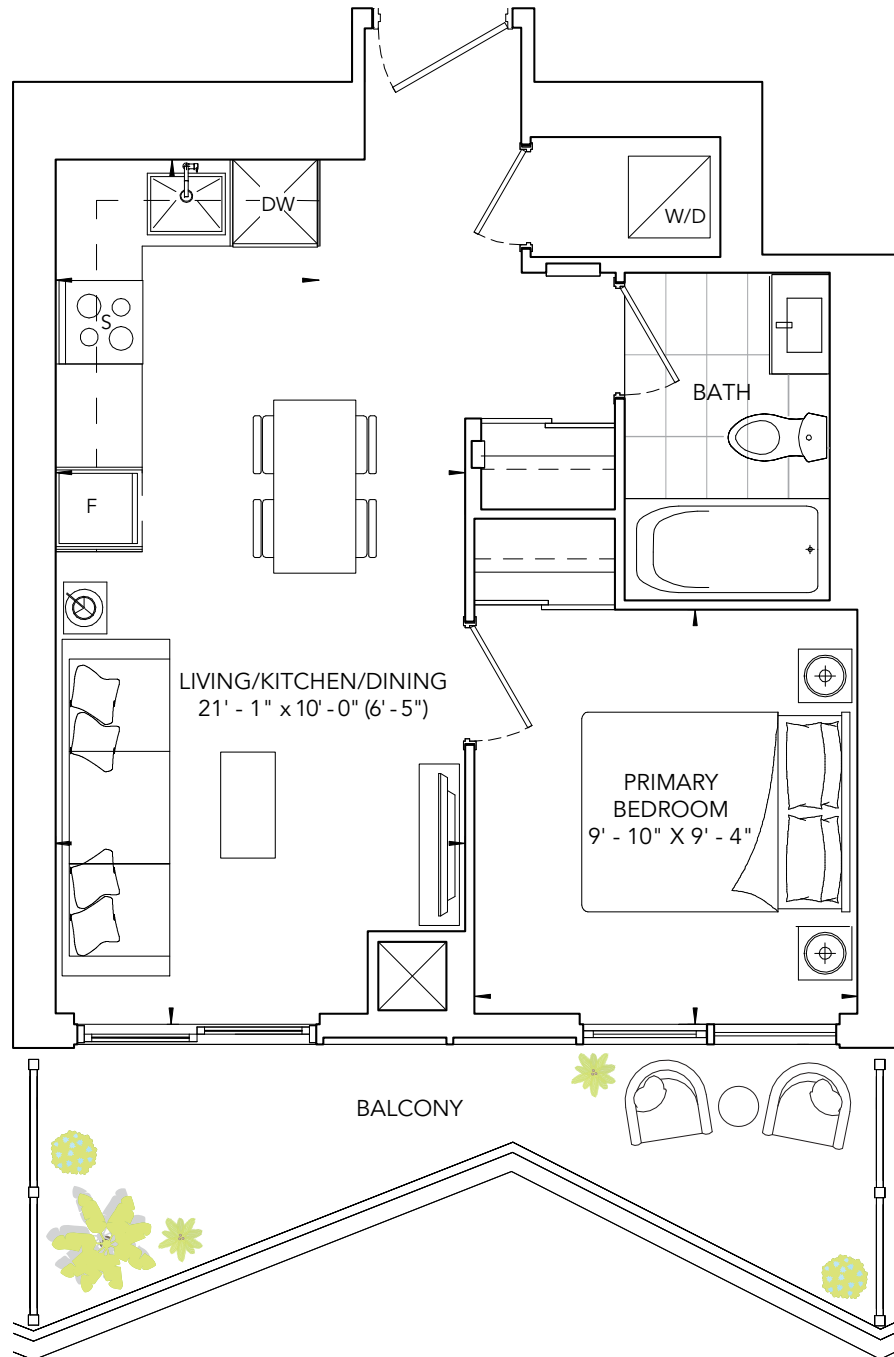


Typical Floor

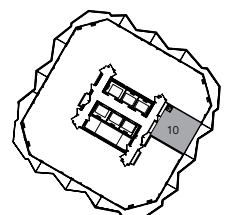
# ENCORE AT BRAVO

# NEW ORLEANS 480

ONE BEDROOM, ONE BATH  
 INTERIOR: 480 SQ. FT. | EXTERIOR: 108 SQ. FT.  
 TOTAL: 588 SQ. FT.



\*Prices, sizes and specifications subject to change without notice. E.&O.E. The dimensions shown of this plan are approximate and subject to normal construction variances. Actual useable floor space within the unit may vary from any stated floor areas or dimensions on this plan. Furniture is displayed for illustration purposes only and does not necessarily reflect the electrical plan for the suite. Suites are sold unfurnished. For more information on the method used for calculating the floor area of any unit, reference should be made to Builder Bulletin No. 22 published by Tarion.

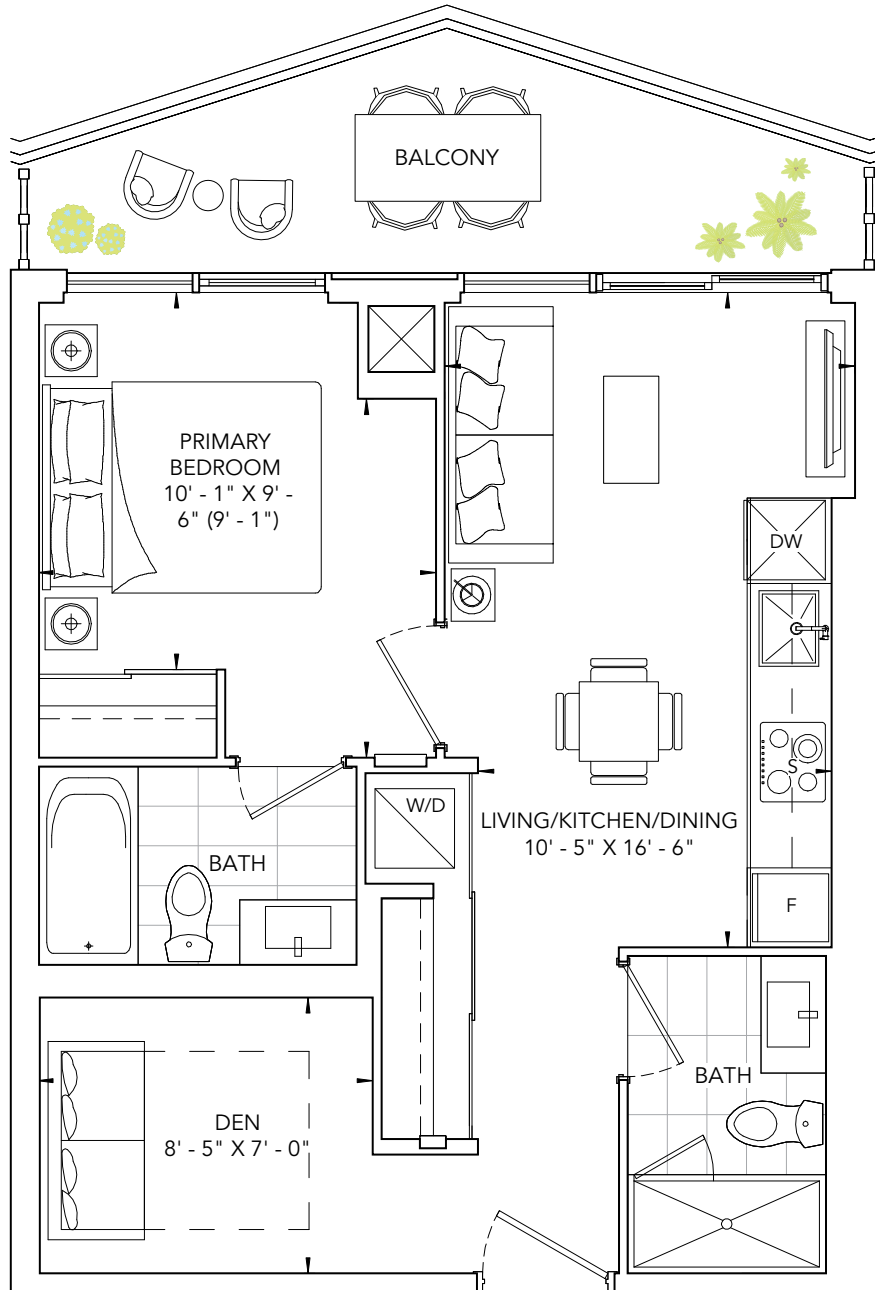


Typical Floor

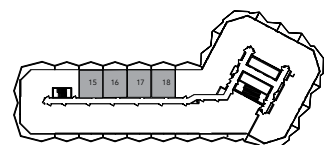
# ENCORE AT BRAVO

# BANGALORE 548

ONE BEDROOM + DEN, TWO BATH  
 INTERIOR: 548 SQ. FT. | EXTERIOR: 95 SQ. FT.  
 TOTAL: 643 SQ. FT.



\*Prices, sizes and specifications subject to change without notice. E.&O.E. The dimensions shown of this plan are approximate and subject to normal construction variances. Actual useable floor space within the unit may vary from any stated floor areas or dimensions on this plan. Furniture is displayed for illustration purposes only and does not necessarily reflect the electrical plan for the suite. Suites are sold unfurnished. For more information on the method used for calculating the floor area of any unit, reference should be made to Builder Bulletin No. 22 published by Tarion.

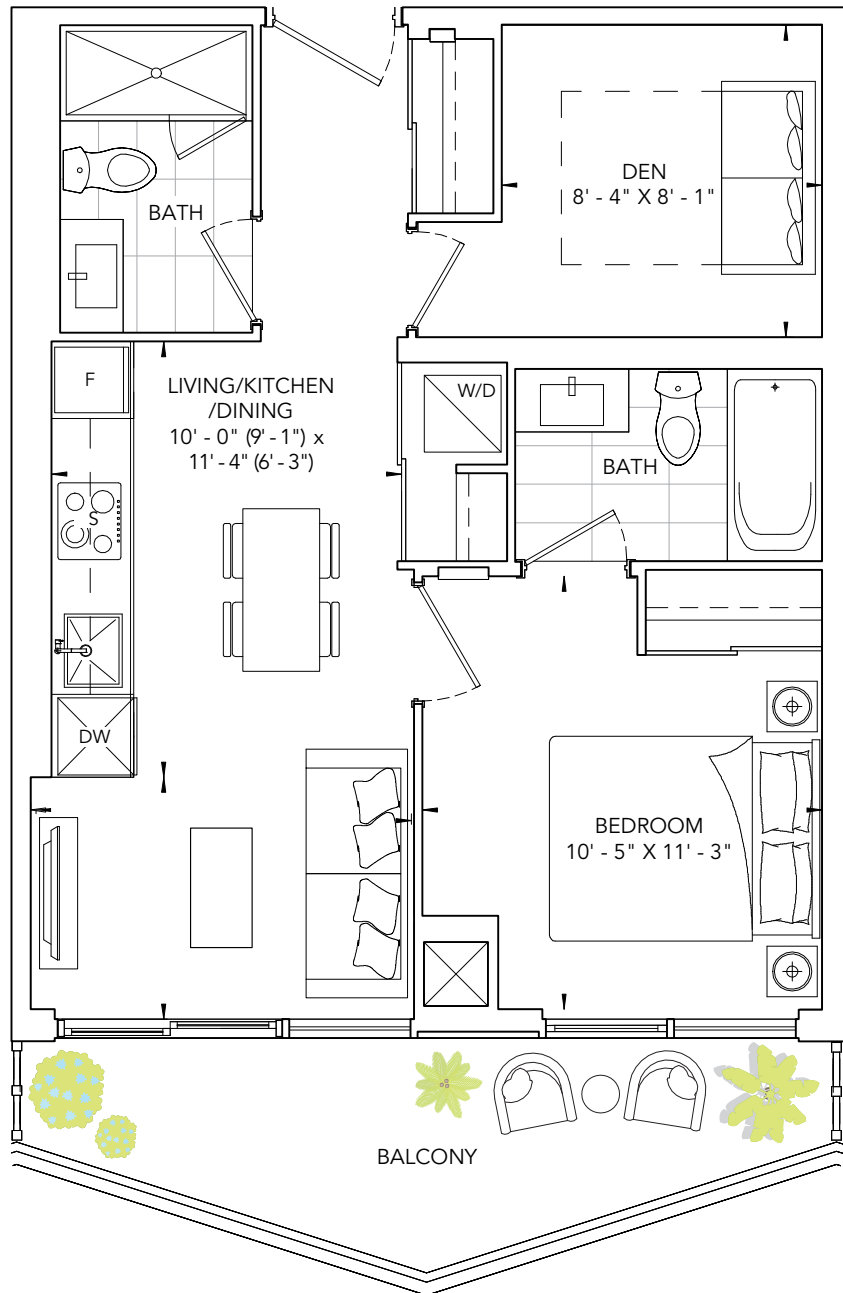


Sixth and Seventh Floor

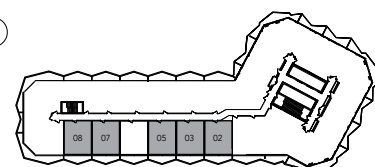
# ENCORE AT BRAVO

# BANGALORE 572

ONE BEDROOM + DEN, TWO BATH  
 INTERIOR: 572 SQ. FT. | EXTERIOR: 103 SQ. FT.  
 TOTAL: 675 SQ. FT.



\*Prices, sizes and specifications subject to change without notice. E.&O.E. The dimensions shown of this plan are approximate and subject to normal construction variances. Actual useable floor space within the unit may vary from any stated floor areas or dimensions on this plan. Furniture is displayed for illustration purposes only and does not necessarily reflect the electrical plan for the suite. Suites are sold unfurnished. For more information on the method used for calculating the floor area of any unit, reference should be made to Builder Bulletin No. 22 published by Tarion.

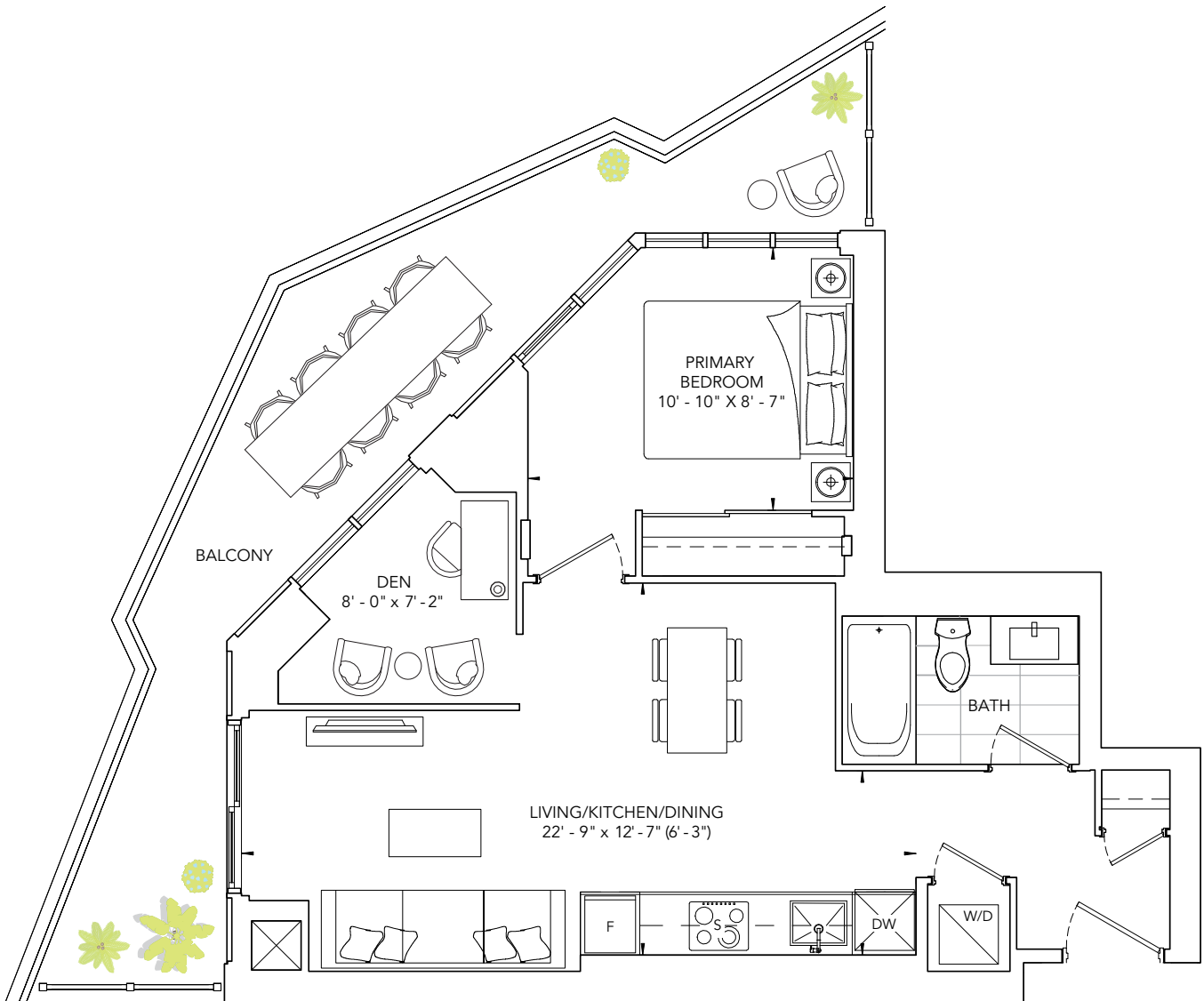


Sixth and Seventh Floor

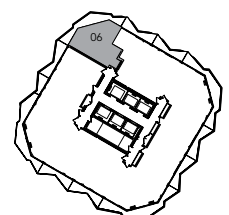
# ENCORE AT BRAVO

# KYOTO 585

ONE BEDROOM + DEN, ONE BATH  
 INTERIOR: 585 SQ. FT. | EXTERIOR: 203 SQ. FT.  
 TOTAL: 788 SQ. FT.



\*Prices, sizes and specifications subject to change without notice. E.&O.E. The dimensions shown of this plan are approximate and subject to normal construction variances. Actual useable floor space within the unit may vary from any stated floor areas or dimensions on this plan. Furniture is displayed for illustration purposes only and does not necessarily reflect the electrical plan for the suite. Suites are sold unfurnished. For more information on the method used for calculating the floor area of any unit, reference should be made to Builder Bulletin No. 22 published by Tarion.



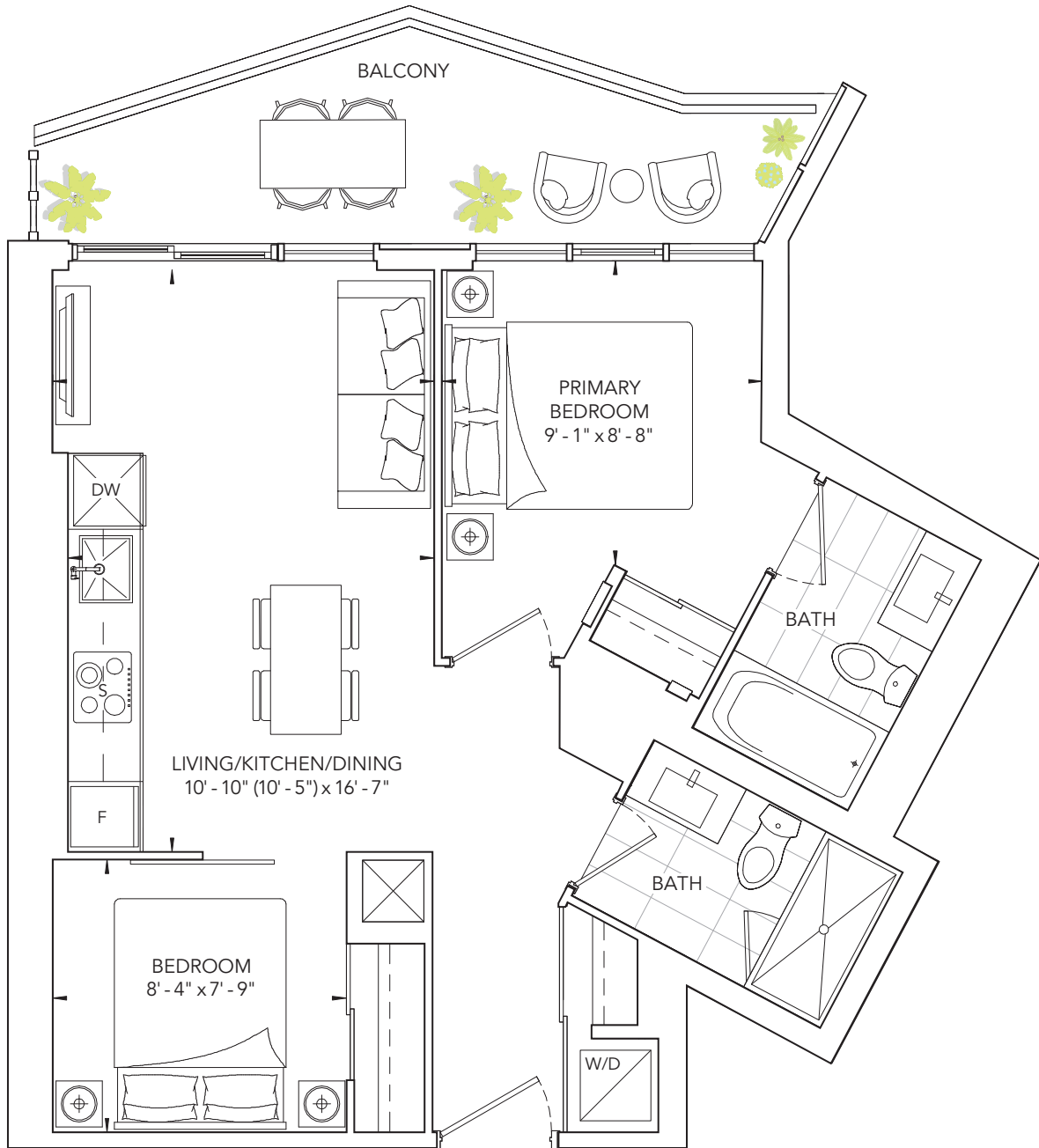
Typical Floor



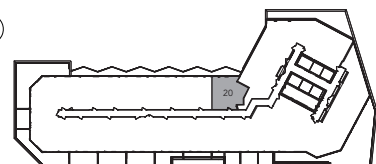
# ENCORE AT BRAVO

# VALENCIA 614

TWO BEDROOM, TWO BATH  
 INTERIOR: 614 SQ. FT. | EXTERIOR: 94 SQ. FT.  
 TOTAL: 708 SQ. FT.



\*Prices, sizes and specifications subject to change without notice. E.&O.E. The dimensions shown of this plan are approximate and subject to normal construction variances. Actual useable floor space within the unit may vary from any stated floor areas or dimensions on this plan. Furniture is displayed for illustration purposes only and does not necessarily reflect the electrical plan for the suite. Suites are sold unfurnished. For more information on the method used for calculating the floor area of any unit, reference should be made to Builder Bulletin No. 22 published by Tarion.

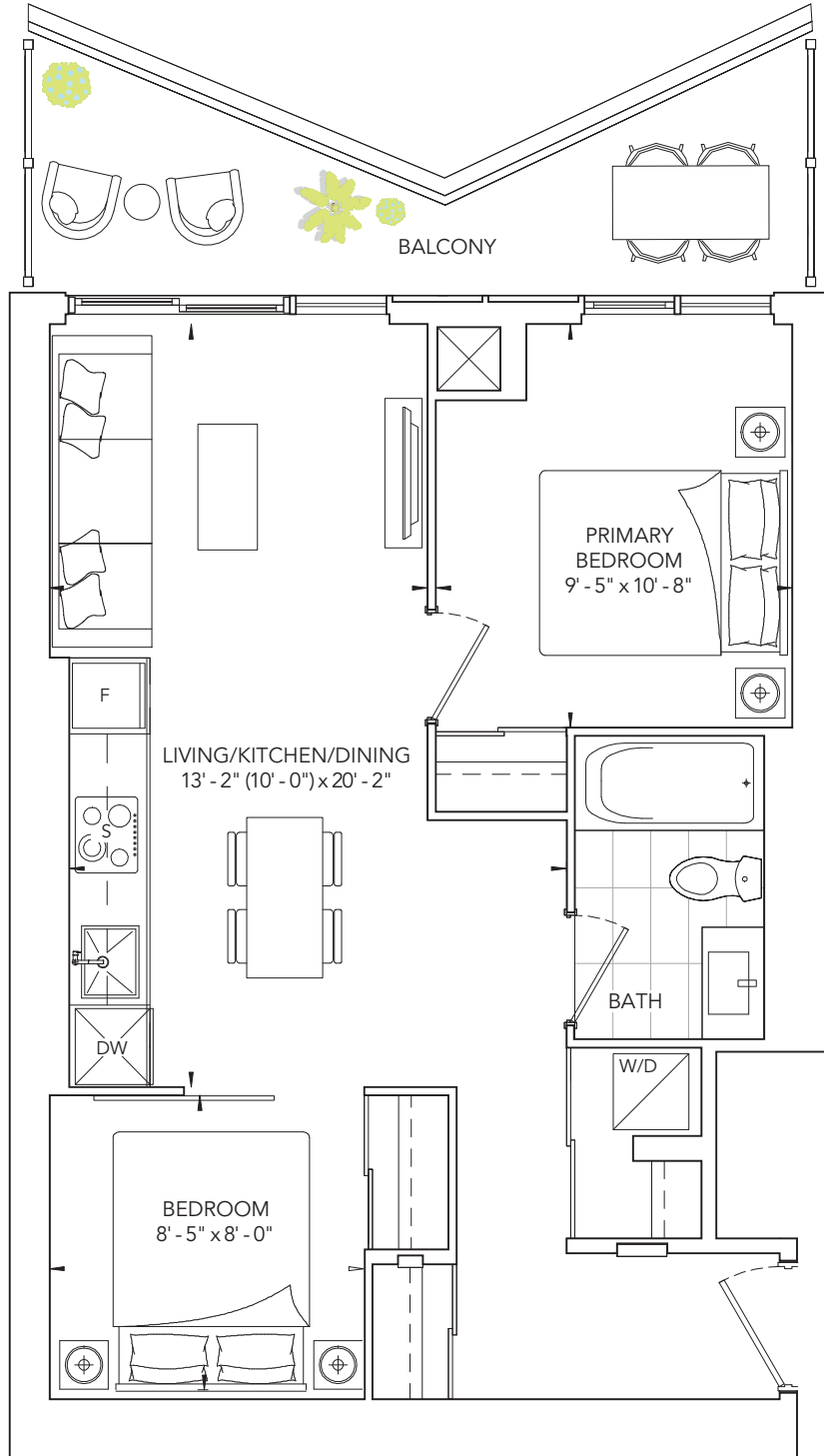


Fifth Floor

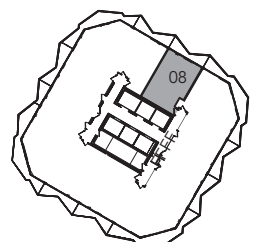
# ENCORE AT BRAVO

# VALENCIA 622

TWO BEDROOM, ONE BATH  
 INTERIOR: 622 SQ. FT. | EXTERIOR: 102 SQ. FT.  
 TOTAL: 724 SQ. FT.



\*Prices, sizes and specifications subject to change without notice. E.&O.E. The dimensions shown of this plan are approximate and subject to normal construction variances. Actual useable floor space within the unit may vary from any stated floor areas or dimensions on this plan. Furniture is displayed for illustration purposes only and does not necessarily reflect the electrical plan for the suite. Suites are sold unfurnished. For more information on the method used for calculating the floor area of any unit, reference should be made to Builder Bulletin No. 22 published by Tarion.

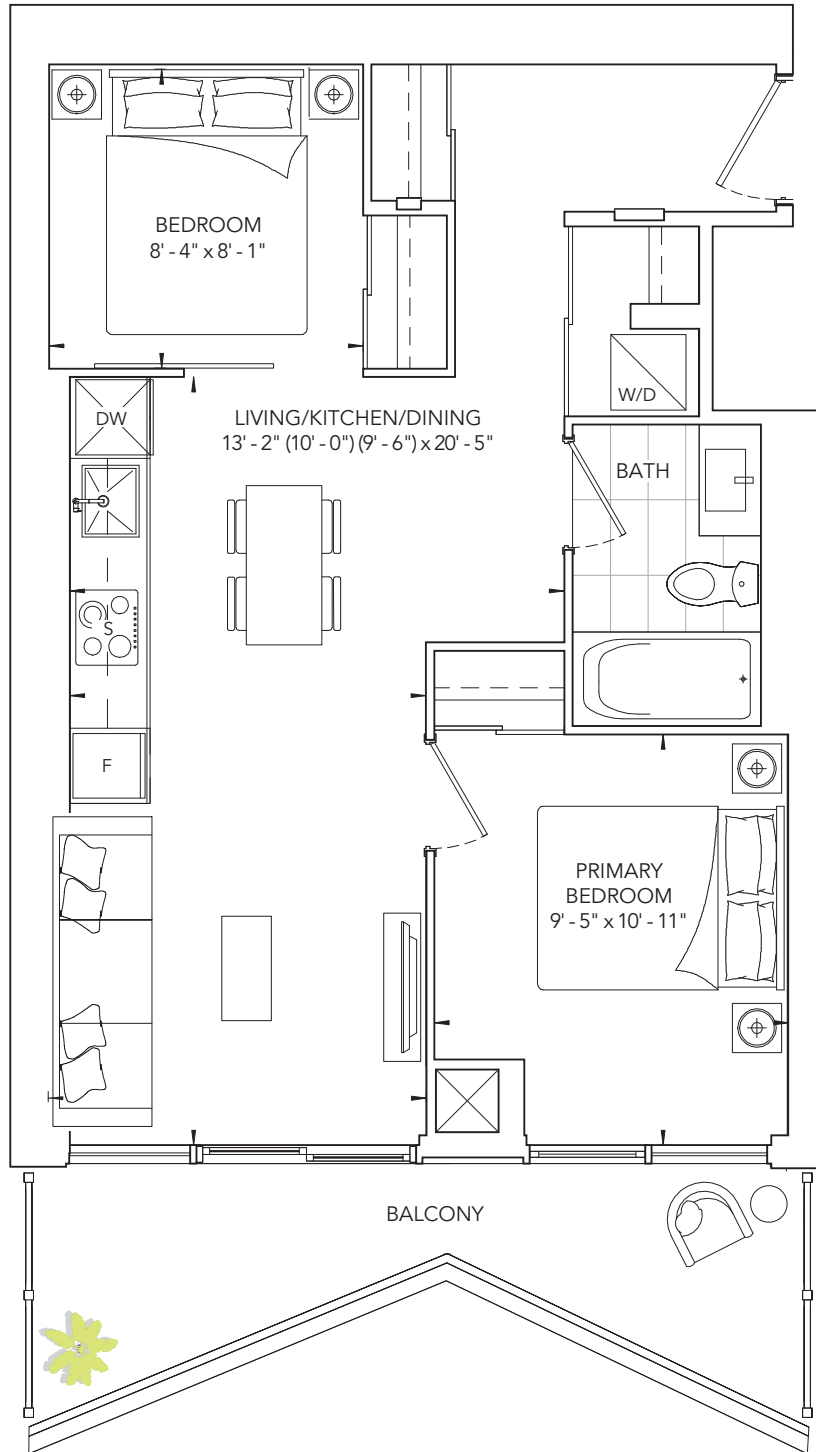


Typical Floor

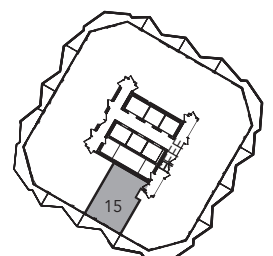
# ENCORE AT BRAVO

# VALENCIA 624

TWO BEDROOM, ONE BATH  
 INTERIOR: 624 SQ. FT. | EXTERIOR: 102 SQ. FT.  
 TOTAL: 726 SQ. FT.



\*Prices, sizes and specifications subject to change without notice. E.&O.E. The dimensions shown of this plan are approximate and subject to normal construction variances. Actual useable floor space within the unit may vary from any stated floor areas or dimensions on this plan. Furniture is displayed for illustration purposes only and does not necessarily reflect the electrical plan for the suite. Suites are sold unfurnished. For more information on the method used for calculating the floor area of any unit, reference should be made to Builder Bulletin No. 22 published by Tarion.

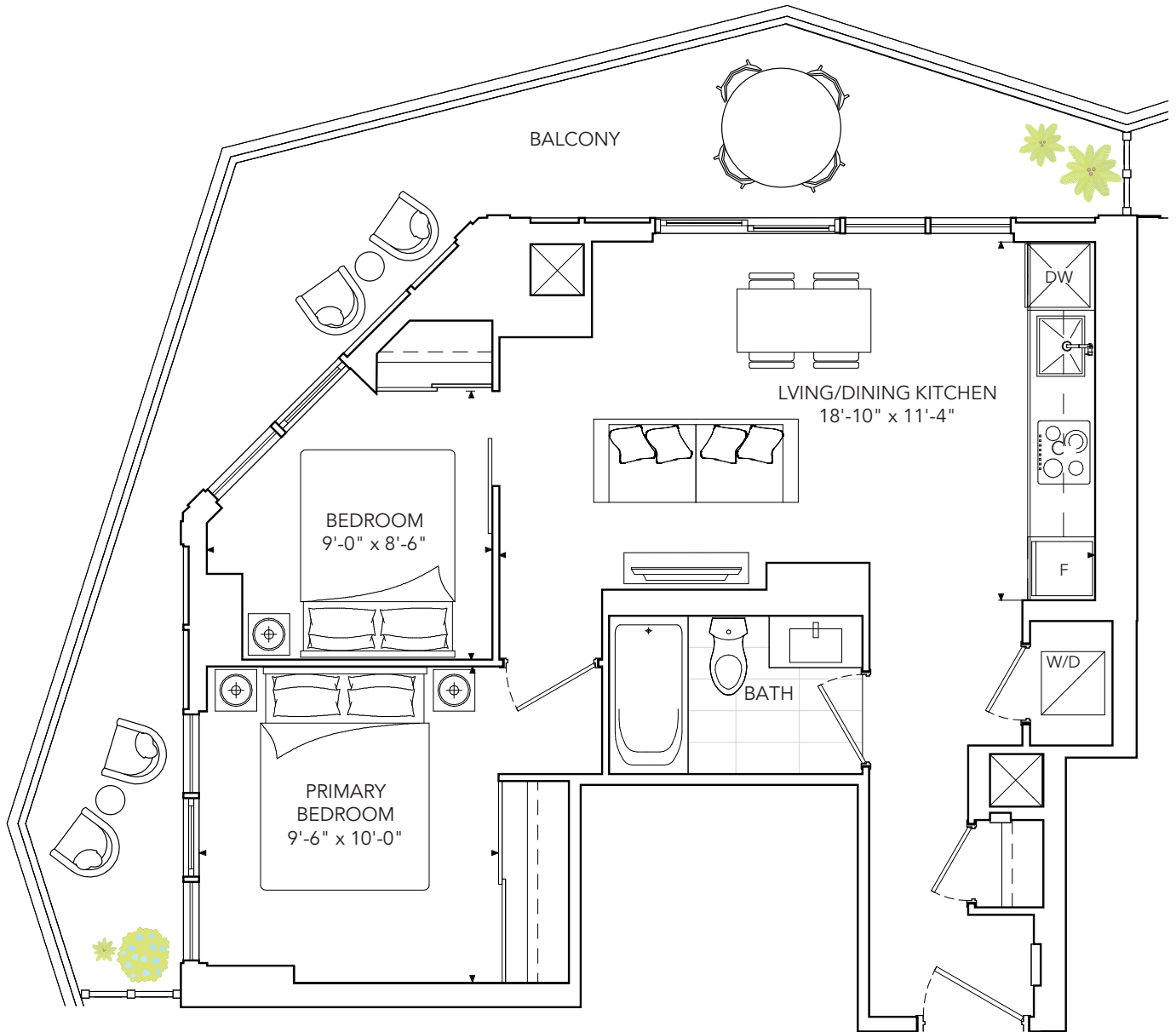


Typical Floor

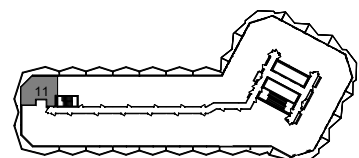
# ENCORE AT BRAVO

# VALENCIA 642

TWO BEDROOM, ONE BATH  
 INTERIOR: 642 SQ. FT. | EXTERIOR: 214  
 SQ. FT. TOTAL: 856 SQ. FT.



\*Prices, sizes and specifications subject to change without notice. E.&O.E. The dimensions shown of this plan are approximate and subject to normal construction variances. Actual useable floor space within the unit may vary from any stated floor areas or dimensions on this plan. Furniture is displayed for illustration purposes only and does not necessarily reflect the electrical plan for the suite. Suites are sold unfurnished. For more information on the method used for calculating the floor area of any unit, reference should be made to Builder Bulletin No. 22 published by Tarion.

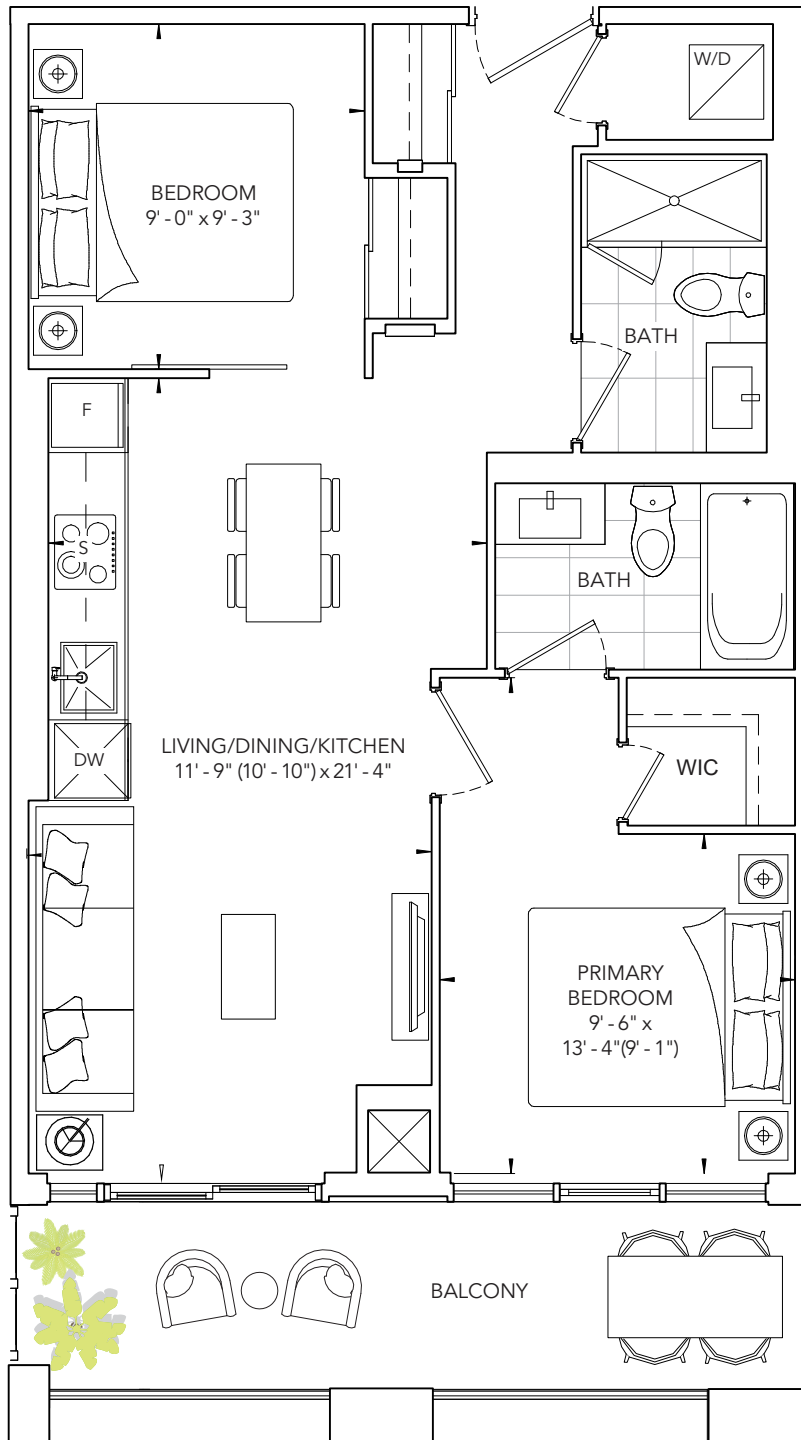


Sixth and Seventh Floor

# ENCORE AT BRAVO

# VALENCIA 685

TWO BEDROOM, TWO BATH  
 INTERIOR: 685 SQ. FT. | EXTERIOR: 117 SQ. FT.  
 TOTAL: 802 SQ. FT.



\*Prices, sizes and specifications subject to change without notice. E.&O.E. The dimensions shown of this plan are approximate and subject to normal construction variances. Actual useable floor space within the unit may vary from any stated floor areas or dimensions on this plan. Furniture is displayed for illustration purposes only and does not necessarily reflect the electrical plan for the suite. Suites are sold unfurnished. For more information on the method used for calculating the floor area of any unit, reference should be made to Builder Bulletin No. 22 published by Tarion.

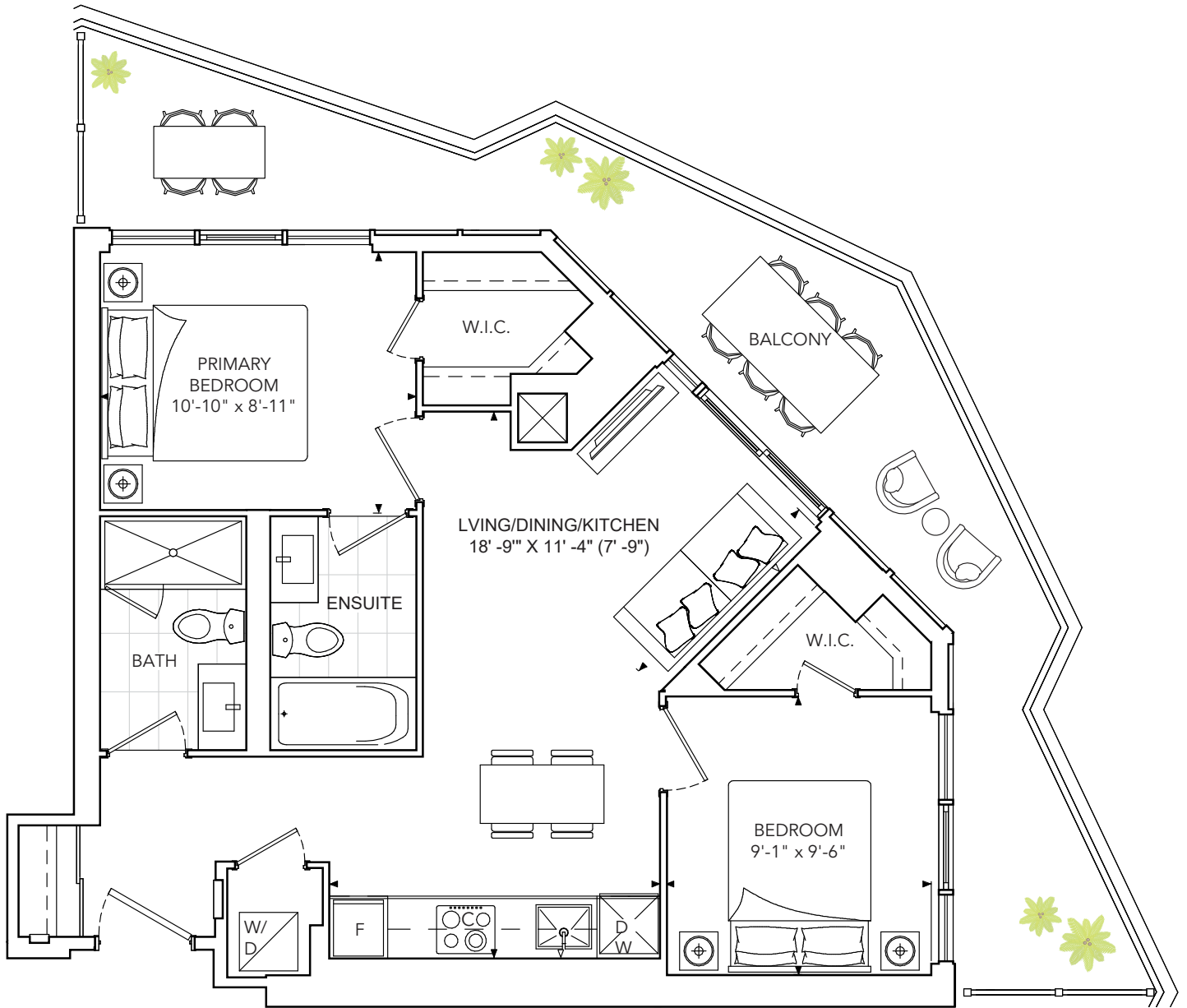


Third Floor

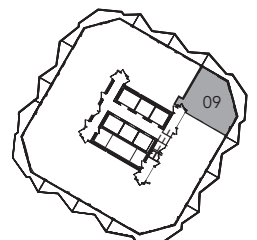
# ENCORE AT BRAVO

# VALENCIA 691

TWO BEDROOM, TWO BATH  
 INTERIOR: 691 SQ. FT. | EXTERIOR: 249 SQ. FT.  
 TOTAL: 940 SQ. FT.



\*Prices, sizes and specifications subject to change without notice. E.&O.E. The dimensions shown of this plan are approximate and subject to normal construction variances. Actual useable floor space within the unit may vary from any stated floor areas or dimensions on this plan. Furniture is displayed for illustration purposes only and does not necessarily reflect the electrical plan for the suite. Suites are sold unfurnished. For more information on the method used for calculating the floor area of any unit, reference should be made to Builder Bulletin No. 22 published by Tarion.

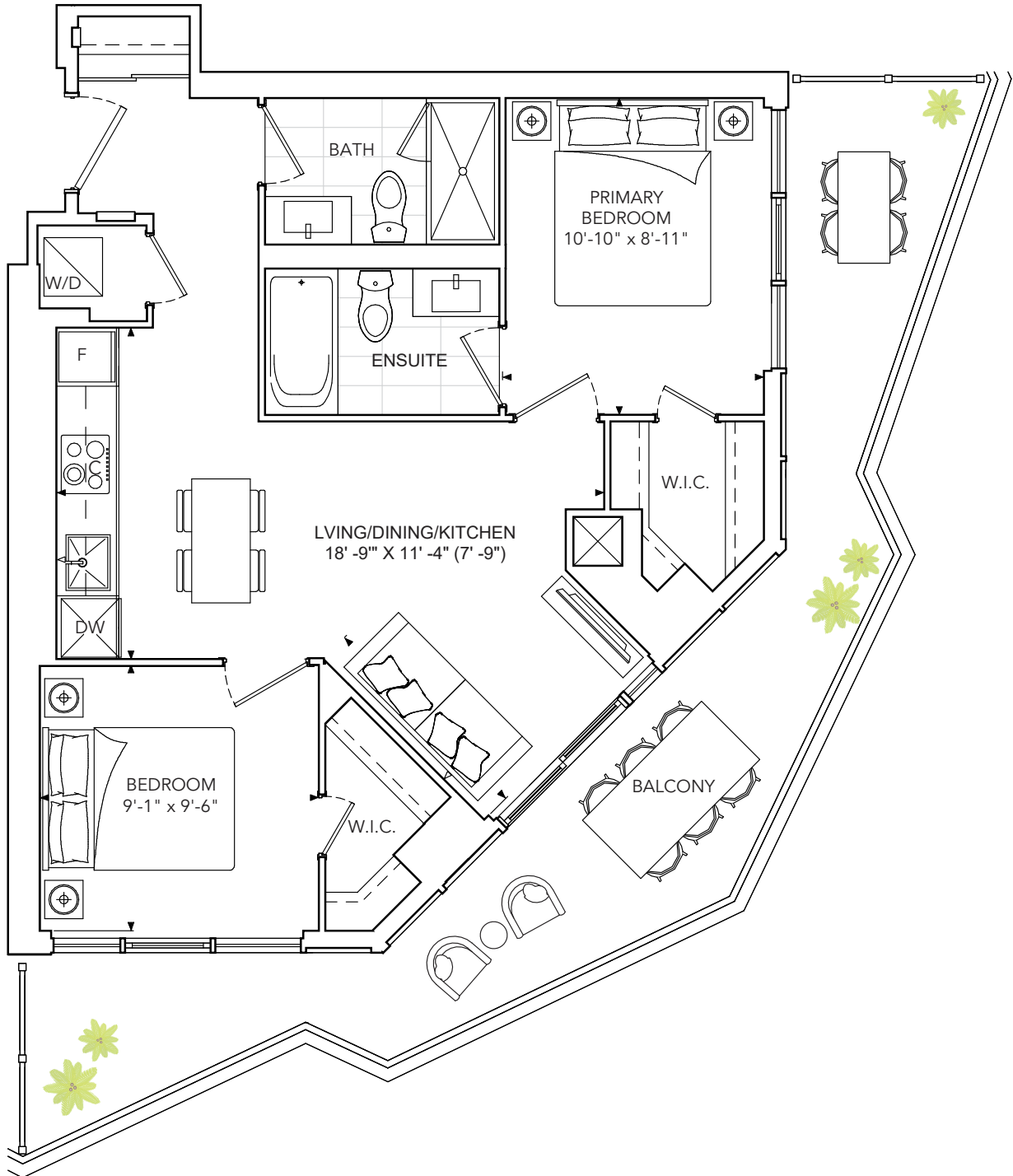


Typical Floor

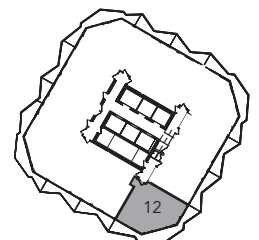
# ENCORE AT BRAVO

# VALENCIA 691R

TWO BEDROOM, TWO BATH  
 INTERIOR: 691 SQ. FT. | EXTERIOR: 249 SQ. FT.  
 TOTAL: 940 SQ. FT.



\*Prices, sizes and specifications subject to change without notice. E.&O.E. The dimensions shown of this plan are approximate and subject to normal construction variances. Actual useable floor space within the unit may vary from any stated floor areas or dimensions on this plan. Furniture is displayed for illustration purposes only and does not necessarily reflect the electrical plan for the suite. Suites are sold unfurnished. For more information on the method used for calculating the floor area of any unit, reference should be made to Builder Bulletin No. 22 published by Tarion.

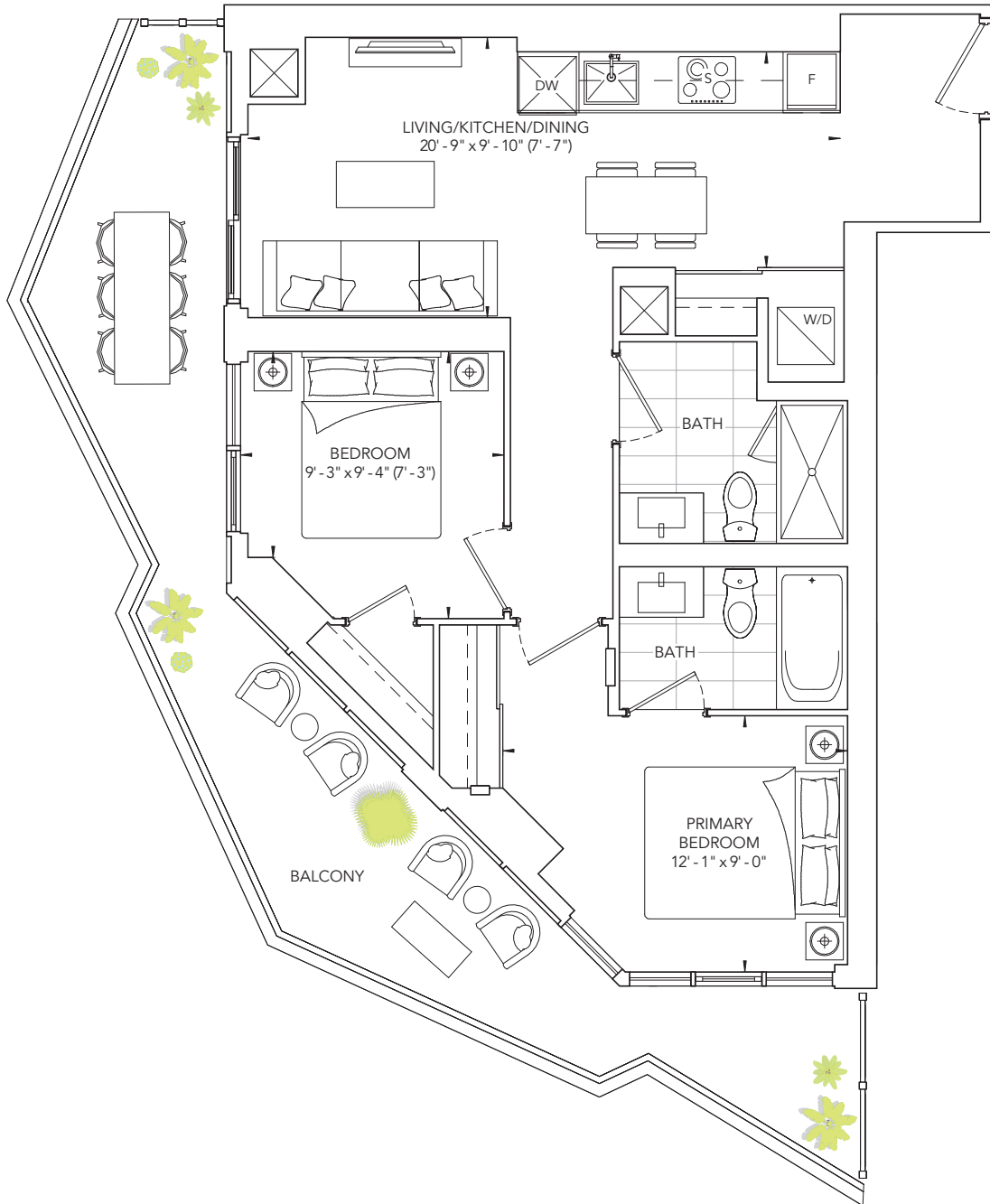


Typical Floor

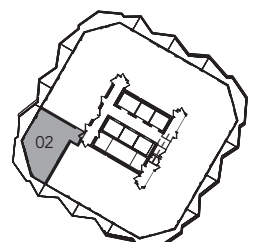
# ENCORE AT BRAVO

# VALENCIA 698

TWO BEDROOM, TWO BATH  
 INTERIOR: 698 SQ. FT. | EXTERIOR: 243 SQ.FT.  
 TOTAL: 941 SQ. FT.



\*Prices, sizes and specifications subject to change without notice. E.&O.E. The dimensions shown of this plan are approximate and subject to normal construction variances. Actual useable floor space within the unit may vary from any stated floor areas or dimensions on this plan. Furniture is displayed for illustration purposes only and does not necessarily reflect the electrical plan for the suite. Suites are sold unfurnished. For more information on the method used for calculating the floor area of any unit, reference should be made to Builder Bulletin No. 22 published by Tarion.



Typical Floor